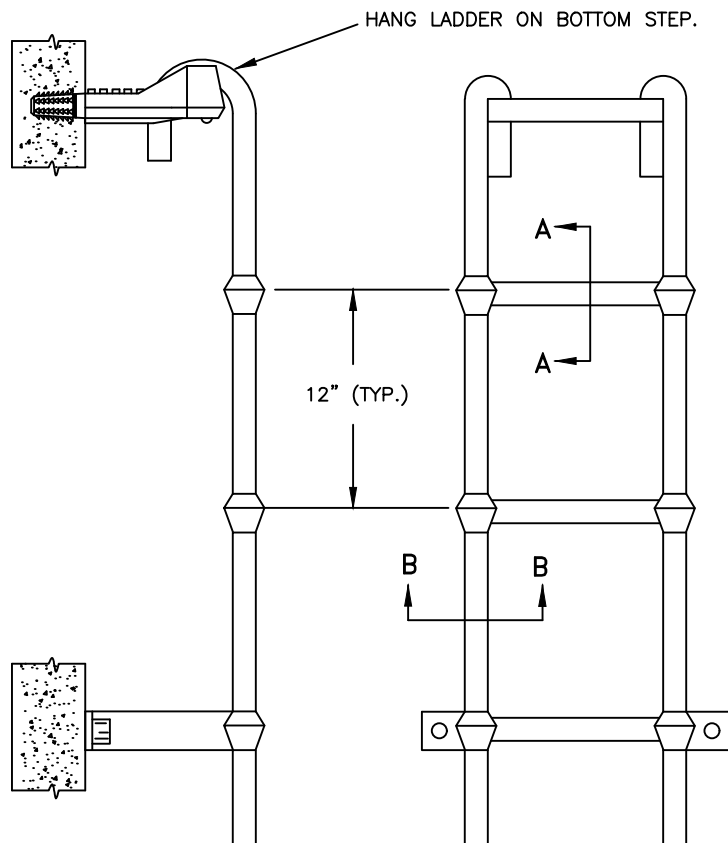
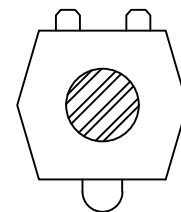


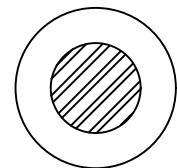
STEP



HANGING LADDER



SECTION A-A



SECTION B-B

NOTES :

1. STEPS TO BE LANE INTERNATIONAL #P-14938 OR DISTRICT APPROVED EQUAL.
2. FASTEN LADDER TO MH STRUCTURE WITH STAINLESS STEEL LAG SCREWS INTO LEAD ANCHORS, OR SET LADDER BASE INTO MH SHELF PRIOR TO CURING.
3. IF REQUIRED IN NECK/ADJUSTING RINGS, HAND HOLD TO BE LANE INTERNATIONAL #HAND HOLD.

**MANHOLE STEPS AND LADDER**

NOT TO SCALE

**DETAIL APPROVALS**  
**EDITOR** TMC  
**MANAGER** SJD

**NORTHSHORE UTILITY DISTRICT**  
 2024 STANDARD SEWER DETAILS

**6**

LAST UPDATED  
 FEBRUARY 2022