

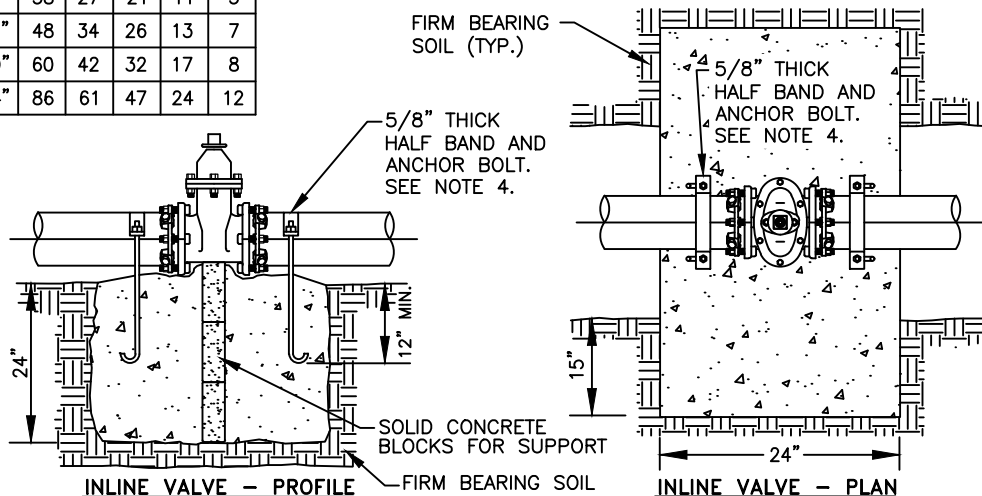
THRUST BLOCK SIZING FOR 250 PSI PRESSURE

MIN. BEARING AREA AGAINST UNDISTURBED
SOIL IN SQUARE FEET.

PIPE SIZE	(A)	(B)	(C)	(D)	(E)
4"	3	2	2	1	1
6"	6	4	3	2	1
8"	10	7	5	3	2
10"	15	11	8	4	2
12"	22	15	12	6	3
14"	29	21	16	8	4
16"	38	27	21	11	5
18"	48	34	26	13	7
20"	60	42	32	17	8
24"	86	61	47	24	12

GENERAL NOTES:

1. CONCRETE THRUST BLOCK AREA BASED UPON A SOIL BEARING LOAD OF 2,000 LBS. PER SQ. FT.
2. AREAS MUST BE ADJUSTED FOR OTHER SIZE PIPE, PRESSURES AND SOIL CONDITIONS.
3. CONCRETE BLOCKING SHALL BE CAST-IN-PLACE AGAINST FIRM, UNYIELDING, AND UNDISTURBED MATERIAL AND HAVE MINIMUM OF 1/2 SQUARE FOOT CONTACT BEARING AGAINST THE FITTING.
4. BLOCK SHALL BEAR AGAINST FITTINGS ONLY AND SHALL BE CLEAR OF JOINTS TO PERMIT TAKING UP OR DISMANTLING JOINT. INSTALL 8 MIL. PLASTIC SHEETING BETWEEN FITTING AND BLOCK.
5. CONTRACTOR SHALL INSTALL BLOCKING ADEQUATE TO WITHSTAND TEST PRESSURE AS WELL AS TO CONTINUOUSLY WITHSTAND OPERATING PRESSURE UNDER ALL CONDITIONS OF SERVICE.
6. IN MUCK OR PEAT, PIPE AND FITTING RESTRAINT SHALL BE AS DIRECTED BY THE DISTRICT.
7. CONNECTIONS TO EXISTING PRESSURIZED SYSTEM SHALL BE BLOCKED FOR IMMEDIATE THRUST.



NOTES:

1. CONCRETE BLOCKING AREA IS BASED ON 250 PSI WATER PRESSURE AND 3,000 PSI CONCRETE STRENGTH.
2. HARDWARE EMBEDDED IN CONCRETE SHALL BE CLEANED AND COATED WITH COAL TAR EPOXY OR APPROVED BITUMINOUS COATING EQUIVALENT PRIOR TO INSTALLATION. HARDWARE NOT EMBEDDED IN CONCRETE SHALL BE CLEANED AND COATED AFTER INSTALLATION. ALL BOLTS, ALL-THREAD, AND HARDWARE TO BE ZINC COATED OR APPROVED EQUAL.
3. IN-LINE VALVE SHALL BE M.J.xM.J. AND BE RESTRAINED WITH MEGA-LUGS, OR EQUAL.
4. HARDWARE SHALL BE TWO CARBON STEEL HALF BANDS (5/8" THICK) EQUAL TO 595 SOCKET CLAMP FROM ANVIL INTERNATIONAL. RODS SHALL BE ALL-THREAD, BENT AT THE ENDS OR ALL-THREAD WITH BOLTS AND WASHERS AT END, OR BENT ANCHOR BOLTS. RODS/BOLTS SHALL HAVE 12" MIN. EMBEDMENT FOR INLINE VALVES.

CONCRETE BLOCKING - HORIZONTAL

NOT TO SCALE

DETAIL APPROVALS

EDITOR TMC

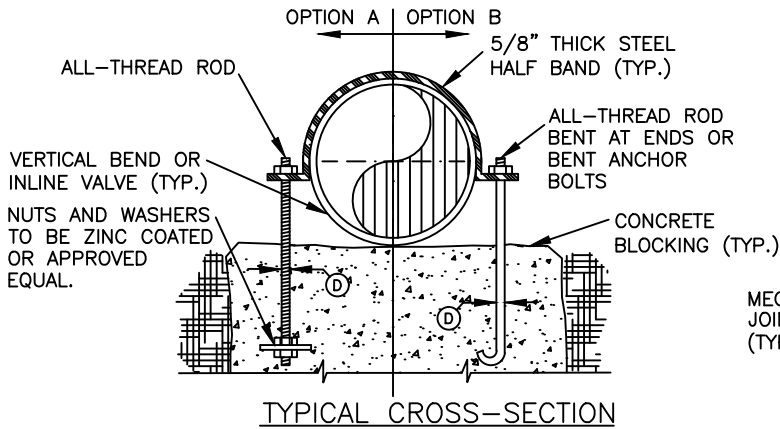
ENG. DIR. CF

NORTHSHORE UTILITY DISTRICT

2025 STANDARD WATER DETAILS

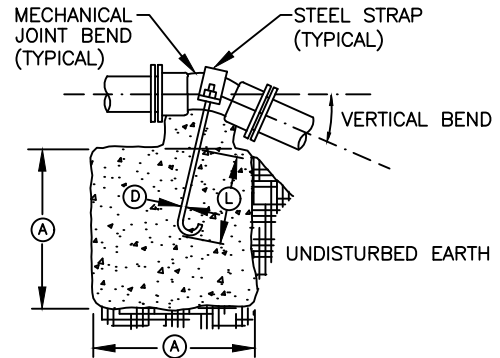
1

LAST UPDATED
MAY 2025

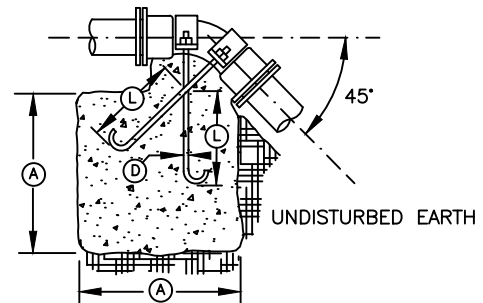


VERTICAL BLOCKING

PIPE SIZE	VERT. BEND	CU.FT.	(A)	(D)	(L)
4"	11-1/4"	8	2.0'	3/4"	1.5'
	22-1/2"	11	2.2'	3/4"	2.0'
	30"	17	2.6'	3/4"	2.0'
	45"	30	3.1'	3/4"	2.0'
6"	11-1/4"	11	2.2'	3/4"	2.0'
	22-1/2"	25	2.9'	3/4"	2.0'
	30"	41	3.5'	3/4"	2.0'
	45"	68	4.1'	3/4"	2.0'
8"	11-1/4"	16	2.5'	3/4"	2.0'
	22-1/2"	47	3.6'	3/4"	2.5'
	30"	70	4.1'	3/4"	2.5'
	45"	123	5.0'	3/4"	2.0'
12"	11-1/4"	32	3.2'	3/4"	2.0'
	22-1/2"	88	4.5'	7/8"	3.0'
	30"	132	5.1'	7/8"	2.5'
	45"	232	6.1'	3/4"	2.5'
16"	11-1/4"	70	4.1'	7/8"	3.0'
	22-1/2"	184	5.7'	1-1/8"	4.0'
	30"	275	6.5'	1-1/4"	4.0'
	45"	478	7.8'	1-1/8"	4.0'
20"	11-1/4"	91	4.5'	7/8"	3.0'
	22-1/2"	225	6.1'	1-1/4"	4.0'
	30"	330	6.9'	1-3/8"	4.5'
	45"	560	8.2'	1-1/4"	4.0'
24"	11-1/4"	128	5.0'	1"	3.5'
	22-1/2"	320	6.8'	1-3/8"	4.5'
	30"	480	7.9'	1-5/8"	5.5'
	45"	820	9.4'	1-3/8"	4.5'



BLOCKING FOR 11-1/4", 22-1/2" & 30" VERTICAL BENDS



BLOCKING FOR 45° VERTICAL BENDS

NOTES:

1. CONCRETE BLOCKING AREA IS BASED ON 250 PSI WATER PRESSURE AND 3,000 PSI CONCRETE STRENGTH.
2. HARDWARE EMBEDDED IN CONCRETE SHALL BE CLEANED AND COATED WITH COAL TAR EPOXY OR APPROVED BITUMINOUS COATING EQUIVALENT PRIOR TO INSTALLATION. HARDWARE NOT EMBEDDED IN CONCRETE SHALL BE CLEANED AND COATED AFTER INSTALLATION. ALL BOLTS, ALL-THREAD, AND HARDWARE TO BE ZINC COATED OR APPROVED EQUAL.
3. INSTALL 8 MIL. PLASTIC SHEETING BETWEEN FITTING AND BLOCK.
4. HARDWARE SHALL BE TWO CARBON STEEL HALF BANDS (5/8" THICK) EQUAL TO 595 SOCKET CLAMP FROM ANVIL INTERNATIONAL. RODS SHALL BE ALL-THREAD, BENT AT THE ENDS OR ALL-THREAD WITH BOLTS AND WASHERS AT END, OR BENT ANCHOR BOLTS. RODS/BOLTS SHALL HAVE 12" MIN. EMBEDMENT FOR INLINE VALVES, OR AS SHOWN ON VERTICAL BLOCKING TABLE.

CONCRETE BLOCKING - VERTICAL

NOT TO SCALE

DETAIL APPROVALS

EDITOR TMC

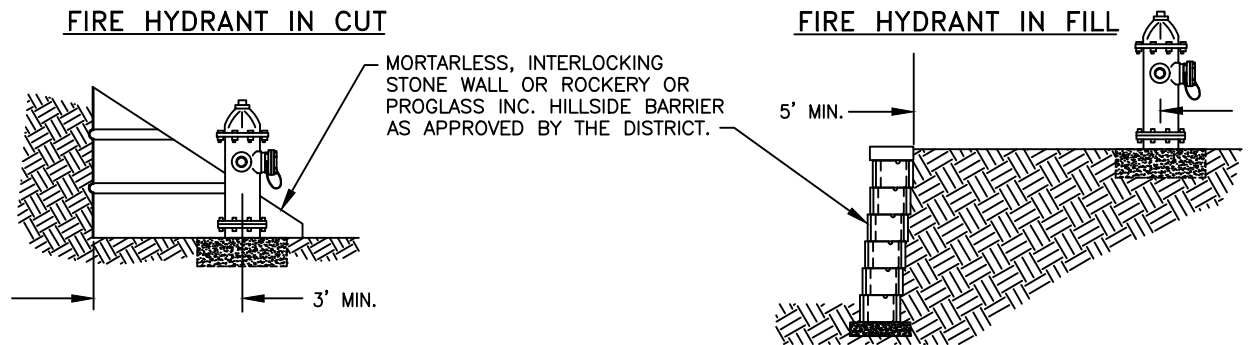
ENG. DIR. CF

NORTHSHORE UTILITY DISTRICT

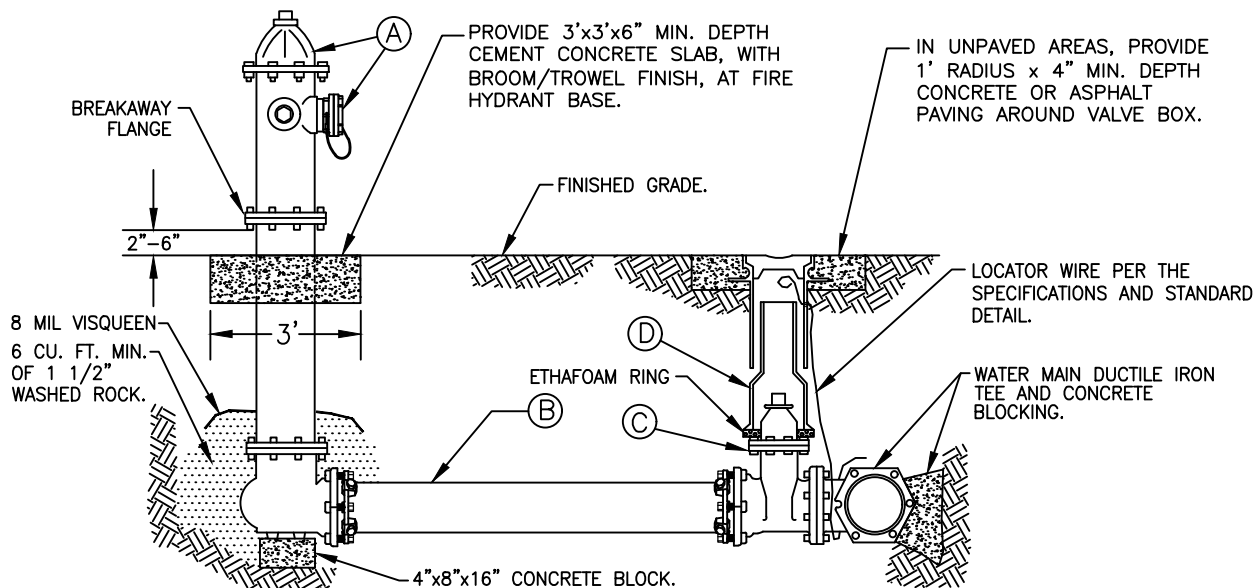
2025 STANDARD WATER DETAILS

2

LAST UPDATED
MAY 2025



FIRE HYDRANT LOCATION IN CUT OR FILL



MATERIALS LIST

ITEM DESCRIPTION

- (A) FIRE HYDRANT: SHALL BE IN CONFORMANCE WITH AWWA STANDARD SPECIFICATION C-502. PROVIDE STORZ ADAPTERS (INTEGRAL OR NON-INTEGRAL) AS FOLLOWS: 4" FOR ALL LOCATIONS, EXCEPT FOR WITHIN KIRKLAND WHERE 5" IS REQUIRED. HYDRANT SHALL BE FACTORY PRIME COATED. TOP COAT SHALL BE TWO BRUSH COATS OF SHERWIN WILLIAMS WHITE INDUSTRIAL ENAMEL #B54W1101. HYDRANT MODEL SHALL BE FROM THIS LIST:
- MUELLER: SUPER CENTURION
 - CLOW: MEDALLION
 - M&H: 129S
 - EAST JORDAN IRON WORKS: WATERMASTER 5CD250
- (B) 6" CL. 52 D.I. PIPE, 3' MIN. AND 50' MAX. WITH RESTRAINED JOINTS.
- (C) 6" R.W. GATE VALVE, F.L.xR.J.: SHALL BE PER THE SPECIFICATIONS. FOR VALVE OPERATING NUT DEPTHS, SEE STANDARD WATER DETAIL #11
- (D) TWO-PIECE VALVE BOX AND ETHAFOAM RING PER THE SPECIFICATIONS AND STANDARD WATER DETAIL #11.

NOTES:

1. HYDRANT SHALL BE ORIENTED PER FIRE MARSHALL AND HAVE 3' MIN. CLEARANCE AROUND CENTERLINE.
2. BOLLARDS REQUIRED AS DETERMINED BY DISTRICT. SEE STANDARD WATER DETAIL 3a.
3. IF HYDRANT RUN IS LONGER THAN 50', PIPE SIZE WILL BE DETERMINED BY DISTRICT.
4. HYDRANT EXTENSIONS ARE NOT ALLOWED.
5. HYDRANTS NOT IN SERVICE SHALL BE COVERED WITH BLACK HEAVY-DUTY LAWN AND GARDEN BAG, SECURED WITH DUCT TAPE OR ELECTRICAL TAPE.
6. CHAINS ARE TO BE REMOVED FROM CAPS.

FIRE HYDRANT ASSEMBLY

NOT TO SCALE

DETAIL APPROVALS

EDITOR TMC

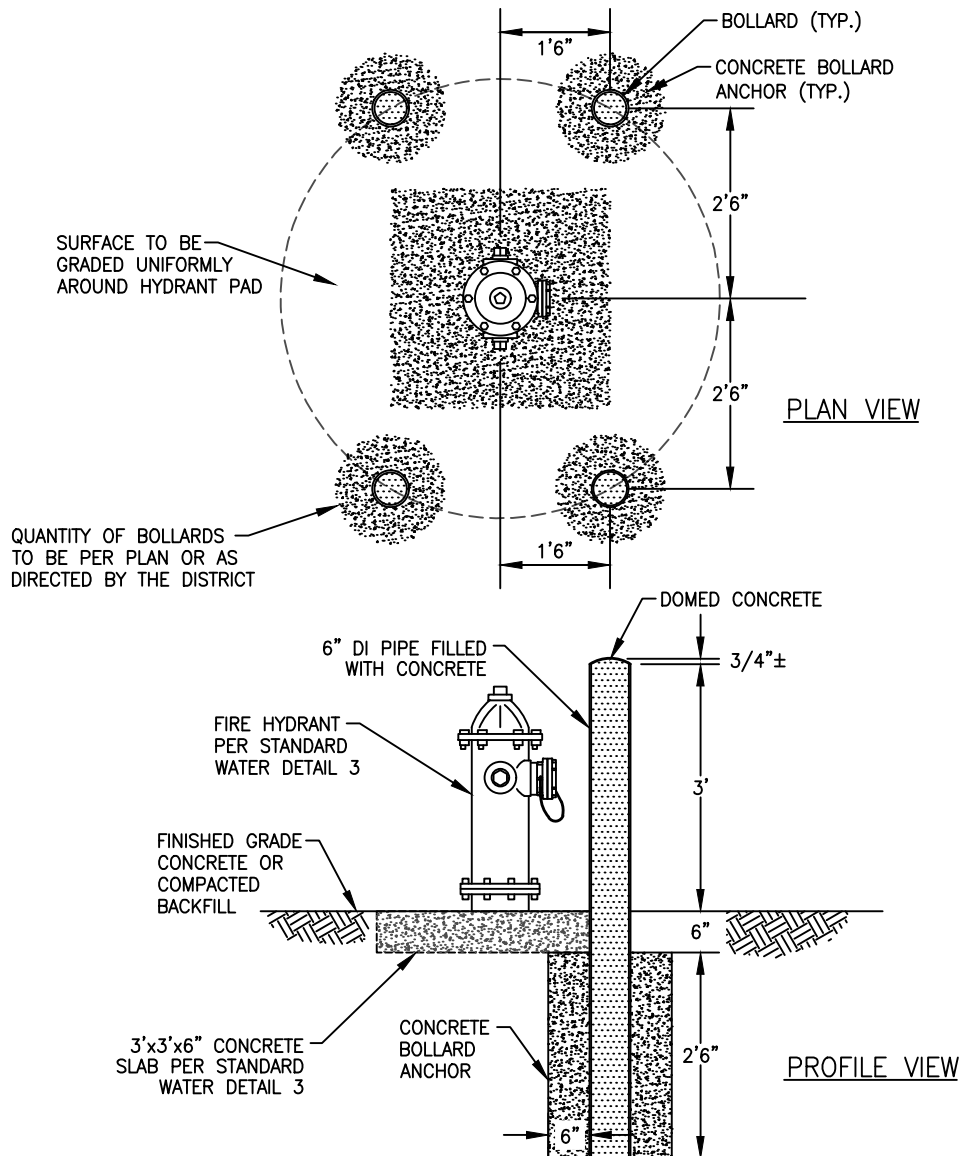
ENG. DIR. CF

NORTHSHORE UTILITY DISTRICT

2025 STANDARD WATER DETAILS

3

LAST UPDATED
MAY 2025



NOTES:

1. BOLLARDS SHALL BE OF SUFFICIENT NUMBER TO PROTECT THE HYDRANT, MINIMUM 2 AND UP TO 4. BOLLARDS TO BE INSTALLED AS SHOWN ON DRAWINGS OR AS DIRECTED BY DISTRICT.
2. LOCATE BOLLARDS A MINIMUM OF 18" IN FRONT OF HYDRANT, 5' APART. DO NOT BLOCK ACCESS TO PORTS.
3. BOLLARDS TO BE 6" DIAMETER DUCTILE IRON PIPE SET IN 30" OF CONCRETE AT LEAST 16" IN DIAMETER. INSIDE OF THE PIPE SHALL BE FILLED WITH CONCRETE WITH SMOOTH CONCRETE MOUND AS TOP CAP.
4. BOLLARDS SHALL EXTEND ABOVE GRADE TO A MINIMUM OF 3'. BOLLARDS ARE TO BE PLUMB AND TOP OF BOLLARDS TO BE AT SAME ELEVATION.
5. ABOVE GROUND PORTION OF BOLLARDS TO BE PRIME COATED FOLLOWED BY 2 TOP COATS OF SHERWIN WILLIAMS WHITE INDUSTRIAL ENAMEL #B54W101, TO MATCH HYDRANT.
6. BOLLARDS ARE INTENDED TO PROTECT HYDRANT FROM SPEEDS LESS THAN 25MPH, SUCH AS RESIDENTIAL STREETS AND PARKING LOTS.
7. ALTERNATIVE OPTION: 4 1/2" OD SCHEDULE 40 GALVANIZED STEEL PIPE FILLED WITH CONCRETE MAY BE SUBSTITUTED FOR THE DUCTILE IRON PIPE. CONCRETE BOLLARD ANCHOR, HEIGHTS, AND DISTANCES SHALL MATCH THOSE FOR THE DUCTILE IRON PIPE. SMOOTH, YELLOW BOLLARD COVER WITH TWO REFLECTIVE RED STRIPES, POST GUARD PART NUMBER CL1385D OR APPROVED EQUAL, REQUIRED FOR GALVANIZED STEEL PIPE BOLLARDS.

FIRE HYDRANT BOLLARDS

NOT TO SCALE

DETAIL APPROVALS

EDITOR *TMC*

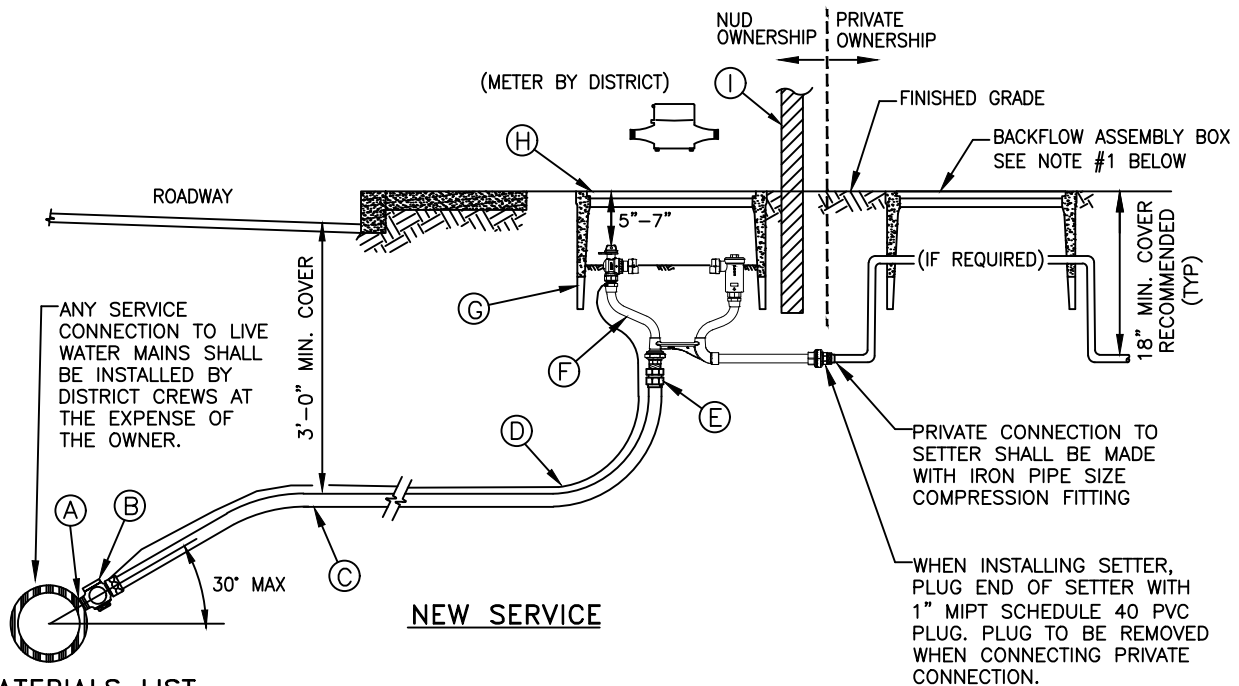
ENG. DIR. *CF*

NORTHSHORE UTILITY DISTRICT

2025 STANDARD WATER DETAILS

3a

LAST UPDATED
MAY 2025



MATERIALS LIST

ITEM DESCRIPTION

- (A) DIRECT TAP: DIRECT TAP OF 6" AND LARGER DIAMETER DUCTILE IRON OR CAST IRON IS REQUIRED FOR 1" SERVICES. SADDLES ARE ONLY ALLOWED ON DUCTILE IRON OR CAST IRON PIPE WHEN THE PIPE DIAMETER IS SMALLER THAN 6".
- SADDLE: ALL SADDLES SHALL BE DUCTILE IRON CASTING WITH CC THREADS. FOR ALL PIPE MATERIAL OTHER THAN PVC PIPE, SADDLES SHALL BE SINGLE STRAP TYPE EQUAL TO FORD FC101, ROMAC 101NS, MUELLER DR1S, OR DISTRICT APPROVED EQUAL. FOR PVC PIPE, SADDLES SHALL BE DOUBLE STRAP TYPE EQUAL TO MUELLER DR2S, FORD FCD202, OR ROMAC 202NS.
- (B) 1" CORPORATION STOP, CCxPACK JOINT, FORD F1001 OR APPROVED EQUAL, WITH STAINLESS STEEL STIFFENER, FORD INSERT-53-72 OR MUELLER 505142. CORPORATION STOP SHALL BE ORIENTED SO THAT THE SHUT OFF IS IN THE 12 O'CLOCK POSITION.
- (C) 1 1/4" REHAU MUNICIPEX PEX_a 3306, COPPER TUBE SIZE (CTS), SDR 9, AWWA C904, PER THE SPECIFICATIONS. PIPE SHALL BE CONTINUOUS FROM CORPORATION STOP TO METER SETTER. ALL PEX_a PIPE INSTALLED BY OPEN-CUT CONSTRUCTION SHALL BE BEDDED IN SAND 4" OVER AND UNDER. NATIVE MATERIAL WILL NOT BE ALLOWED FOR BEDDING.
- (D) TRACER WIRE: DIRECT BURY BLUE 14 GAUGE COPPER, CONTINUOUS, SOLID CORE, POLYETHYLENE INSULATED WIRE PER THE SPECIFICATIONS. CONNECTION AT THE METER SETTER SHALL BE MADE WITH AN ALL STAINLESS STEEL HOSE CLAMP. CONNECTION AT THE MAIN LINE WIRE SHALL BE MADE WITH A SPLIT-BOLT CONNECTOR. STRIP COATING PRIOR TO CONNECTION. TRACER WIRE MAY BE REQUIRED FROM SETTER TO HOUSE, CHECK WITH LOCAL JURISDICTION FOR REQUIREMENTS.
- (E) 1" ADAPTER, MIPxPACK JOINT, FORD #C86-44-NL WITH STIFFENER, FORD INSERT-53-72 OR MUELLER 505142.
- (F) 1" METER SETTER WITH DUAL CHECK VALVE: FORD VBHC74-84W-11-44A-FP-NL, OR MUELLER 390B2588-6A03N
- (G) METER BOX: ARMORCAST, A6001946PCX12-NUD (NO "MOUSE HOLES") OR DFW, DFW1324CNP4-12-BODY
- (H) COVER: ARMORCAST, A6001969-H10-NUD OR DFW, DFW1324C-4MT-SMALL-NS-NHK-LID
- (I) 2"x4"x4', MARKER POST. PAINTED WHITE WITH "WATER" STENCILED ONTO IT IN BLACK.

NOTE:

- IF REQUIRED FOR PREMISE ISOLATION, AN APPROVED BACKFLOW ASSEMBLY SHALL BE INSTALLED IMMEDIATELY BEHIND THE WATER METER PER DISTRICT STANDARD WATER DETAILS #13, #14a, AND #14b .
- ALL PEX_a PIPE TO PACK JOINT CONNECTIONS REQUIRE A STIFFENER INSERT.
- MULTIPLE, ADJACENT DIRECT TAPS ON NEW DI MAINS SHALL BE INSTALLED WITH A MINIMUM 18" HORIZONTAL SEPARATION BETWEEN SERVICES AND FROM PIPE BELLS.

1" WATER SERVICE

NOT TO SCALE

DETAIL APPROVALS

EDITOR TMC

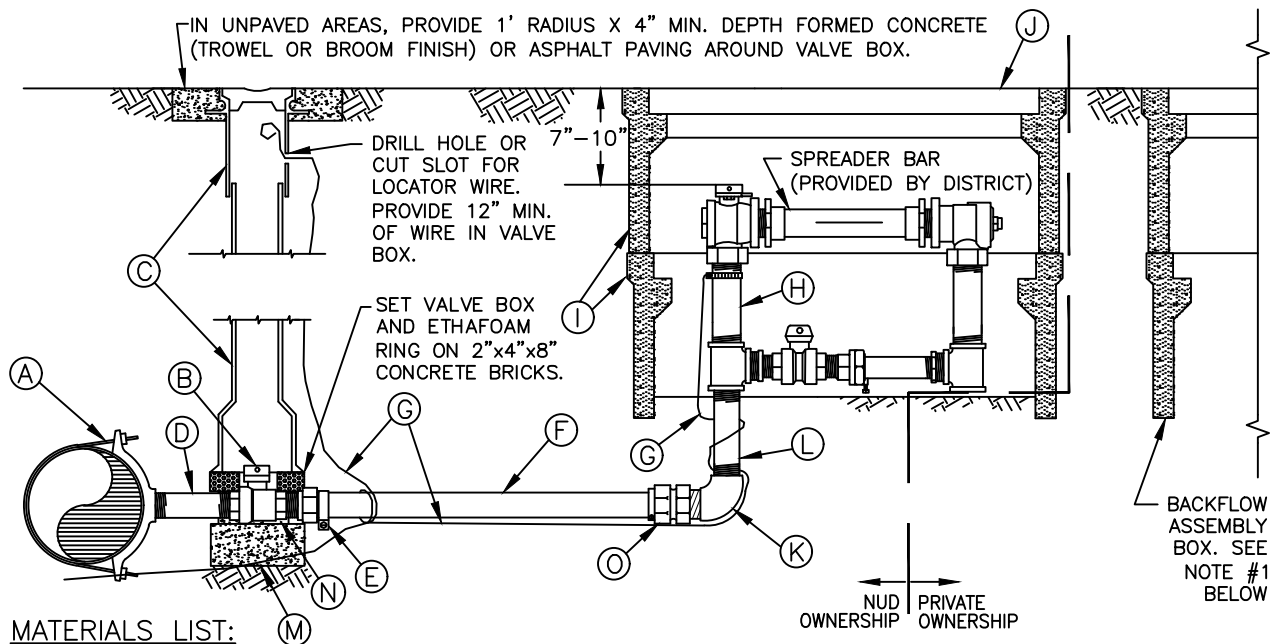
ENG. DIR. CF

NORTHSHORE UTILITY DISTRICT

2025 STANDARD WATER DETAILS

4

LAST UPDATED
MAY 2025



MATERIALS LIST:

ITEM DESCRIPTION

- (A) SADDLE: ALL SADDLES SHALL BE DUCTILE IRON CASTING WITH IP THREADS. FOR ALL PIPE MATERIAL OTHER THAN PVC PIPE, SADDLES SHALL BE SINGLE STRAP TYPE EQUAL TO FORD FC101, ROMAC 101NS, MUELLER DR1S, OR DISTRICT APPROVED EQUAL. FOR PVC PIPE, SADDLES SHALL BE DOUBLE STRAP TYPE EQUAL TO MUELLER DR2S, FORD FCD202, OR ROMAC 202NS. ANY SERVICE CONNECTION TO LIVE WATER MAINS SHALL BE INSTALLED BY DISTRICT CREWS AT THE EXPENSE OF THE OWNER.
- (B) BALL VALVE, FIPxFIP; FORD #B11-777-NL, WITH 2" OPERATING NUT, FORD #QT-67. FOR VALVE OPERATING NUT DEPTHS, SEE STANDARD WATER DETAIL #11.
- (C) TWO-PIECE CAST IRON VALVE BOX AND ETHAFOAM RING PER THE SPECIFICATIONS AND STANDARD WATER DETAIL #11.
- (D) BRASS CLOSE NIPPLE, MIPxMIP.
- (E) ADAPTER, MIPxPACK JOINT, FORD #C84-77-NL WITH STIFFENER, FORD INSERT-55, OR MUELLER 528707.
- (F) 2" REHAU MUNICIPEX PEX_a 3306, COPPER TUBE SIZE (CTS), SDR 9, AWWA C904, PER THE SPECIFICATIONS. PIPE SHALL BE CONTINUOUS FROM BALL VALVE TO METER SETTER. ALL PEX_a PIPE INSTALLED BY OPEN-CUT CONSTRUCTION SHALL BE BEDDED IN SAND, 4" OVER AND UNDER. NATIVE MATERIAL WILL NOT BE ACCEPTED FOR BEDDING.
- (G) TRACER WIRE: DIRECT BURY BLUE 14 GAUGE COPPER, CONTINUOUS, SOLID CORE, POLYETHYLENE INSULATED WIRE PER THE SPECIFICATIONS. CONNECTION AT THE METER SETTER SHALL BE MADE WITH AN ALL STAINLESS STEEL HOSE CLAMP. CONNECTION AT THE MAIN LINE WIRE SHALL BE MADE WITH A SPLIT-BOLT CONNECTOR. STRIP COATING PRIOR TO CONNECTION.
- (H) 1-1/2" METER SETTER: FORD VBH86-12B-11-66-NL. 2" METER SETTER: FORD VBH87-12B-11-77-NL.
- (I) METER BOX: ARMORCAST, A6001640PCX12-NUD (2 BOXES STACKED, NO "MOUSE HOLES").
- (J) COVER: ARMORCAST, A6001947T-H10-NUD.
- (K) 90° BRASS ELBOW, FIPxFIP. SIZE TO MATCH SETTER.
- (L) BRASS NIPPLE, LENGTH TO FIT. MIPxMIP. SIZE TO MATCH SETTER.
- (M) 4"x8"x16" CONCRETE BLOCK.
- (N) TWO 2"x4"x8" CONCRETE BRICKS, ONE ON EITHER SIDE OF THE BALL VALVE TO SUPPORT ETHAFOAM RING.
- (O) ADAPTER, MIPxPACK JOINT, FORD #C84-67-NL WITH STIFFENER FOR 1 1/2" SETTER AND FORD #C84-77-NL WITH STIFFENER FOR 2" SETTER. STIFFENER, FORD INSERT-55 OR MUELLER 528707.

NOTE:

- FOR PREMISE ISOLATION, AN APPROVED BACKFLOW ASSEMBLY SHALL BE INSTALLED IMMEDIATELY BEHIND THE WATER METER PER DISTRICT STANDARD WATER DETAILS #13, #14a, AND #14b.
- ALL PEX_a PIPE TO PACK JOINT CONNECTIONS REQUIRE A STIFFENER INSERT.

1-1/2" & 2" WATER SERVICE

NOT TO SCALE

DETAIL APPROVALS

EDITOR TMC

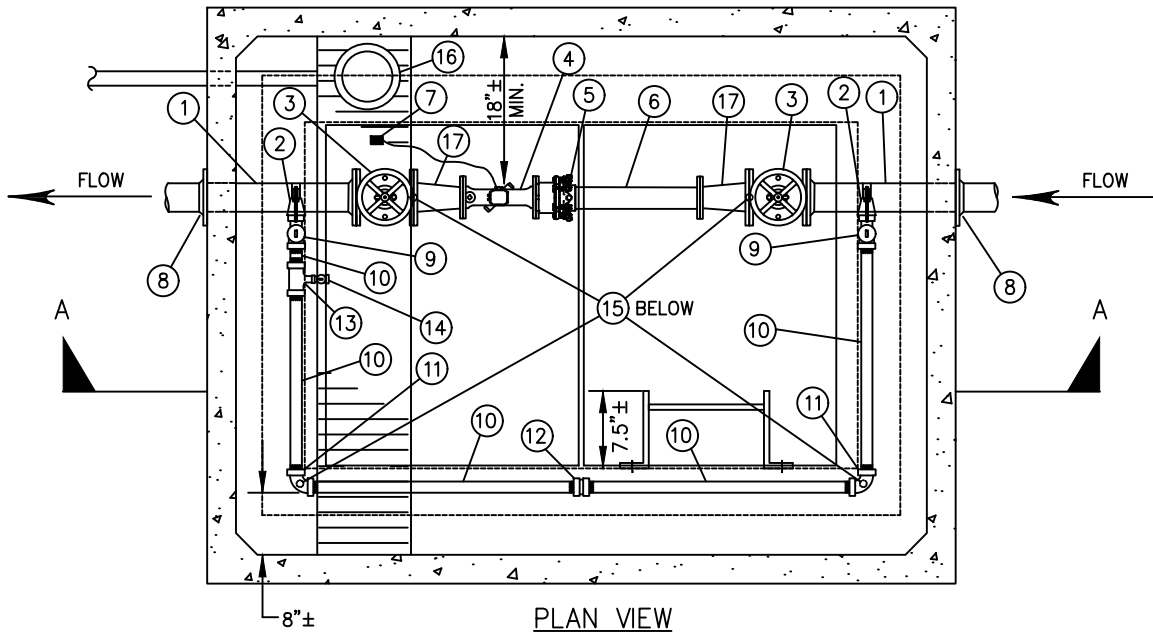
ENG. DIR. EM

NORTHSHORE UTILITY DISTRICT

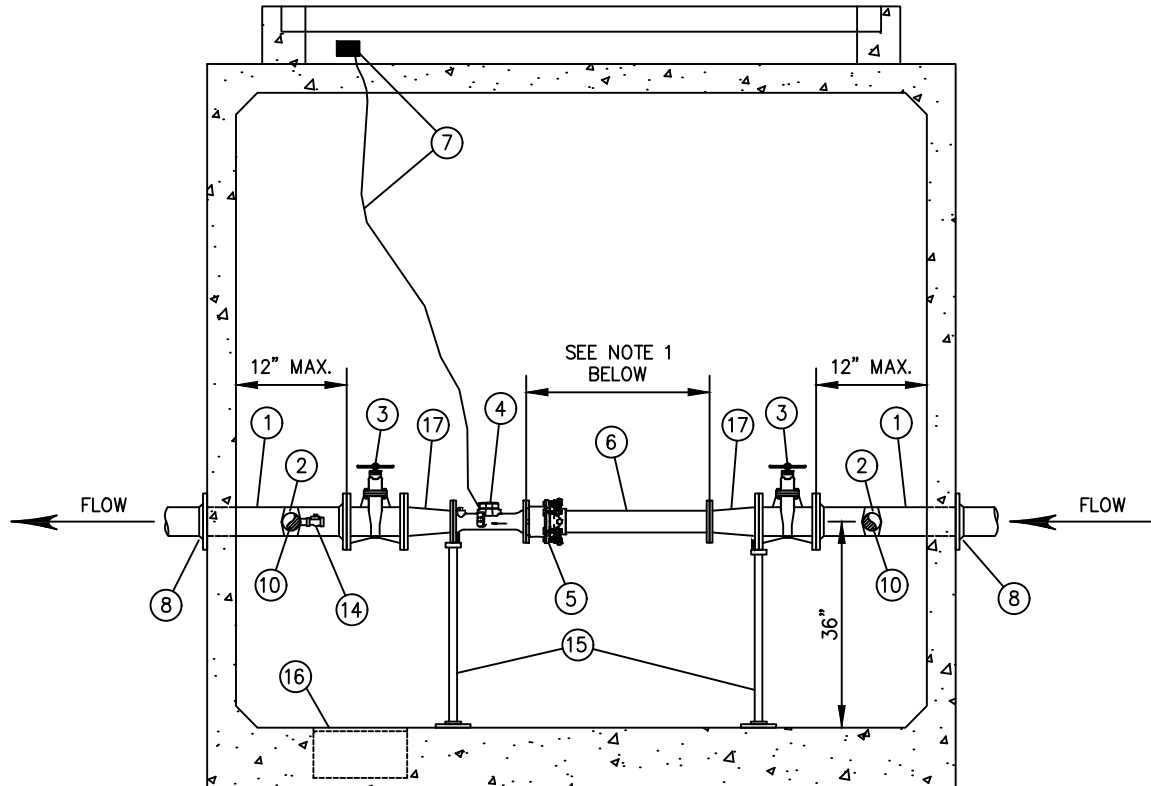
2025 STANDARD WATER DETAILS

5

LAST UPDATED
MARCH 2024



PLAN VIEW
NOT TO SCALE



SECTION A-A
NOT TO SCALE

NOTES:

1. DISTANCE BETWEEN METER AND UPSTREAM REDUCER FOR 3" SERVICES SHALL BE A MINIMUM OF 15". FOR 3" WATER SERVICE INSTALLATION, SEE NOTES ON ITEM 18 ON DETAIL #6a.
2. SEE NUD STANDARD WATER DETAIL #6a FOR MATERIALS LIST AND ADDITIONAL NOTES.
3. SEE NUD STANDARD WATER DETAIL #16 AND #16a FOR VAULT DETAILS.

3" & 4" WATER SERVICE

NOT TO SCALE

DETAIL APPROVALS

EDITOR TMC

ENG. DIR. CF

NORTHSHORE UTILITY DISTRICT

2025 STANDARD WATER DETAILS

6

LAST UPDATED
MAY 2025

MATERIALS LIST

ITEM QTY. DESCRIPTION

- | | | |
|---|---|--|
| ① | 2 | D.I. SPOOL, FLxPE, 3'± LONG. |
| ② | 2 | SADDLE WITH STAINLESS STEEL STRAP, ROMAC 202NS, FORD FCD202, OR MUELLER DR2S; WITH 2" IP TAP. |
| ③ | 2 | RESILIENT SEAT GATE VALVE, NRS, FL, O-RING PACKING WITH HANDWHEEL. VALVE TO BE AMERICAN, MUELLER, M&H, OR CLOW MEETING AWWA C515. |
| ④ | 1 | FLANGED ULTRASONIC METER – LEAD-FREE BRONZE ALLOY, TO BE PROVIDED BY DISTRICT AND INSTALLED BY CONTRACTOR. |
| ⑤ | 1 | FLANGED COUPLING ADAPTER TO BE ROMAC FLANGED COUPLING ADAPTER, STYLE RFCA. |
| ⑥ | 1 | D.I. ADAPTER, FLxPE, LENGTH TO FIT |
| ⑦ | 1 | METER ENDPOINT AND MOUNTING BRACKET, TO BE PROVIDED AND INSTALLED BY DISTRICT ON HATCH RISER. |
| ⑧ | 2 | UNI-FLANGE ADAPTER. |
| ⑨ | 2 | 2" MIPxFIP LOCKABLE BALL VALVE. |
| ⑩ | 5 | 2" BRASS NIPPLE, LENGTH TO FIT. |
| ⑪ | 2 | 2" BRASS 90° BEND. |
| ⑫ | 1 | 2" BRASS UNION. |
| ⑬ | 1 | 2"x1" BRASS TEE. |
| ⑭ | 1 | 3/4" HOSE BIB. |
| ⑮ | 4 | ADJUSTABLE PIPING SUPPORT, STANDON MODEL #S89, OR EQUAL, SET ON CONCRETE. STANDON MODEL #S92, OR EQUAL, SHALL ONLY BE USED FOR 2" BYPASS. |
| ⑯ | 1 | SUMP PUMP OR GRAVITY DRAIN AS REQUIRED BY SITE CONDITIONS, TO BE DETERMINED BY THE DEVELOPER AND CONTRACTOR AND REVIEWED AND APPROVED BY THE DISTRICT. |

FOR GRAVITY: SUMP DRAIN, ZURN Z-551, THREADED, WITH ZURN Z-1099 BACKWATER VALVE, THREADED x NO-HUB, WITH 4" D.I. PIPE TO 12" MIN. BEYOND VAULT WALL AND 4" D.I., MIN. 1% SLOPE TO DAYLIGHT OR C.B.

FOR SUMP PUMP: 16" DIAM. x 8" DEEP SUMP WITH ZOELLER MODEL 57 SUMP PUMP WITH SOLID BUOYANT POLYPROPYLENE FLOAT. PROVIDE ELECTRICAL POWER WITHIN 4' MIN.-6' MAX. VERTICAL DISTANCE AND 1' MAX. HORIZONTAL DISTANCE TO SUMP PUMP PER ALL APPLICABLE CODES. CONSTRUCT 1-1/4", SCH. 80 PVC DISCHARGE PIPING, WITH LOCATE WIRE, TO NEAREST CATCH BASIN OR APPROVED LOCATION. DISCHARGE PIPING SHALL BE ATTACHED TO THE INTERIOR VAULT WALL WITH APPROVED FASTENERS AT 3' SPACING. INSTALL A QUICK DISCONNECT COUPLING, CHECK VALVE, AND ISOLATION BALL VALVE ON DISCHARGE PIPING IMMEDIATELY AFTER SUMP PUMP. SEE STANDARD WATER DETAIL #16A FOR PUMP AND PIPING DETAIL.

- | | | |
|---|---|---|
| ⑰ | 2 | FOR 3" WATER SERVICES: 4"x3" CONCENTRIC REDUCER, FLxFL. PIPE AND FITTING SIZES BETWEEN GATE VALVES (ITEM NUMBERS 4, 5, AND 6) SHALL MATCH METER SIZE. |
|---|---|---|

NOTES:

1. PROVIDE SHOP DRAWINGS AND SUBMITTALS FOR ALL MATERIALS TO THE DISTRICT FOR REVIEW AND APPROVAL PRIOR TO CONSTRUCTION.
2. VAULT SHALL BE UTILITY VAULT 687-LA (8'Lx6'Wx7'D; INSIDE DIMENSION). SEE DISTRICT STANDARD DETAIL #S 16 AND 16a FOR VAULT DETAIL.
3. ALL PIPE AND CONDUIT PENETRATIONS SHALL BE CORE-DRILLED ON-SITE AND SHALL BE SEALED WATERTIGHT. PROVIDE "LINK-SEAL" FITTINGS AT ALL PENETRATIONS.
4. ALL PIPING AND APPURTENANCES OUTSIDE THE VAULT SHALL BE RESTRAINED JOINT. IN ADDITION TO THE RESTRAINED JOINTS, THRUST BLOCKING AT ALL TEES AND BENDS PER DISTRICT STANDARD WATER DETAIL #S 1 AND 2 SHALL BE REQUIRED.
5. THE CONTRACTOR IS RESPONSIBLE FOR ELECTRICAL PERMITS AND APPROVALS FOR SUMP PUMP INSTALLATIONS.
6. FOR PREMISE ISOLATION, AN APPROVED BACKFLOW ASSEMBLY SHALL BE INSTALLED IMMEDIATELY BEHIND THE WATER METER PER DISTRICT STANDARD WATER DETAIL #14a OR #14b.
7. NUD'S OWNERSHIP WILL BE TO THE DOWNSTREAM OUTSIDE EDGE OF THE VAULT.

3" & 4" WATER SERVICE

NOT TO SCALE

DETAIL APPROVALS

EDITOR TMC

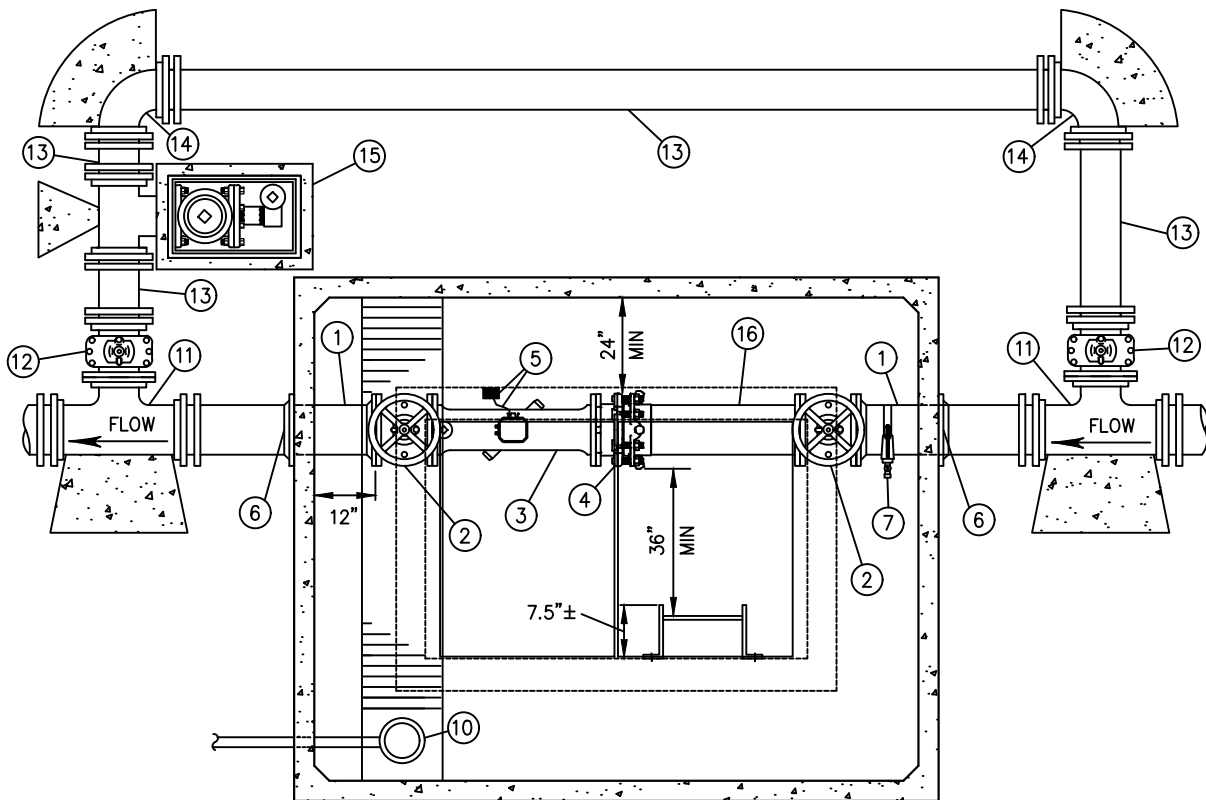
ENG. DIR. CF

NORTHSHORE UTILITY DISTRICT

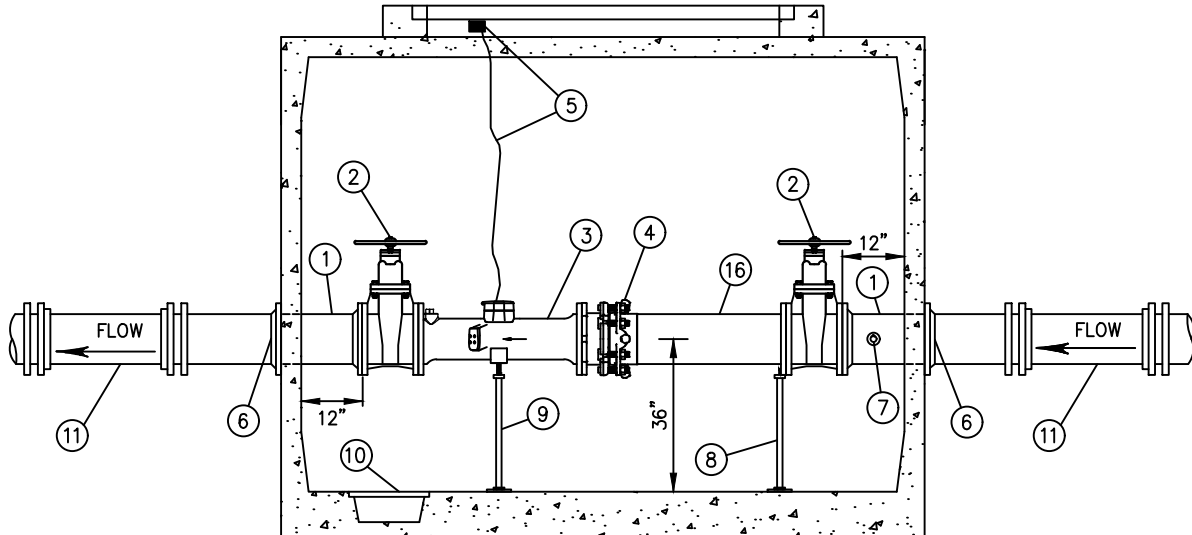
2025 STANDARD WATER DETAILS

6a

LAST UPDATED
MAY 2025



PLAN VIEW
NOT TO SCALE



SECTION A-A
NOT TO SCALE

NOTES:

1. SEE NUD STANDARD WATER DETAIL #7A FOR MATERIALS LIST AND ADDITIONAL NOTES.
2. SEE NUD STANDARD WATER DETAIL #16 AND #16A FOR VAULT DETAILS.

6" WATER SERVICE

NOT TO SCALE

DETAIL APPROVALS	
EDITOR	TMC
ENG. DIR.	CF

NORTHSHORE UTILITY DISTRICT
2025 STANDARD WATER DETAILS

7

LAST UPDATED
MAY 2025

MATERIALS LIST: ALL PIPING & APPURTENANCES TO MATCH METER SIZE

ITEM QTY. DESCRIPTION

- ① 2 D.I. SPOOL, FLxPE, 5'± LONG.
- ② 2 RESILIENT SEAT GATE VALVE, NRS, FL, O-RING PACKING WITH HANDWHEEL. VALVE TO BE AMERICAN, MUELLER OR CLOW MEETING AWWA C515.
- ③ 1 FLANGED ULTRASONIC METER – LEAD-FREE BRONZE ALLOY, TO BE PROVIDED BY DISTRICT AND INSTALLED BY CONTRACTOR.
- ④ 1 FLANGED COUPLING ADAPTER TO BE ROMAC FLANGED COUPLING ADAPTER, STYLE RFCA.
- ⑤ 1 METER ENDPOINT AND MOUNTING BRACKET, TO BE PROVIDED AND INSTALLED BY DISTRICT ON HATCH RISER.
- ⑥ 2 UNI-FLANGE ADAPTER.
- ⑦ 1 SADDLE WITH STAINLESS STEEL STRAP, ROMAC 202NS, FORD FCD202, OR MUELLER DR2S; WITH 1" IP TAP AND 3/4" HOSE BIB.
- ⑧ 1 ADJUSTABLE PIPING SUPPORT, STANDON MODEL #S89 (FLANGE MOUNT), OR EQUAL, SET ON CONCRETE.
- ⑨ 1 ADJUSTABLE PIPING SUPPORT, STANDON MODEL #S92 (SADDLE MOUNT), OR EQUAL, SET ON CONCRETE.
- ⑩ 1 SUMP PUMP OR GRAVITY DRAIN AS REQUIRED BY SITE CONDITIONS, TO BE DETERMINED BY THE DEVELOPER AND CONTRACTOR AND REVIEWED AND APPROVED BY THE DISTRICT.

FOR GRAVITY: SUMP DRAIN, ZURN Z-551, THREADED, WITH ZURN Z-1099 BACKWATER VALVE, THREADED x NO-HUB, WITH 4" D.I. PIPE TO 12" MIN. BEYOND VAULT WALL AND 4" D.I., MIN. 1% SLOPE TO DAYLIGHT OR C.B.

FOR SUMP PUMP: 16" DIAM. x 8" DEEP SUMP WITH ZOELLER MODEL 57 SUMP PUMP WITH SOLID BUOYANT POLYPROPYLENE FLOAT. PROVIDE ELECTRICAL POWER WITHIN 4' MIN.-6' MAX. VERTICAL DISTANCE AND 1' MAX. HORIZONTAL DISTANCE TO SUMP PUMP PER ALL APPLICABLE CODES. CONSTRUCT 1-1/4", SCH. 80 PVC DISCHARGE PIPING, WITH LOCATE WIRE, TO NEAREST CATCH BASIN OR APPROVED LOCATION. DISCHARGE PIPING SHALL BE ATTACHED TO THE INTERIOR VAULT WALL WITH APPROVED FASTENERS AT 3' SPACING. INSTALL A QUICK DISCONNECT COUPLING, CHECK VALVE, AND ISOLATION BALL VALVE ON DISCHARGE PIPING IMMEDIATELY AFTER SUMP PUMP. SEE STANDARD WATER DETAIL #16A FOR PUMP AND PIPING DETAIL.

- ⑪ 2 D.I. TEE, FLxRJ.
- ⑫ 2 RESILIENT SEAT GATE VALVE, NRS, FLxRJ. VALVE TO BE AMERICAN, MUELLER, M&H, OR CLOW MEETING AWWA C515. VALVE BOX AND OPERATING NUT EXTENSION TO BE PER DISTRICT STANDARD WATER DETAIL #11.
- ⑬ 4 D.I. SPOOLS, LENGTH TO FIT. RJ.
- ⑭ 2 90° D.I. BENDS, RJ.
- ⑮ 1 2" BLOW-OFF ASSEMBLY, PER DISTRICT STANDARD WATER DETAIL #10.
- ⑯ 1 D.I. SPOOL, FLxPE. LENGTH TO FIT.

NOTES:

1. PROVIDE SHOP DRAWINGS AND SUBMITTALS FOR ALL MATERIALS TO THE DISTRICT FOR REVIEW AND APPROVAL PRIOR TO CONSTRUCTION.
2. VAULT SHALL BE UTILITY VAULT 810-LA (10'Lx8'Wx7'D; INSIDE DIMENSION). SEE DISTRICT STANDARD WATER DETAILS #16 AND #16a FOR VAULT DETAIL.
3. ALL PIPE AND CONDUIT PENETRATIONS SHALL BE CORE-DRILLED ON-SITE AND SHALL BE SEALED WATERTIGHT. PROVIDE "LINK-SEAL" FITTINGS AT ALL PENETRATIONS.
4. ALL PIPING AND APPURTENANCES OUTSIDE THE VAULT SHALL BE RESTRAINED JOINT. IN ADDITION TO THE RESTRAINED JOINTS, THRUST BLOCKING AT ALL TEES AND BENDS PER DISTRICT STANDARD WATER DETAILS #1 AND #2 SHALL BE REQUIRED.
5. THE CONTRACTOR IS RESPONSIBLE FOR ELECTRICAL PERMITS AND APPROVALS FOR SUMP PUMP INSTALLATIONS.
6. FOR PREMISE ISOLATION, AN APPROVED BACKFLOW ASSEMBLY SHALL BE INSTALLED IMMEDIATELY BEHIND THE WATER METER PER DISTRICT STANDARD WATER DETAIL #14a OR #14b.
7. NUD'S OWNERSHIP WILL BE TO THE DOWNSTREAM EDGE OF THE DOWNSTREAM TEE.

6" WATER SERVICE

NOT TO SCALE

DETAIL APPROVALS

EDITOR TMC

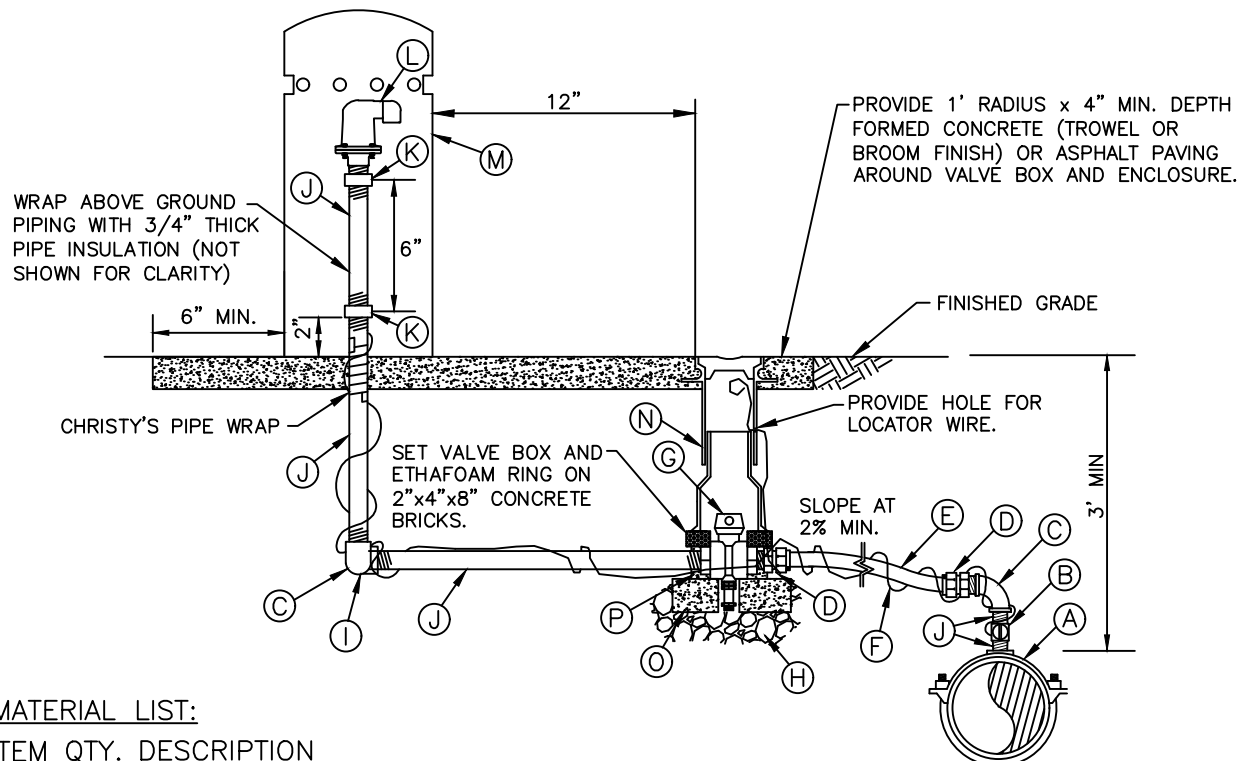
ENG. DIR. CF

NORTHSHORE UTILITY DISTRICT

2025 STANDARD WATER DETAILS

7a

LAST UPDATED
MAY 2025



MATERIAL LIST:

ITEM QTY. DESCRIPTION

- | | | |
|-----|---|--|
| (A) | 1 | SADDLE: ALL SADDLES SHALL BE DUCTILE IRON CASTING WITH IP THREADS. FOR ALL PIPE MATERIAL OTHER THAN PVC PIPE, SADDLES SHALL BE SINGLE STRAP TYPE EQUAL TO FORD FC101, ROMAC 101NS, MUELLER DR1S, OR DISTRICT APPROVED EQUAL. FOR PVC PIPE, SADDLES SHALL BE DOUBLE STRAP TYPE EQUAL TO MUELLER DR2S, FORD FCD202, OR ROMAC 202NS. |
| (B) | 1 | 2" BALL VALVE FIPxFIP, FORD #B11-777-NL OR EQUAL. |
| (C) | 2 | 2" 90° BRASS ELBOW, FIPxFIP. |
| (D) | 2 | 2" ADAPTER, MIPxPACK JOINT, FORD #C84-77-NL WITH STIFFENER, FORD INSERT-55 OR MUELLER 528707. |
| (E) | 1 | 2" REHAU MUNICIPEX PEX _a 3306, COPPER TUBE SIZE (CTS), SDR 9, AWWA C904, PER THE SPECIFICATIONS, LENGTH TO FIT. ALL PEX _a PIPE INSTALLED BY OPEN-CUT CONSTRUCTION SHALL BE BEDDED IN SAND, 4" OVER AND UNDER. IF THE DISTANCE BETWEEN BALL VALVES IS LESS THAN 5', A BRASS NIPPLE, LENGTH TO FIT, WITH BRASS FITTINGS, AS REQUIRED, WILL BE ALLOWED. |
| (F) | 1 | TRACER WIRE PER THE SPECIFICATIONS. DIRECT BURY BLUE 14 GAUGE COPPER, CONTINUOUS, SOLID CORE, POLYETHYLENE INSULATED WIRE. TRACER WIRE TO BE CONTINUOUS FROM MAINLINE. |
| (G) | 1 | 2" BALL VALVE, FIPxFIP, CAMBRIDGE BRASS #203NL-F7F7W WITH 2" OPERATING NUT, FORD #QT-67. FOR VALVE OPERATING NUT DEPTHS, SEE STANDARD WATER DETAIL #11. |
| (H) | 1 | 1 1/2" WASHED ROCK, PASSING 1 1/2" AND RETAINED ON 1/4" MESH. |
| (I) | 1 | STREET ELBOW, FIPxMIP. |
| (J) | 5 | 2" BRASS NIPPLE, LENGTH TO FIT. |
| (K) | 2 | 2" BRASS COUPLING, FIPxFIP. |
| (L) | 1 | AIR/VACUUM RELIEF VALVE, A.R.I. #D-040-C-2". |
| (M) | 1 | AIR/VACUUM ENCLOSURE, ARMORCAST P60002003B (GRANITE) OR DEKORRA 301-GT-C3 (GREEN). |
| (N) | 1 | TWO-PIECE, CAST IRON VALVE BOX AND ETHAFOAM RING PER THE SPECIFICATIONS AND STANDARD WATER DETAIL #11. |
| (O) | 2 | 4"x8"x16" CONCRETE BLOCK. |
| (P) | 2 | 2"x4"x8" CONCRETE BRICK, ONE ON EITHER SIDE OF THE BALL VALVE TO SUPPORT ETHAFOAM RING. |

NOTES:

- THE LOCATION OF THE ASSEMBLY AS SHOWN ON THE PLANS IS APPROXIMATE ONLY. THE FINAL LOCATION SHALL BE AT THE LOCAL HIGH POINT OF THE WATER MAIN AS DIRECTED BY THE DISTRICT IN THE FIELD DURING CONSTRUCTION.
- 2" BALL VALVE SHALL BE INSTALLED PER THE DIRECTIONAL ARROW STAMPED ON VALVE BODY. THE DRAIN PORT IS TO DISCHARGE INTO THE WASHED ROCK.
- ALL PEX_a PIPE TO PACK JOINT CONNECTIONS REQUIRE A PIPE STIFFENER.
- FOR SHALLOW INSTALLS AS DETERMINED BY THE DISTRICT, PROVIDE 3" WIDE, BLUE METALLIC WATER DETECTOR TAPE 6"-12" ABOVE PIPE, FROM MAIN TO VALVE BOX.

2" AIR & VACUUM RELIEF VALVE ASSEMBLY

NOT TO SCALE

DETAIL APPROVALS

EDITOR TMC

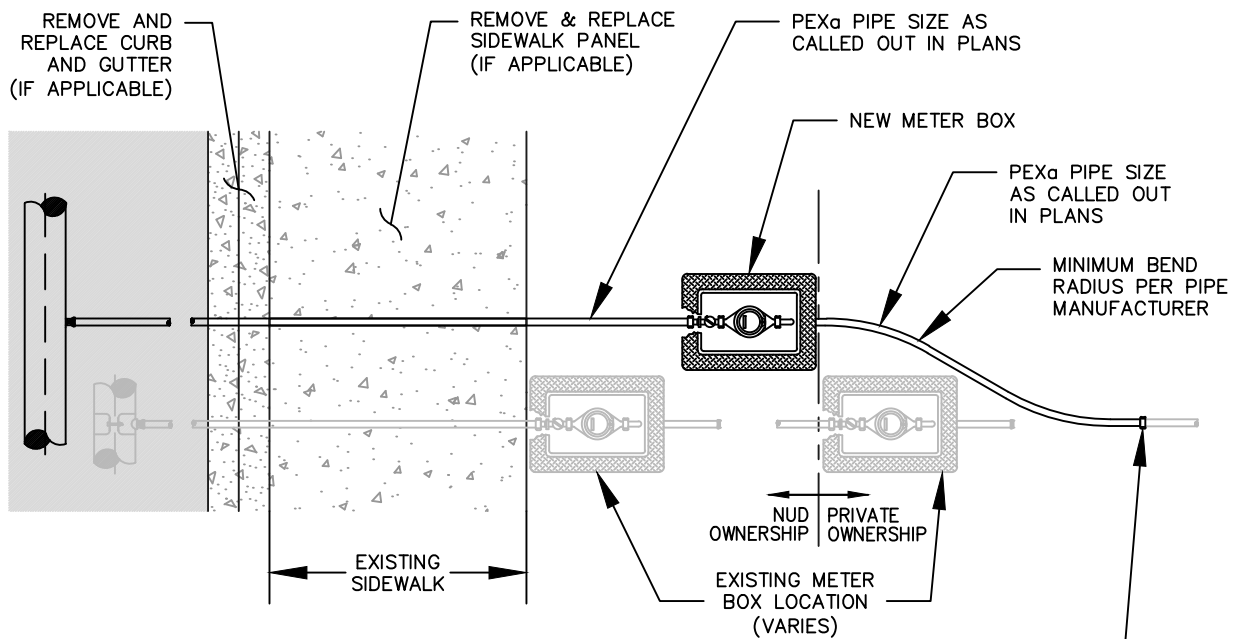
ENG. DIR. CF

NORTHSHORE UTILITY DISTRICT

2025 STANDARD WATER DETAILS

8

LAST UPDATED
MAY 2025



LOCATE AND CONNECT TO EXISTING WATER SERVICE LINE. PROVIDE ALL BRASS INSTA-TITE OR COMPRESSION PACK JOINT STYLE FITTINGS. CONFIRM FITTINGS REQUIRED PRIOR TO DISRUPTING EXISTING WATER SERVICE AND COMMENCING RECONNECTION CONSTRUCTION. SEE NOTE 4.

NOTES:

1. WATER SERVICE PER NUD STANDARD WATER DETAILS, #4 OR #5.
2. NEW METER TO BE RELOCATED AS SHOWN ON PLANS.
3. MEASURE AND RECORD EXISTING WATER PRESSURE AT BUILDING PRIOR TO RECONNECTION AND AFTER REESTABLISHMENT OF SERVICE. IF PRESSURE READINGS DIFFER BY MORE THAN 5 PSI, THE CONTRACTOR SHALL LOCATE AND CORRECT THE ISSUE AT THE PRIVATE PRV. IF A PRIVATE PRV IS REMOVED DURING NEW SERVICE INSTALLATION, ADD A NEW PRV DIRECTLY BEHIND METER BOX.
4. ALL PIPE FITTINGS SHALL BE BRASS. PRIOR TO MAKING THE CONNECTION, THE CONTRACTOR SHALL POT-HOLE THE EXISTING SERVICE LINE TO DETERMINE THE LOCATION, SIZE, AND TYPE OF EXISTING PIPE AND TO CONFIRM THE PIPE AND FITTINGS REQUIRED TO MAKE THE CONNECTION. THE CONTRACTOR SHALL PROVIDE ALL REQUIRED PIPE AND FITTINGS ON-SITE PRIOR TO DISRUPTING WATER SERVICE AND COMMENCING CONSTRUCTION. NO EXISTING WATER SERVICE SHALL BE DISRUPTED FOR MORE THAN TWO HOURS IN ONE DAY.
5. ALL PEXa PIPE TO PACK JOINT CONNECTIONS REQUIRE A STIFFENER INSERT.
6. FLUSH ALL NEW WATER SERVICE PIPING IN THE PRESENCE OF THE DISTRICT.
7. CONTRACTOR TO SALVAGE THE EXISTING METER FOR RE-INSTALLATION INTO THE NEW SERVICE SETTER. REMOVAL AND RE-INSTALLATION OF THE METER TO BE DONE IN THE PRESENCE OF THE DISTRICT. LOCATE AND RECONNECT THE EXISTING SERVICE LINE ON THE BACK OF THE METER. ALL PIGTAIL AND PRIVATE WATER SERVICE CONNECTIONS SHALL BE TESTED AT LINE PRESSURE AND SHALL BE VISUALLY INSPECTED BY THE DISTRICT.
8. REMOVE AND REPLACE EXISTING METER BOX AND SETTER.
9. RESTORE THE SITE TO A CONDITION EQUAL TO OR BETTER THAN EXISTED PRIOR TO CONSTRUCTION.

EXISTING WATER SERVICE RE-CONNECTION

NOT TO SCALE

DETAIL APPROVALS

EDITOR TMC

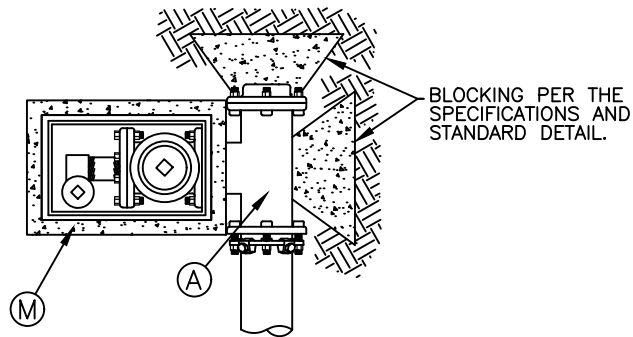
ENG. DIR. CF

NORTHSHORE UTILITY DISTRICT

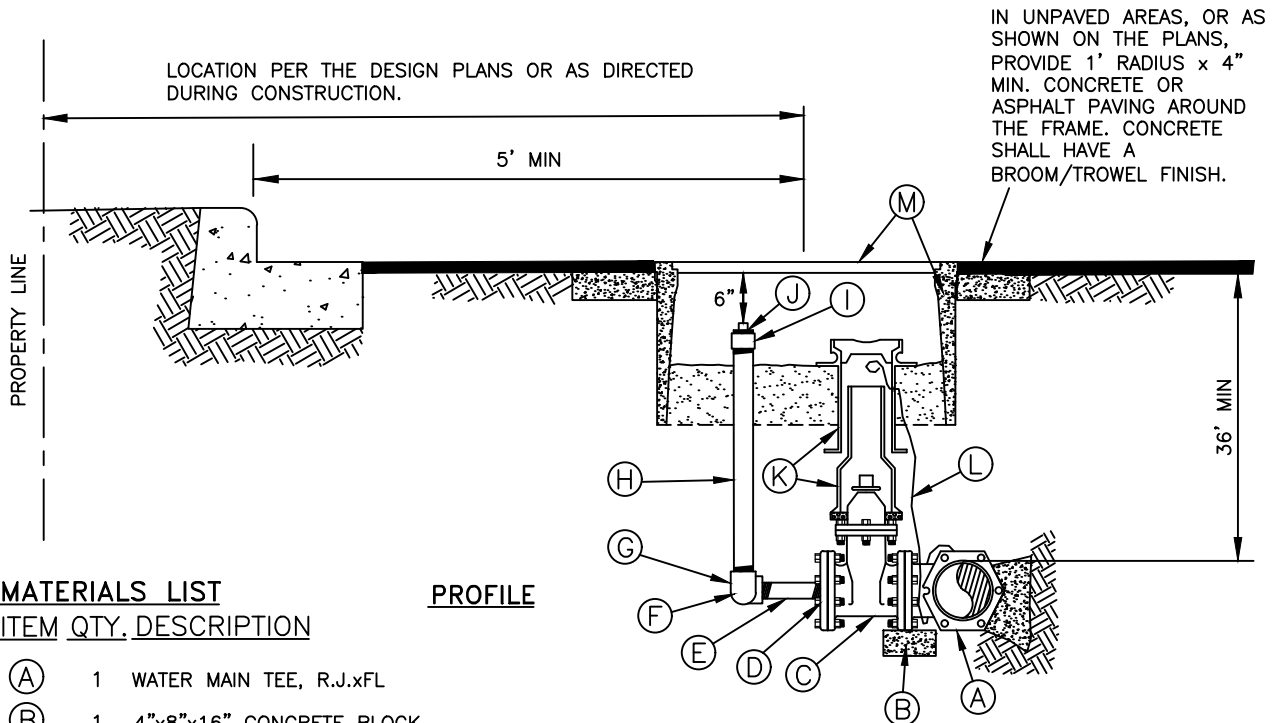
2025 STANDARD WATER DETAILS

9

LAST UPDATED
MAY 2025



PLAN



MATERIALS LIST

ITEM QTY. DESCRIPTION

- (A) 1 WATER MAIN TEE, R.J.xFL
- (B) 1 4"x8"x16" CONCRETE BLOCK.
- (C) 1 4" GATE VALVE, FLxFL.
- (D) 1 4" COMPANION FLANGE WITH 2" IPS TAP.
- (E) 1 2"x4" BRASS PIPE NIPPLE.
- (F) 1 2" 90° BRASS ELBOW, FIPxFIP.
- (G) 1 2" BRASS STREET ELBOW, FIPxMIP
- (H) 1 2" BRASS PIPE, LENGTH TO FIT.
- (I) 1 2" BRASS COUPLING, FIPxFIP.
- (J) 1 2" PVC PLUG.
- (K) 1 TWO-PIECE CAST IRON VALVE BOX AND ETHAFOAM RING PER THE SPECIFICATIONS AND STANDARD WATER DETAIL 11.
- (L) 1 TRACER WIRE: DIRECT BURY BLUE 14 GAUGE COPPER, CONTINUOUS, SOLID CORE, POLYETHYLENE INSULATED WIRE PER THE SPECIFICATIONS. CONTINUOUS FROM MAINLINE.
- (M) 1 ARMORCAST METER BOX, A6001640PCX12-NUD (WITH NO "MOUSE HOLES") AND ARMORCAST COVER, A6001947T-NUD, OR DFW METER BOX, DFW1730CNP4-12-BODY AND DFW COVER DFW1730C-4M-BLANK-NS-NHK-LID.

2" BLOW-OFF ASSEMBLY

NOT TO SCALE

DETAIL APPROVALS

EDITOR TMC

ENG. DIR. CF

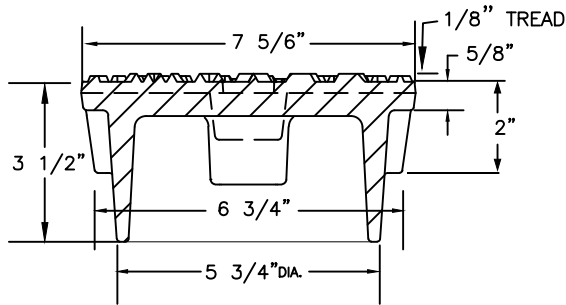
NORTHSHORE UTILITY DISTRICT

2025 STANDARD WATER DETAILS

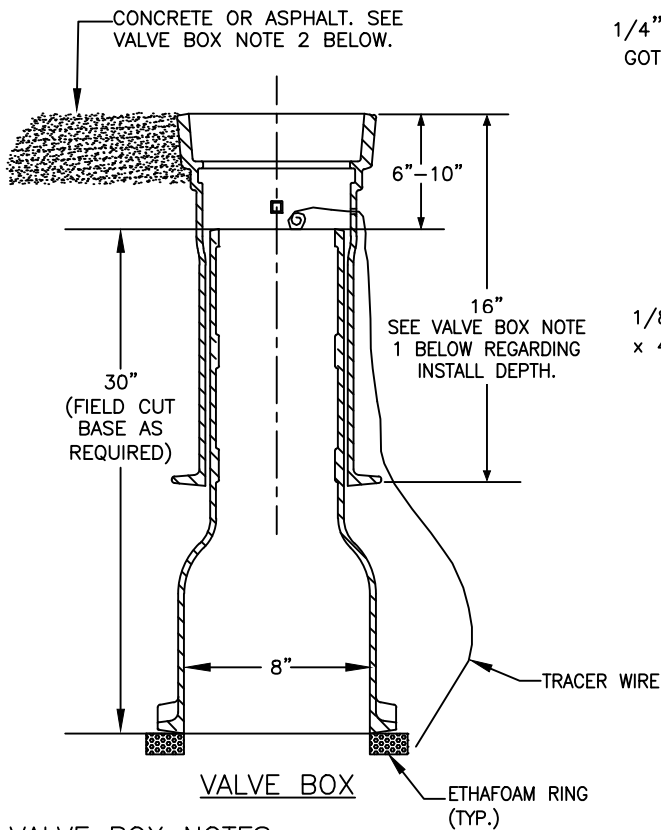
10

LAST UPDATED
MAY 2025

VALVE BOX COVER



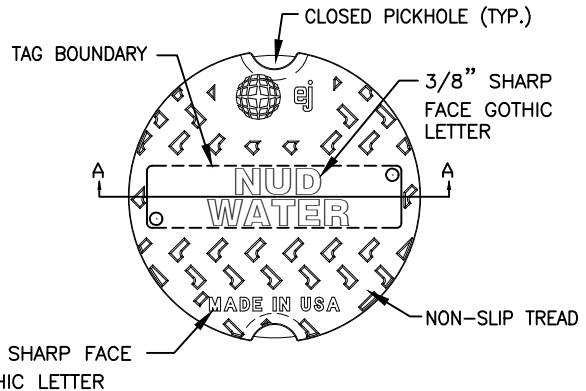
SECTION A-A



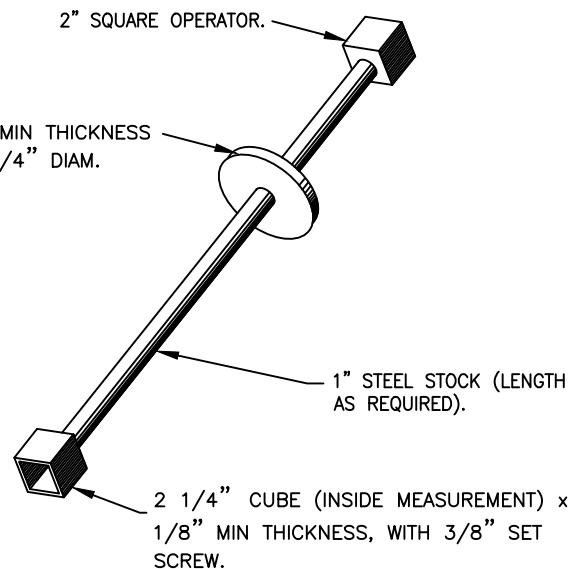
VALVE BOX

VALVE BOX NOTES:

1. CAST-IRON VALVE BOX AND COVER SHALL BE EAST JORDAN IRON WORKS:
 - VALVE BOX COVER 06800209
 - VALVE BOX TOP 85557016U
 - VALVE BOX BOTTOM 85556030U
 FOR SHALLOW OR DEEP INSTALLS, VALVE BOX TOP SHALL BE DETERMINED BY THE DISTRICT.
2. IF VALVE BOX IS IN AN UNPAVED AREA, PROVIDE 1' RADIUS x 4" MINIMUM DEPTH CONCRETE OR ASPHALT PAVING AROUND VALVE BOX. CONCRETE SHALL HAVE A BROOM/TROWEL FINISH.
3. INSTALL ETHAFOAM RING BETWEEN BASE OF VALVE BOX AND GATE VALVES OR ON CONCRETE BRICKS FOR BALL VALVES. ETHAFOAM RING TO BE 2" IN THICKNESS.
4. VALVE TOP TO HAVE A HOLE DRILLED OR SLOT CUT INTO SIDE FOR TRACER WIRE. PROVIDE 12" MIN. OF TRACER WIRE IN VALVE BOX.



PLAN



VALVE OPERATING NUT EXTENSION

VALVE OPERATING NUT EXTENSION NOTES:

1. VALVE OPERATING NUT EXTENSIONS ARE REQUIRED WHEN VALVE NUT IS MORE THAN 5' BELOW FINISHED GRADE.
2. LENGTH AS REQUIRED TO PUT OPERATING NUT TWO (2) FEET FROM FINISHED GRADE.
3. EXTENSIONS TO BE A MINIMUM OF TWO (2) FEET LONG.
4. ONE (1) EXTENSION PER VALVE.
5. NO ADJUSTABLE VALVE EXTENSIONS ALLOWED.
6. WHEN AN EXTENSION IS REQUIRED, USE A SOILS PIPE BETWEEN VALVE BOX TOP AND VALVE BOX BOTTOM. LENGTH TO FIT.

VALVE BOX & OPERATING NUT EXTENSION

NOT TO SCALE

DETAIL APPROVALS

EDITOR TMC

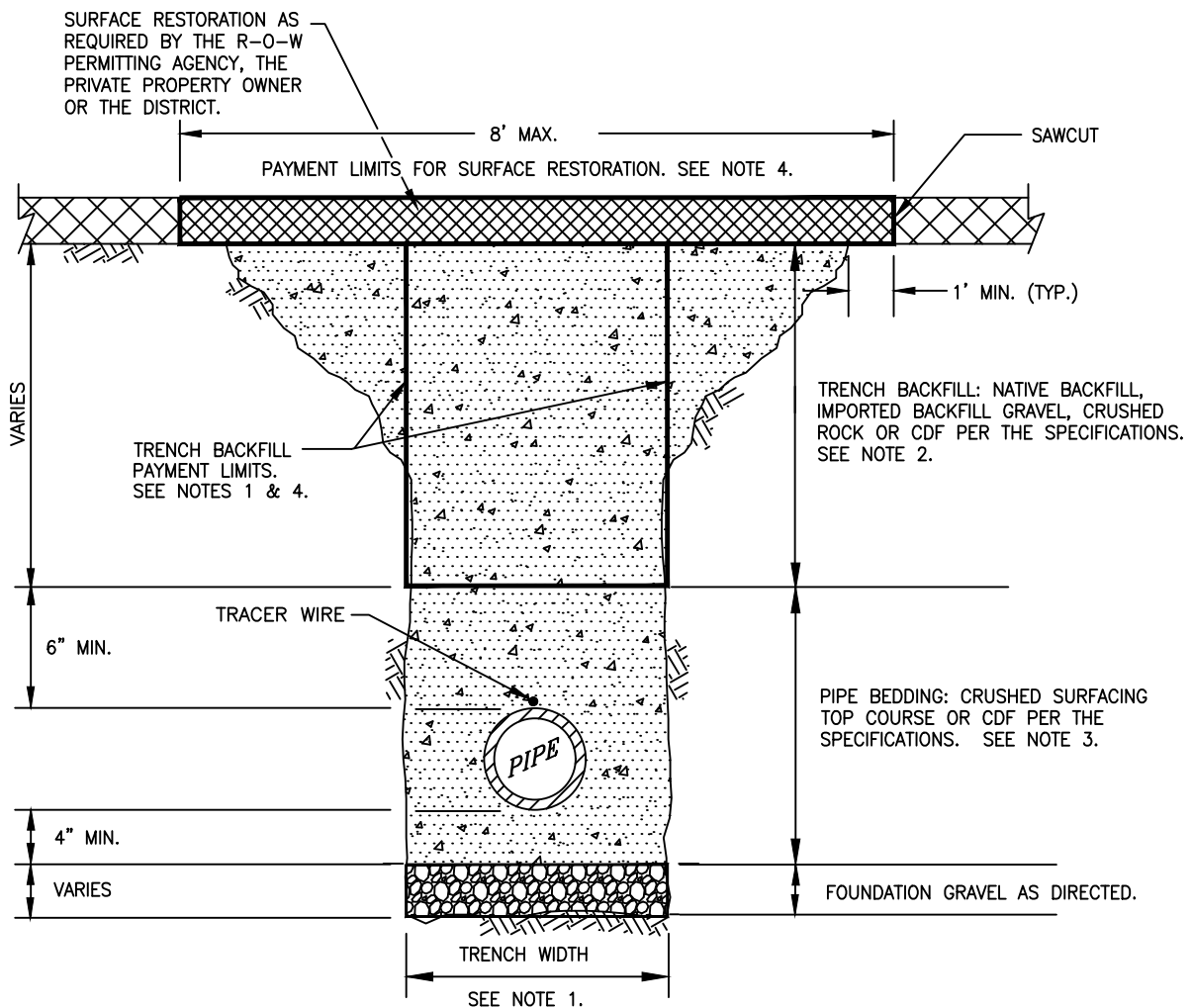
ENG. DIR. CF

NORTHSHORE UTILITY DISTRICT

2025 STANDARD WATER DETAILS

11

LAST UPDATED
MAY 2025



NOTES:

- TRENCH WIDTH:
 MINIMUM: PIPE O.D. + 24" (12" EACH SIDE OF PIPE).
 MAXIMUM: 36" FOR 12"Ø PIPE AND SMALLER.
 48" FOR PIPE LARGER THAN 12"Ø.
 THE NEAT-LINE PAYMENT LIMITS FOR TRENCH BACKFILL MATERIALS SHALL BE BASED UPON THE ACTUAL TRENCH WIDTH WITHIN THE MAXIMUM ALLOWED.
- NATIVE MATERIAL, IF ALLOWED FOR TRENCH BACKFILL, SHALL MEET THE REQUIREMENTS OF SELECT BORROW PER THE SPECIFICATIONS. TRENCH BACKFILL SHALL BE COMPACTED TO A MINIMUM OF NINETY-FIVE PERCENT (95%) OF MODIFIED PROCTOR IN THE RIGHT-OF-WAY AND IMPROVED EASEMENTS AND TO NINETY PERCENT (90%) IN UNIMPROVED EASEMENT AREAS. SEE THE SPECIFICATIONS FOR ADDITIONAL INFORMATION.
- NATIVE MATERIAL WILL NOT BE ALLOWED AS PIPE BEDDING.
- THE NEAT-LINE LIMITS SHOWN WILL BE USED TO CALCULATE THE MAXIMUM QUANTITY OF TRENCH BACKFILL AND SURFACE RESTORATION MATERIALS ALLOWED. PAYMENT FOR BEDDING GRAVEL WILL BE CONSIDERED INCIDENTAL TO PAYMENT MADE FOR PIPE. PAYMENT FOR FOUNDATION ROCK WILL BE BASED UPON THE QUANTITIES USED AS DIRECTED BY THE DISTRICT. ADDITIONAL TRENCH WIDTH IS ALLOWED AT FITTINGS AND THRUSTBLOCKS. SEE THE CONTRACT DOCUMENTS FOR ADDITIONAL INFORMATION.
- RECYCLED CONCRETE WILL NOT BE ALLOWED AS PIPE BEDDING OR TRENCH BACKFILL.
- TRACER WIRE TO BE SECURED TO THE TOP OF THE PIPE USING TAPE OR WIRE TIES. LOOSE TRACER WIRE OR TRACER WIRE SECURED TO SIDE OF PIPE IS NOT ALLOWED.

TYPICAL TRENCH SECTION & PAYMENT LIMITS

NOT TO SCALE

DETAIL APPROVALS

EDITOR *TMC*

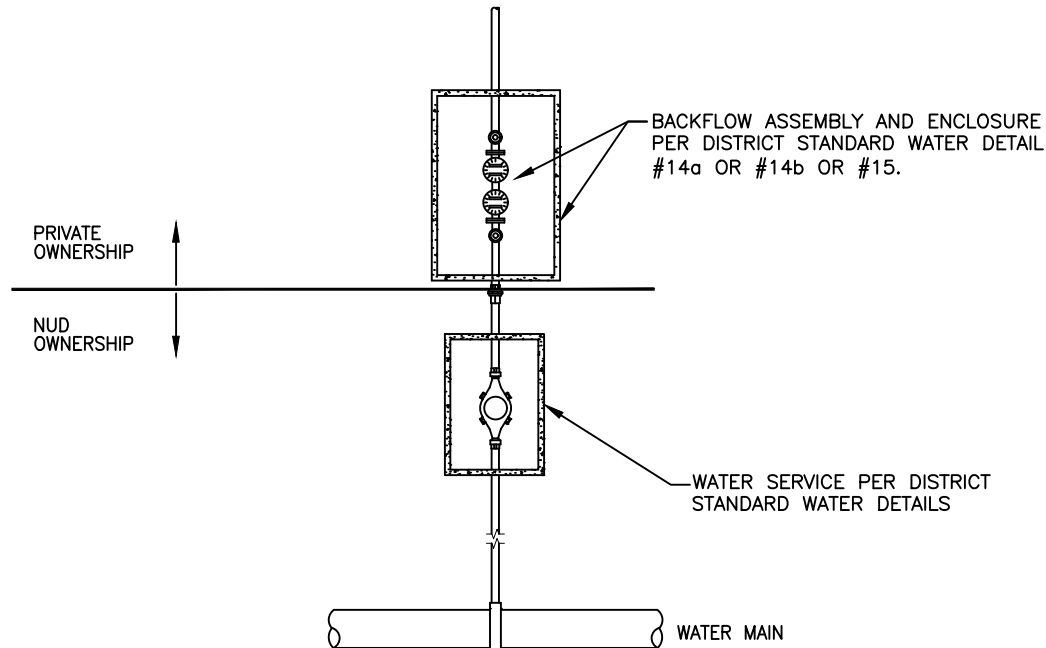
ENG. DIR. *CF*

NORTHSHORE UTILITY DISTRICT

2025 STANDARD WATER DETAILS

12

LAST UPDATED
MAY 2025



PLAN

NOTES :

1. INSTALLATION OF BACKFLOW ASSEMBLIES ARE TO PROTECT THE PUBLIC WATER SYSTEM AND SHALL BE INSTALLED IF ANY OF THE FOLLOWING EXIST:
 - IRRIGATION SYSTEMS
 - NON-FLOW THROUGH FIRE SPRINKLER SYSTEMS
 - IF THE STRUCTURE IS 3 ASCENDING FLOORS
 - OR AS DETERMINED BY THE DISTRICT
 2. THE PREMISE ISOLATION BACKFLOW ASSEMBLY USED, EITHER A DOUBLE CHECK VALVE ASSEMBLY (DCVA) OR REDUCED PRESSURE BACKFLOW ASSEMBLY (RPBA), SHALL MEET WAC 246-290-490 "CROSS-CONNECTION CONTROL" AND BE AN APPROVED BACKFLOW ASSEMBLY AS SHOWN ON THE WASHINGTON STATE APPROVAL LISTING.
 3. THE BACKFLOW ASSEMBLY SHALL BE INSTALLED IMMEDIATELY BEHIND THE WATER METER, WITH NO MORE THAN 1'-2' BETWEEN BOXES. INSTALLATION OF THE BACKFLOW ASSEMBLY INTERNAL TO THE BUILDING WILL NOT BE ALLOWED. THE MINIMUM LEVEL OF PROTECTION AT METER SHALL BE EQUIVALENT TO OR EXCEED THE HIGHEST LEVEL OF PROTECTION REQUIRED INSIDE THE BUILDING.
 4. FOLLOWING THE INSTALLATION OF THE WATER METER, THE DISTRICT WILL LEAVE THE WATER SERVICE PADLOCKED UNTIL NOTIFIED 24 HOURS IN ADVANCE BY THE OWNER/ INSTALLER THAT THE BACKFLOW ASSEMBLY IS READY TO BE TESTED. AFTER THE 24 HOUR UNLOCK FOR BACKFLOW TESTING, THE DISTRICT WILL RE-LOCK THE WATER SERVICE UNLESS A PASSING BACKFLOW TEST IS RECEIVED BY THE DISTRICT.
 5. THE BACKFLOW ASSEMBLY TEST SHALL BE PERFORMED BY A CERTIFIED WASHINGTON STATE BACKFLOW ASSEMBLY TESTER. FOR A LIST OF CERTIFIED TESTERS, PLEASE VISIT [HTTPS://WCS.GREENRIVER.EDU/BAT/HIRE-A-BAT/](https://wcs.greenriver.edu/bat/hire-a-bat/) AND USE THE DROP DOWN LIST UNDER "VIEW THE HIRE A BAT LIST".
- FOR ALL NEWLY INSTALLED ASSEMBLIES, A DIGITAL COPY OF THE TEST REPORT SHALL BE SUBMITTED DIRECTLY TO NORTHSORE UTILITY DISTRICT AT BACKFLOW@NUD.NET.
6. THE BACKFLOW ASSEMBLY IS TO BE TESTED AND A REPORT SUBMITTED TO THE DISTRICT:
 - AT INSTALLATION
 - ANNUALLY
 - AFTER ANY REPAIR
 - AFTER ANY FAILED REPORT
 - AFTER ANY RELOCATION OF THE BACKFLOW ASSEMBLY
 7. FOR ALL PROPERTIES REQUIRING FIRE SPRINKLERS, THE APPLICANT'S FIRE PROTECTION SYSTEM DESIGNER SHALL SIZE THE WATER METER AND WATER SERVICE SUPPLY LINES. FLOW THROUGH SYSTEMS DO NOT REQUIRE PREMISE ISOLATION BUT MUST USE POTABLE WATER/NSF RATED MATERIALS AND TERMINATE AT THE FURTHEST REGULARLY USED FIXTURE.
 8. FOR ALL PROPERTIES REQUIRING IRRIGATION SYSTEMS, THE APPLICANT'S IRRIGATION SYSTEM DESIGNER SHALL SIZE THE WATER METER AND WATER SERVICE SUPPLY LINES.

PREMISE ISOLATION

NOT TO SCALE

DETAIL APPROVALS

EDITOR TMC

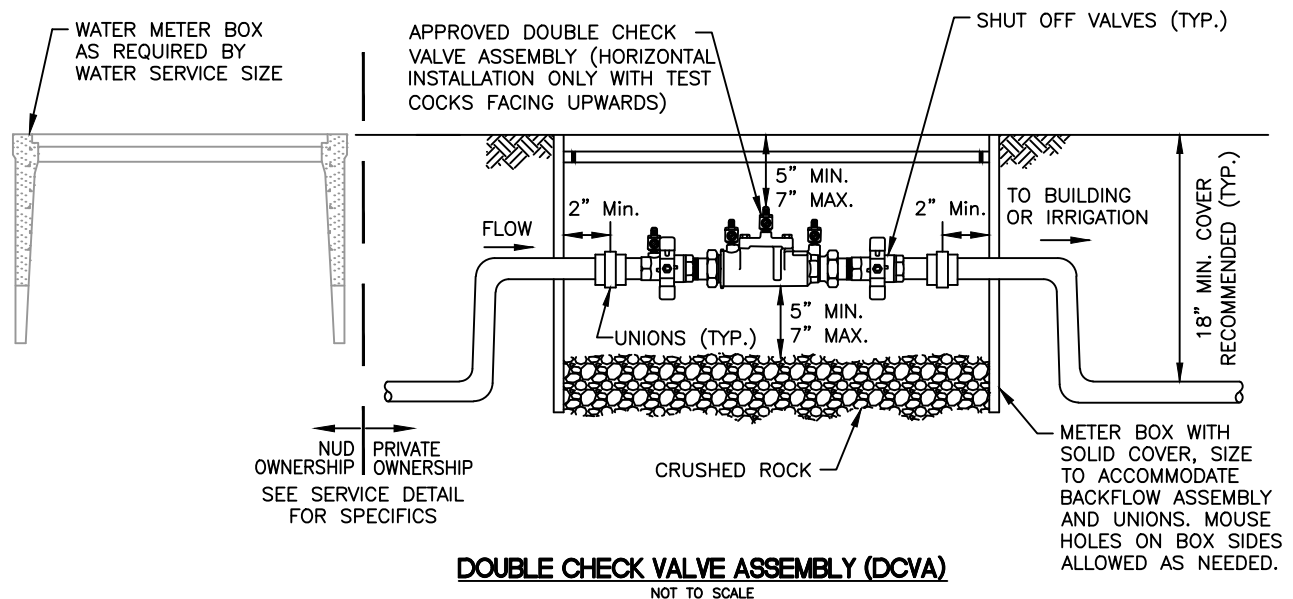
ENG. DIR. CF

NORTHSORE UTILITY DISTRICT

2025 STANDARD WATER DETAILS

13

LAST UPDATED
MAY 2025



NOTES:

1. THE BACKFLOW ASSEMBLY SHALL BE AN APPROVED ASSEMBLY AS SHOWN ON THE WASHINGTON STATE APPROVAL LISTING PER WASHINGTON ADMINISTRATIVE CODE (WAC) 246-290. THE ASSEMBLY MUST BE PURCHASED AND INSTALLED AS A UNIT, NO MODIFICATIONS ARE ALLOWED TO ANY PART OF THE ASSEMBLY.
2. BACKFLOW ASSEMBLY SHALL BE CENTERED WITHIN THE ENCLOSURE WITH THE TEST COCKS FACING UPWARDS. TEST COCKS MUST BE COVERED WITH SEATED CAPS. THE ASSEMBLY ENCLOSURE SHALL PROVIDE MINIMUM HORIZONTAL AND VERTICAL CLEARANCE AS SHOWN AND REQUIRED.
3. THE BACKFLOW ASSEMBLY SHALL BE INSTALLED IMMEDIATELY BEHIND THE WATER METER, PRIOR TO ANY BRANCH CONNECTIONS, WITH NO MORE THAN 1'-2' BETWEEN BOXES. INSTALLATION OF THE BACKFLOW ASSEMBLY INTERNAL TO THE BUILDING WILL NOT BE ALLOWED. THE MINIMUM LEVEL OF PROTECTION AT METER SHALL BE EQUIVALENT TO OR EXCEED THE HIGHEST LEVEL OF PROTECTION REQUIRED INSIDE THE BUILDING.
4. THE BACKFLOW ASSEMBLY TEST SHALL BE PERFORMED BY A CERTIFIED WASHINGTON STATE BACKFLOW ASSEMBLY TESTER. FOR A LIST OF CERTIFIED TESTERS, PLEASE VISIT [HTTPS://WCS.GREENRIVER.EDU/BAT/HIRE-A-BAT/](https://wcs.greenriver.edu/bat/hire-a-bat/) AND USE THE DROP DOWN LIST UNDER "VIEW THE HIRE A BAT LIST".

FOR ALL NEWLY INSTALLED ASSEMBLIES, A DIGITAL COPY OF THE TEST REPORT SHALL BE SUBMITTED DIRECTLY TO NORTHSORE UTILITY DISTRICT AT BACKFLOW@NUD.NET.

5. THE BACKFLOW ASSEMBLY IS TO BE TESTED AND A REPORT SUBMITTED TO THE DISTRICT:
 - AT INSTALLATION
 - ANNUALLY
 - AFTER ANY REPAIR
 - AFTER ANY FAILED REPORT
 - AFTER ANY RELOCATION OF THE BACKFLOW ASSEMBLY
6. BOXES LOCATED IN ANY AREAS INTENDED FOR VEHICULAR USE ARE TO BE TRAFFIC RATED.

DOUBLE CHECK VALVE ASSEMBLY (DCVA) GENERAL INSTALLATION GUIDELINES

NOT TO SCALE

DETAIL APPROVALS

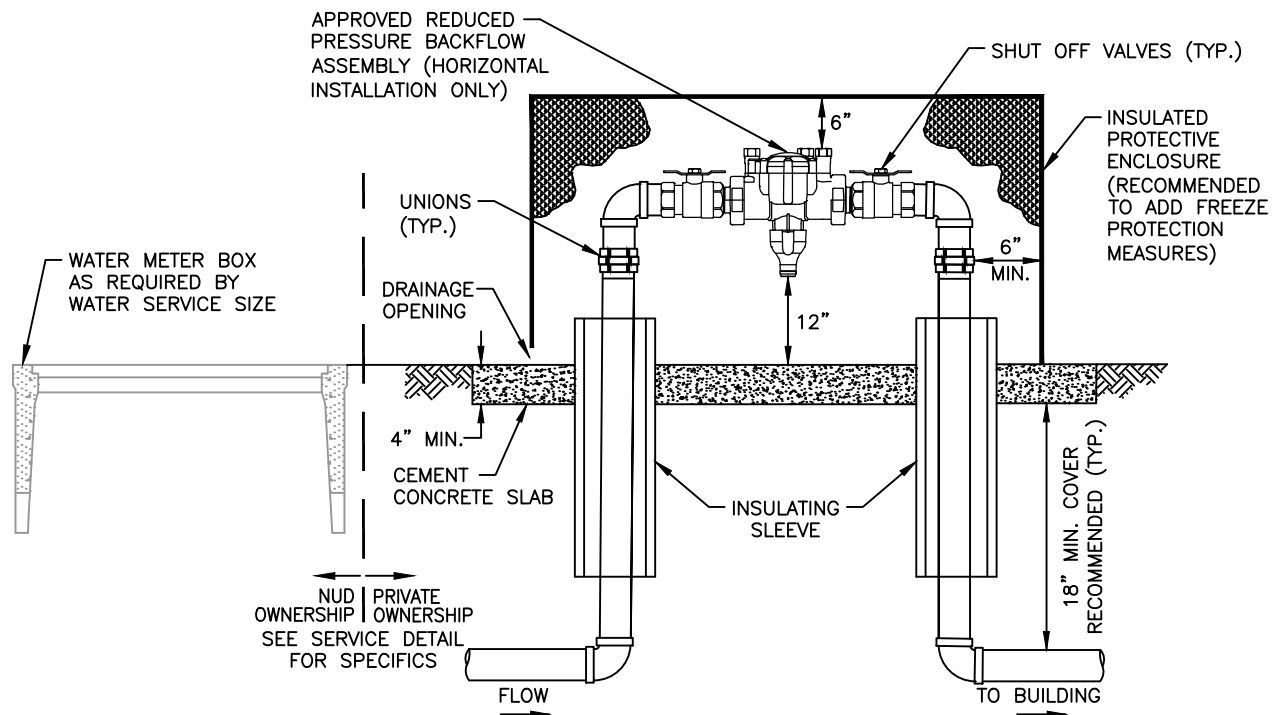
EDITOR TMC

ENG. DIR. CF

NORTHSORE UTILITY DISTRICT
2025 STANDARD WATER DETAILS

14a

LAST UPDATED
MAY 2025



REDUCED PRESSURE BACKFLOW ASSEMBLY (RPBA)

NOT TO SCALE

NOTES:

- REDUCED PRESSURE BACKFLOW ASSEMBLIES ARE REQUIRED FOR CONNECTIONS WITH "SEVERE AND HIGH HEALTH CROSS-CONNECTION HAZARDS" AS LISTED IN TABLE 13 OF WASHINGTON ADMINISTRATIVE CODE (WAC) 246-290-490, OR AS DETERMINED BY THE DISTRICT.
- THE BACKFLOW ASSEMBLY SHALL BE AN APPROVED ASSEMBLY AS SHOWN ON THE WASHINGTON STATE APPROVAL LISTING. THE ASSEMBLY MUST BE PURCHASED AND INSTALLED AS A UNIT, NO MODIFICATIONS ARE ALLOWED TO ANY PART OF THE ASSEMBLY.
- THE BACKFLOW ASSEMBLY SHALL BE INSTALLED IMMEDIATELY BEHIND THE WATER METER, PRIOR TO ANY BRANCH CONNECTIONS, WITH NO MORE THAN 1'-2' BETWEEN BOXES. INSTALLATION OF THE BACKFLOW ASSEMBLY INTERNAL TO THE BUILDING WILL NOT BE ALLOWED. THE MINIMUM LEVEL OF PROTECTION AT METER SHALL BE EQUIVALENT TO OR EXCEED THE HIGHEST LEVEL OF PROTECTION REQUIRED INSIDE THE BUILDING.
- BACKFLOW ASSEMBLY SHALL BE CENTERED WITHIN THE ENCLOSURE AND PROVIDE MINIMUM HORIZONTAL AND VERTICAL CLEARANCE AS REQUIRED.
- BACKFLOW ASSEMBLY SHALL NOT BE INSTALLED BELOW GRADE IN ANY WAY INCLUDING IN A VAULT, TRENCH, OR DITCH. OWNER TO ENSURE THAT BACKFLOW ASSEMBLY IS PROTECTED FROM FREEZING.
- THE BACKFLOW ASSEMBLY TEST SHALL BE PERFORMED BY A CERTIFIED WASHINGTON STATE BACKFLOW ASSEMBLY TESTER. FOR A LIST OF CERTIFIED TESTERS, PLEASE VISIT [HTTPS://WCS.GREENRIVER.EDU/BAT/HIRE-A-BAT/](https://wcs.greenriver.edu/bat/hire-a-bat/) AND USE THE DROP DOWN LIST UNDER "VIEW THE HIRE A BAT LIST".

FOR ALL NEWLY INSTALLED ASSEMBLIES, A DIGITAL COPY OF THE TEST REPORT SHALL BE SUBMITTED DIRECTLY TO NORTHSORE UTILITY DISTRICT AT BACKFLOW@NUD.NET.

- THE BACKFLOW ASSEMBLY IS TO BE TESTED AND A REPORT SUBMITTED TO THE DISTRICT:
 - AT INSTALLATION
 - ANNUALLY
 - AFTER ANY REPAIR
 - AFTER ANY FAILED REPORT
 - AFTER ANY RELOCATION OF THE BACKFLOW ASSEMBLY

REDUCED PRESSURE BACKFLOW ASSEMBLY (RPBA) GENERAL INSTALLATION GUIDELINES

NOT TO SCALE

DETAIL APPROVALS

EDITOR TMC

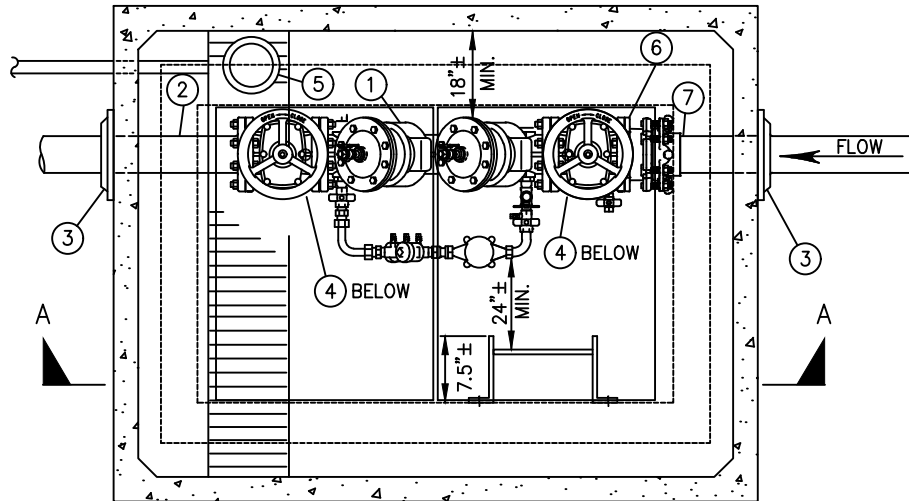
ENG. DIR. CF

NORTHSORE UTILITY DISTRICT

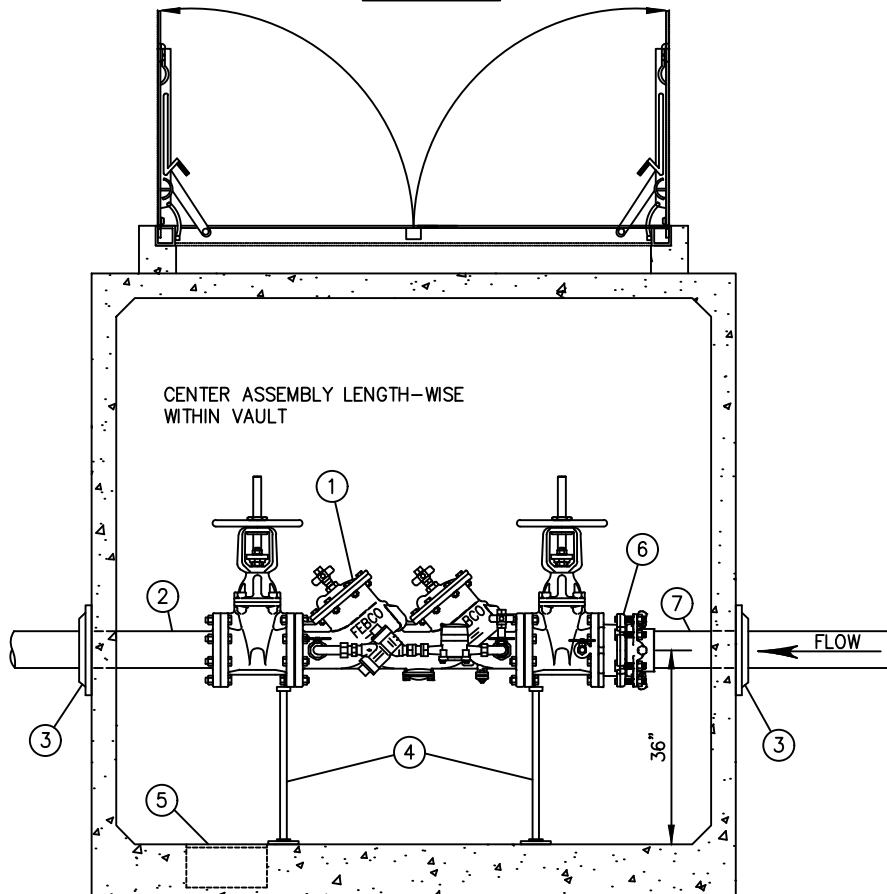
2025 STANDARD WATER DETAILS

14b

LAST UPDATED
MAY 2025



PLAN VIEW



SECTION A-A

NOTES:

1. SEE NUD STANDARD WATER DETAIL #15A FOR MATERIALS LIST AND ADDITIONAL NOTES.
2. SEE NUD STANDARD WATER DETAIL #16 AND #16A FOR VAULT DETAILS.

2 1/2" - 8" DOUBLE CHECK DETECTOR ASSEMBLY (DCDA)

NOT TO SCALE

DETAIL APPROVALS

EDITOR *TMC*

ENG. DIR. *CF*

NORTHSHORE UTILITY DISTRICT

2025 STANDARD WATER DETAILS

15

LAST UPDATED
MAY 2025

MATERIALS LIST: ALL PIPING AND APPURTENANCES TO MATCH DCDA SIZE

ITEM QTY. DESCRIPTION

- ① 1 DOUBLE CHECK DETECTOR ASSEMBLY SHALL BE FEBCO MODEL 856, WILKINS MODEL 350 DA, WATTS SERIES 757 DCDA, OR DISTRICT APPROVED EQUAL MEETING THE AWWA STANDARD C-510 AND BE WASHINGTON STATE APPROVED. TEST COCKS SHALL BE CAPPED WITH PLASTIC CAPS. BYPASS METER TO BE BADGER, M35 SHORT.
- ② 1 D.I. SPOOL, FL x PE, 5'± LONG.
- ③ 2 UNI-FLANGE ADAPTER.
- ④ 2 ADJUSTABLE PIPING SUPPORT, STANDON MODEL #S89, OR EQUAL.
- ⑤ 1 SUMP PUMP OR GRAVITY DRAIN AS REQUIRED BY SITE CONDITIONS, TO BE DETERMINED BY THE DEVELOPER AND CONTRACTOR AND REVIEWED AND APPROVED BY THE DISTRICT.

FOR GRAVITY: SUMP DRAIN, ZURN Z-551, THREADED, WITH ZURN Z-1099 BACKWATER VALVE, THREADED x NO-HUB, WITH 4" D.I. PIPE TO 12" MIN. BEYOND VAULT WALL AND 4" D.I., MIN. 1% SLOPE TO DAYLIGHT OR C.B.

FOR SUMP PUMP: 16" DIAM. x 8" DEEP SUMP WITH ZOELLER MODEL 57 SUMP PUMP WITH SOLID BUOYANT POLYPROPYLENE FLOAT. PROVIDE ELECTRICAL POWER WITHIN 4' MIN.-6' MAX. VERTICAL DISTANCE AND 1' MAX. HORIZONTAL DISTANCE TO SUMP PUMP PER ALL APPLICABLE CODES. CONSTRUCT 1-1/4", SCH. 80 PVC DISCHARGE PIPING, WITH LOCATE WIRE, TO NEAREST CATCH BASIN OR APPROVED LOCATION. DISCHARGE PIPING SHALL BE ATTACHED TO THE INTERIOR VAULT WALL WITH APPROVED FASTENERS AT 3' SPACING. INSTALL A QUICK DISCONNECT COUPLING, CHECK VALVE, AND ISOLATION BALL VALVE ON DISCHARGE PIPING IMMEDIATELY AFTER SUMP PUMP. SEE STANDARD WATER DETAIL #16A FOR PUMP AND PIPING DETAIL.

- ⑥ 1 FLANGED COUPLING ADAPTER TO BE ROMAC FLANGED COUPLING ADAPTER, STYLE RFCA.
- ⑦ 1 D.I. SPOOL, CUT TO FIT

NOTES:

1. PROVIDE SHOP DRAWINGS AND SUBMITTALS FOR ALL MATERIALS TO THE DISTRICT FOR REVIEW AND APPROVAL PRIOR TO CONSTRUCTION.
2. DOUBLE CHECK DETECTOR ASSEMBLY AND ALL PIPING SHALL BE SIZED BY A LICENSED FIRE SPRINKLER ENGINEER/CONTRACTOR.
3. VAULT SHALL BE UTILITY VAULT 687-LA (8'L x 6'W x 7'D; INSIDE DIMENSION). SEE DISTRICT STANDARD DETAIL #S 16 AND 16a FOR VAULT DETAIL.
4. ALL PIPE AND CONDUIT PENETRATIONS SHALL BE CORE-DRILLED ON-SITE AND SHALL BE SEALED WATERTIGHT. PROVIDE "LINK-SEAL" FITTINGS AT ALL PENETRATIONS.
5. ALL PIPING AND APPURTENANCES OUTSIDE THE VAULT SHALL BE RESTRAINED JOINT. IN ADDITION TO THE RESTRAINED JOINTS, THRUST BLOCKING AT ALL TEES AND BENDS PER DISTRICT STANDARD WATER DETAIL #S 1 AND 2 SHALL BE REQUIRED.
6. THE CONTRACTOR IS RESPONSIBLE FOR ELECTRICAL PERMITS AND APPROVALS FOR SUMP PUMP INSTALLATIONS.
7. THE DCDA SHALL BE INSTALLED OUTSIDE OF THE BUILDING IN A VAULT PER DISTRICT STANDARD DETAIL #S 16 AND 16A. INSTALLATION OF THE DCDA INTERNAL TO THE BUILDING WILL NOT BE ALLOWED UNLESS APPROVED BY THE DISTRICT (SITE SPECIFIC CONDITIONS OR CONSTRAINTS WILL BE CONSIDERED FOR ALTERNATE LOCATION OF THE DCDA).
8. NUD'S OWNERSHIP WILL BE TO THE UPSTREAM EDGE OF THE VAULT, OR IF THE DCDA IS ALLOWED WITHIN A STRUCTURE, UP TO THE FACE OF THE BUILDING.

2 1/2" - 8" DOUBLE CHECK DETECTOR ASSEMBLY (DCDA)

NOT TO SCALE

DETAIL APPROVALS

EDITOR TMC

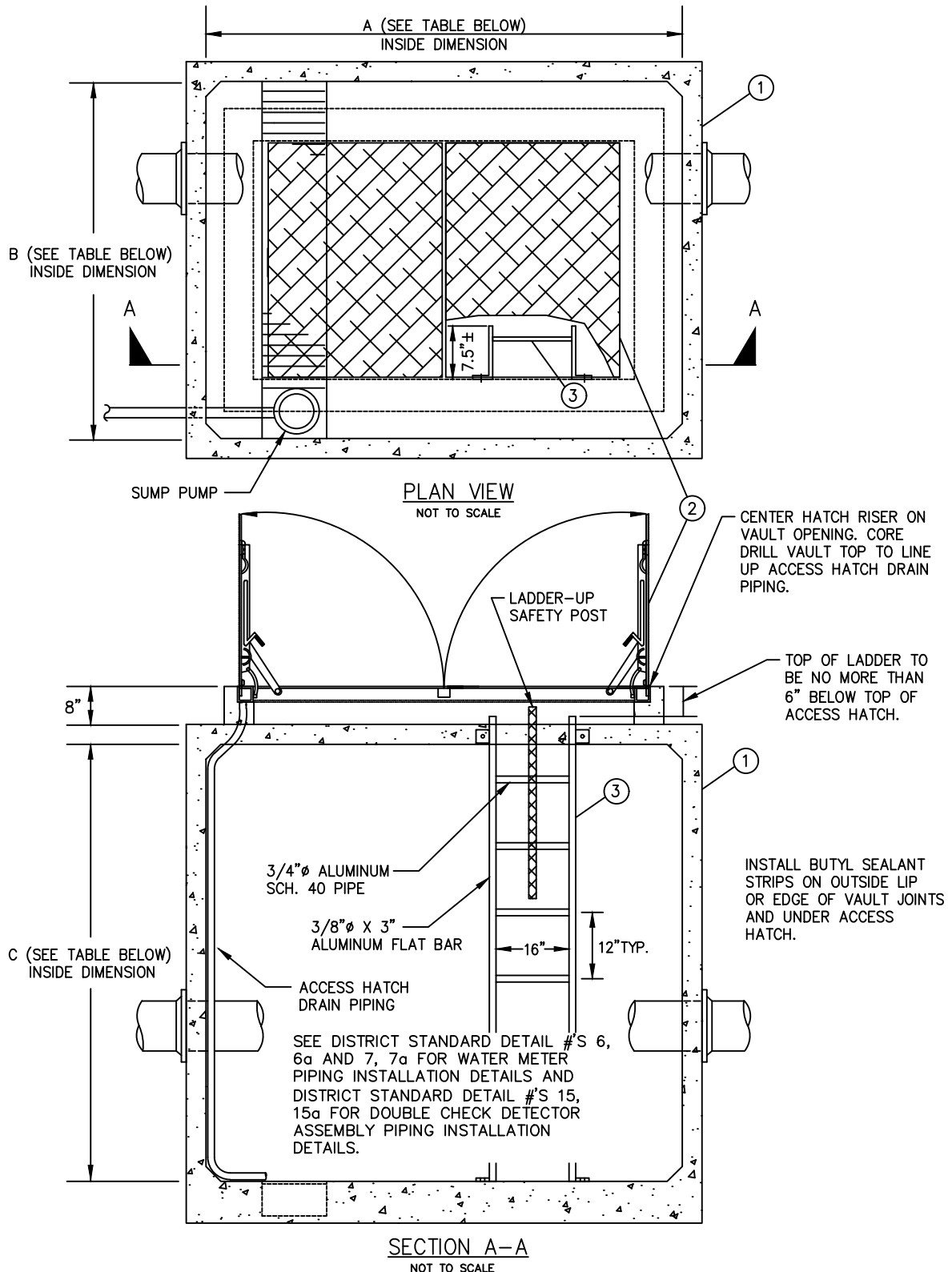
ENG. DIR. CF

NORTHSHORE UTILITY DISTRICT

2025 STANDARD WATER DETAILS

15a

LAST UPDATED
MAY 2025



NOTES:

1. SEE NUD STANDARD WATER DETAIL #16A FOR SUMP PUMP DETAIL.
2. SEE NUD STANDARD WATER DETAIL #16A FOR MATERIALS LIST AND ADDITIONAL NOTES.

VAULT DETAIL

NOT TO SCALE

Vault	Dimension			Use
	A	B	C	
687-LA	8'	6'	7'	3" & 4" Meters, DCDA's
810-LA	10'	8'	7'	6" Meters

DETAIL APPROVALS

EDITOR *TMC*

ENG. DIR. *DPK*

NORTHSHORE UTILITY DISTRICT

2025 STANDARD WATER DETAILS

16

LAST UPDATED
FEBRUARY 2019

MATERIALS LIST:

ITEM DESCRIPTION

- ① PRECAST CONCRETE UNDERGROUND VAULT SHALL BE 687-LA FOR 3" AND 4" METERS AND DCDA'S, OR 810-LA FOR 6" METERS, MANUFACTURED BY "UTILITY VAULT COMPANY/OLDCASTLE PRECAST".
BASE SECTION: 687-BL OR 810-SB WITH FULL-WIDTH SUMP AND GRATE.
CENTER SECTION: 687-ML OR 810-ML
TOP SECTION: 687 OR 810 WITH 48"x72" HATCH OPENINGS LOCATED AS SHOWN TO ACCOMMODATE THE CONCRETE COVER, NO. 57 CLX 42S, AND THE 48"x72" DOUBLE LEAF HATCH. CORE DRILL CONCRETE TOP SECTION OF VAULT TO ALIGN WITH ACCESS HATCH DRAIN AND INSTALLATION OF 1-1/2" ACCESS HATCH DRAIN PIPING.

ALL VAULT WALLS SHALL BE SOLID FULL WIDTH WITH NO KNOCK-OUTS OR CHANNELS. THE VAULT MANUFACTURER SHALL ENSURE THAT NO VAULT JOINTS ARE LOCATED WITHIN 6" OF THE EDGE OF CORE-DRILLED PENETRATIONS. SEE NOTES BELOW.

INSTALL BUTYL SEALANT STRIPS BETWEEN VAULT SECTIONS AND UNDER ACCESS HATCH PER MANUFACTURER'S RECOMMENDATIONS AND ENSURE THAT SEALANT IS NOT SQUEEZED INTO VAULT.

PAINTING:
CONCRETE TO DRY FOR 9 DAYS PRIOR TO COATING APPLICATION. SURFACE IS TO BE CLEAN, DRY AND FREE OF CONTAMINANTS.

THE INTERIOR OF THE CONCRETE VAULT SHALL BE PAINTED AT THE VAULT MANUFACTURER WITH ONE COAT OF TNEPEC SERIES N69 HI-BUILD EPOXOLINE II, APPLIED AT 6-8 MILS DFT, COLOR TO BE WHITE.

EXTERIOR BELOW GRADE OF THE CONCRETE VAULT SHALL BE PAINTED WITH ONE COAT TNEPEC SERIES 46H-413 HI-BUILD TNEPE-TAR COAL TAR EPOXY, APPLIED AT 16 TO 20 MILS DFT.

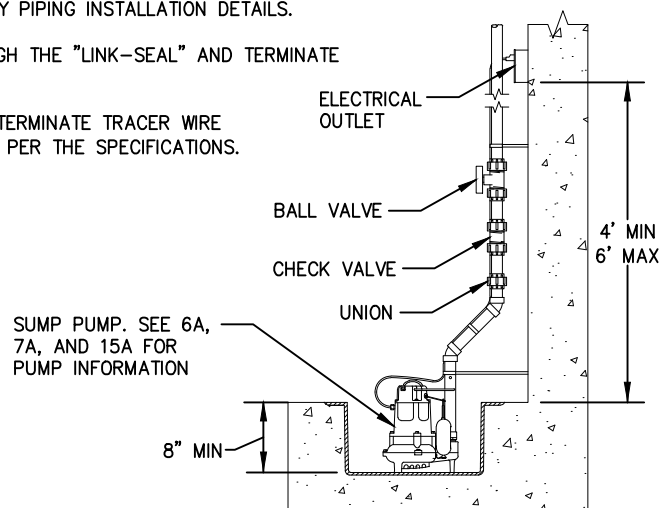
TO FIELD REPAIR ANY DAMAGED COATING, CONTRACTOR SHALL LIGHTLY SAND SURFACE WITH 150 GRIT SAND PAPER TO DEGLOSS AREA TO BE RE-COATED. REAPPLY PAINT PER THE DATA SHEET FOR THE SPECIFIED MATERIAL.

② ACCESS HATCH: "UTILITY VAULT" CONCRETE COVER NO. 57 CLX 42S WITH "LW PRODUCTS" 48"x72" DOUBLE LEAF HATCH. HATCH SHALL BE H-30 RATED PART #HHD-3C FOR LOCATIONS IN TRAFFIC, H-20 RATED PART #HD-3C FOR ALL OTHER LOCATIONS. PROVIDE 1-1/2" SCH. 80 CONDUIT FROM HATCH GUTTER TO VAULT SUMP SECURED TO VAULT WALL WITH APPROVED FASTENERS AT 3' SPACING.

③ ALUMINUM LADDER BOLTED TO VAULT BASE AND HATCH RISER WITH SS HARDWARE. LADDER TO INCLUDE BILCO "LADDER-UP" SAFETY POST.

NOTES:

1. PROVIDE SHOP DRAWINGS AND SUBMITTALS FOR ALL MATERIALS TO THE DISTRICT FOR REVIEW AND APPROVAL PRIOR TO CONSTRUCTION.
2. VAULTS FOR WATER METERS AND DOUBLE CHECK DETECTOR ASSEMBLIES 8" AND LARGER WILL BE DETERMINED BY THE DISTRICT AT THE TIME OF PLAN REVIEW.
3. PIPE AND CONDUIT PENETRATIONS SHALL BE CORE-DRILLED ON-SITE AND SHALL BE SEALED WATERTIGHT. PROVIDE "LINK-SEAL" FITTINGS AT ALL PENETRATIONS.
4. SEE DISTRICT STANDARD DETAIL #S 6, 6a AND 7, 7a FOR WATER METER PIPING INSTALLATION DETAILS AND DISTRICT STANDARD DETAIL #S 15, 15a FOR DOUBLE CHECK DETECTOR ASSEMBLY PIPING INSTALLATION DETAILS.
5. TRACER WIRE ON MAINLINE SHALL ENTER THE VAULT THROUGH THE "LINK-SEAL" AND TERMINATE 6" INSIDE VAULT.
6. SUMP PUMP DISCHARGE LINE SHALL HAVE A TRACER WIRE. TERMINATE TRACER WIRE INSIDE OF VAULT, 6" FROM LINK-SEAL. TRACER WIRE TO BE PER THE SPECIFICATIONS.



VAULT DETAIL

NOT TO SCALE

SUMP PUMP DETAIL

NOT TO SCALE

DETAIL APPROVALS

EDITOR TMC

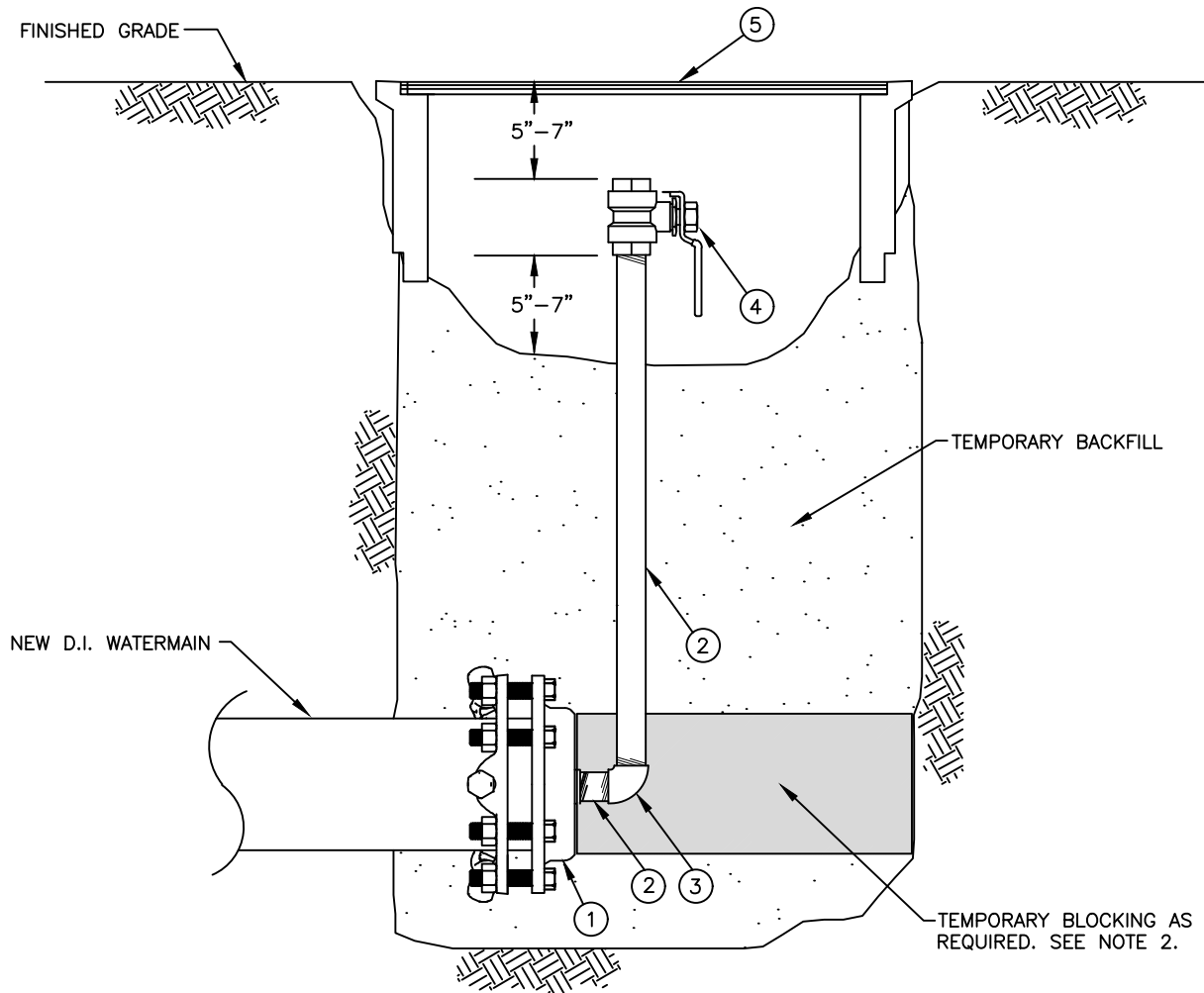
ENG. DIR. CF

NORTHSHORE UTILITY DISTRICT

2025 STANDARD WATER DETAILS

16a

LAST UPDATED
MAY 2025



MATERIALS LIST

ITEM QTY. DESCRIPTION

- | | | |
|---|---|--|
| ① | 1 | TAPPED & THREADED D.I. CAP, RJ WITH 2" IP TAP. |
| ② | 2 | 2" GALVANIZED PIPE, LENGTH TO FIT. |
| ③ | 1 | 2" 90° GALVANIZED ELBOW, FIPxFIP. |
| ④ | 1 | 2" BALL VALVE, FIPxFIP, MATCO 757T08LF OR EQUAL. |
| ⑤ | 1 | TRAFFIC RATED BOX AND COVER, OR EQUAL. |

NOTES:

1. NUMBER AND LOCATION OF THE TEMPORARY BLOW-OFFS WILL BE AS SHOWN ON THE DESIGN PLANS OR AS DIRECTED BY THE DISTRICT IN THE FIELD.
2. PROVIDE TEMPORARY BLOCKING FOR BLOW-OFFS TO RESIST TEST PRESSURES.

TEMPORARY BLOW-OFF ASSEMBLY FOR NEW WATERMAIN

NOT TO SCALE

DETAIL APPROVALS

EDITOR TMC

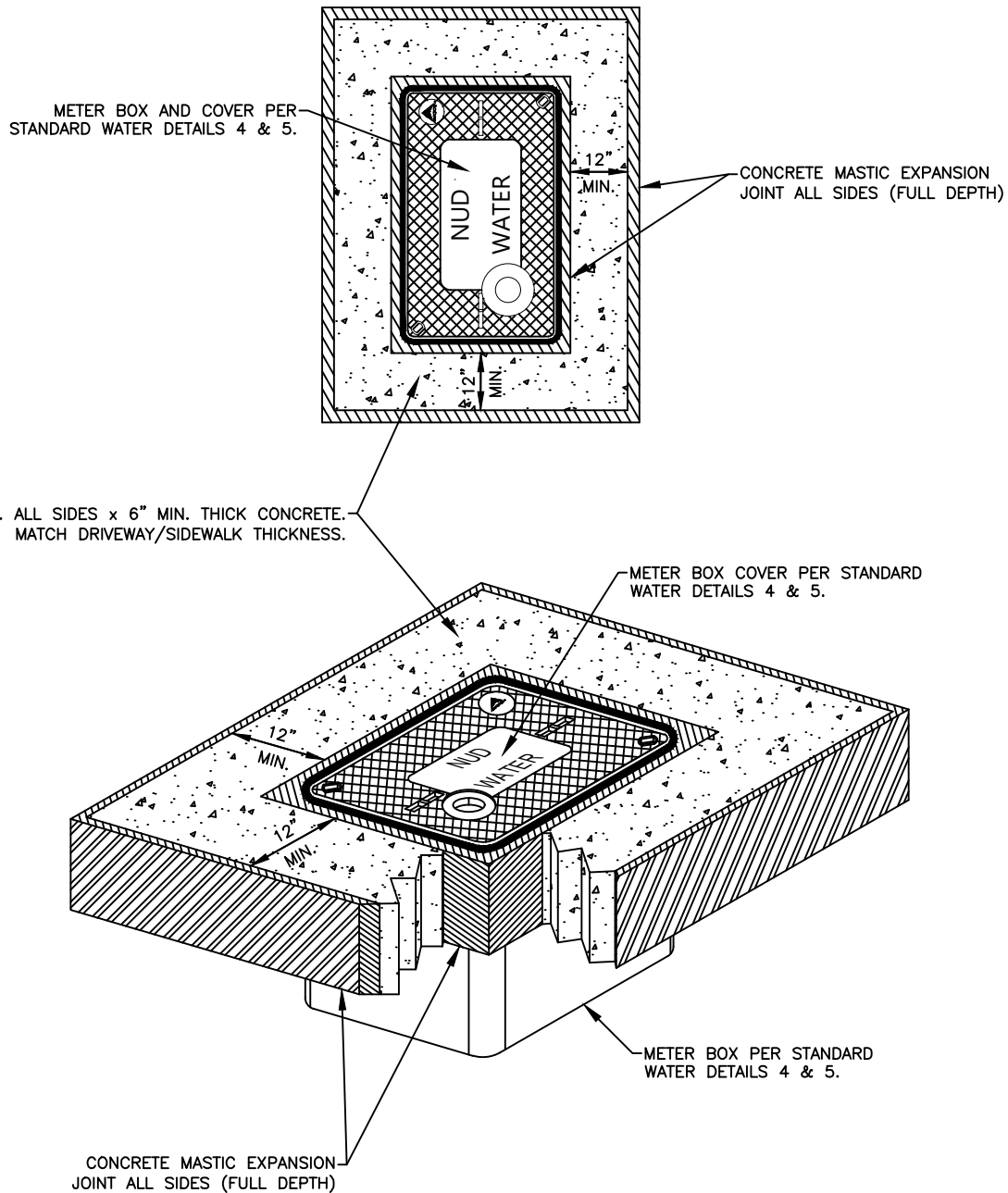
ENG. DIR. SJD

NORTHSHORE UTILITY DISTRICT

2025 STANDARD WATER DETAILS

17

LAST UPDATED
FEBRUARY 2020



NOTES:

1. METER BOX BLOCK OUT IS ONLY TO BE USED IN CONCRETE DRIVEWAYS OR SIDEWALKS.
2. DISTRICT APPROVAL IS REQUIRED PRIOR TO INSTALLING METER BOX IN DRIVEWAYS.
3. BACKFILL FOR METER BOX BASE IS TO BE COMPACTED 1 1/4" BASE COURSE OR 3/4" TOP COURSE CRUSHED ROCK.
4. CONCRETE FINISH SHALL MATCH ADJACENT CONCRETE DRIVEWAY OR SIDEWALK FINISH.

METER BOX BLOCK OUT FOR DRIVEWAYS AND SIDEWALKS

NOT TO SCALE

DETAIL APPROVALS

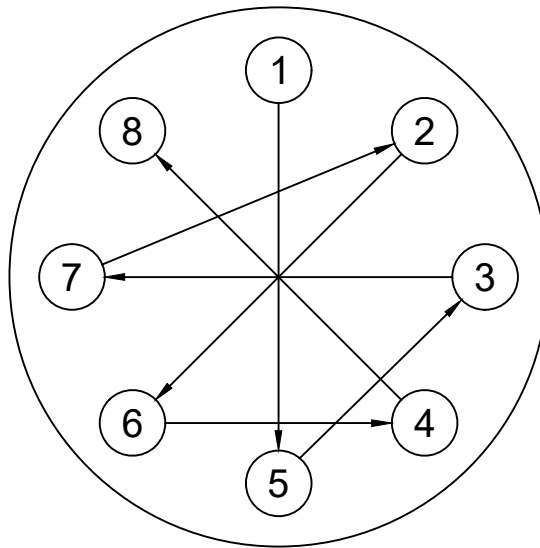
EDITOR TMC

ENG. DIR. SJD

NORTHSHORE UTILITY DISTRICT
2025 STANDARD WATER DETAILS

18

LAST UPDATED
APRIL 2021



8 BOLT EXAMPLE

NO OF BOLTS	NOMINAL FLG SIZE	BOLT NUT TIGHTENING SEQUENCE
8	4", 6", 8"	1, 5, 3, 7, 2, 6, 4, 8
12	10", 12"	1, 7, 4, 10, 2, 8, 5, 11, 3, 9, 6, 12

NOTES:

1. BOLTS AND NUTS SHALL BE CLEAN AND DRY (UNLUBRICATED).
 - HAND TIGHTEN ALL NUTS.
 - CONSECUTIVELY NUMBER THE BOLTS AROUND THE FLANGE.
2. TIGHTEN BOLTS AND NUTS IN THE SEQUENCE GIVEN IN THE TABLE ABOVE.
 - FIRST: TIGHTEN BOLTS AND NUTS TO ONE-THIRD OF MANUFACTURER'S RECOMMENDED TARGET TORQUE.
 - SECOND: TIGHTEN BOLTS AND NUTS TO TWO-THIRDS OF MANUFACTURER'S RECOMMENDED TARGET TORQUE.
 - LAST: TIGHTEN BOLTS AND NUTS TO FULL MANUFACTURER'S RECOMMENDED TARGET TORQUE.
3. SEQUENCE GIVEN IS FOR AWWA C110, AND ANSI CLASS 125 AND 150 FLANGES.

BOLT TIGHTENING SEQUENCE

NOT TO SCALE

DETAIL APPROVALS

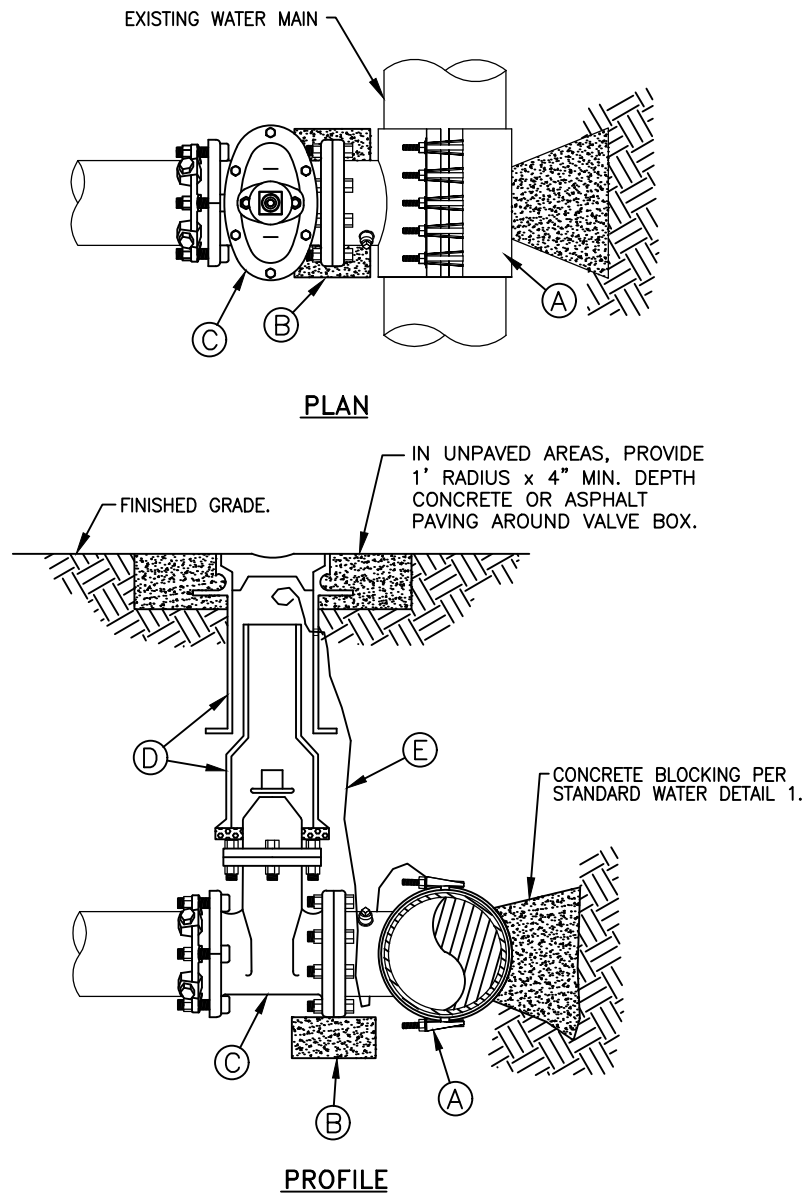
EDITOR TMC

ENG. DIR. SJD

NORTHSHORE UTILITY DISTRICT
2025 STANDARD WATER DETAILS

19

LAST UPDATED
APRIL 2021



MATERIALS LIST

ITEM DESCRIPTION

- (A) STAINLESS STEEL TAPPING TEE WITH DI FLANGE; ROMAC SST, FORD FAST, OR JCM 462.
- (B) PRECAST 4"x8"x16" CONCRETE BLOCK.
- (C) R.W. GATE VALVE, F.L.xR.J.: SHALL BE PER THE SPECIFICATIONS. FOR VALVE OPERATING NUT DEPTHS, SEE STANDARD WATER DETAIL #11
- (D) TWO-PIECE VALVE BOX AND ETHAFOAM RING PER THE SPECIFICATIONS AND STANDARD WATER DETAIL #11.
- (E) TRACER WIRE: DIRECT BURY BLUE 14 GAUGE COPPER, CONTINUOUS, SOLID CORE, POLYETHYLENE INSULATED WIRE PER THE SPECIFICATIONS. CONTINUOUS FROM MAINLINE.

TAPPING TEE AND GATE VALVE

NOT TO SCALE

DETAIL APPROVALS

EDITOR TMC

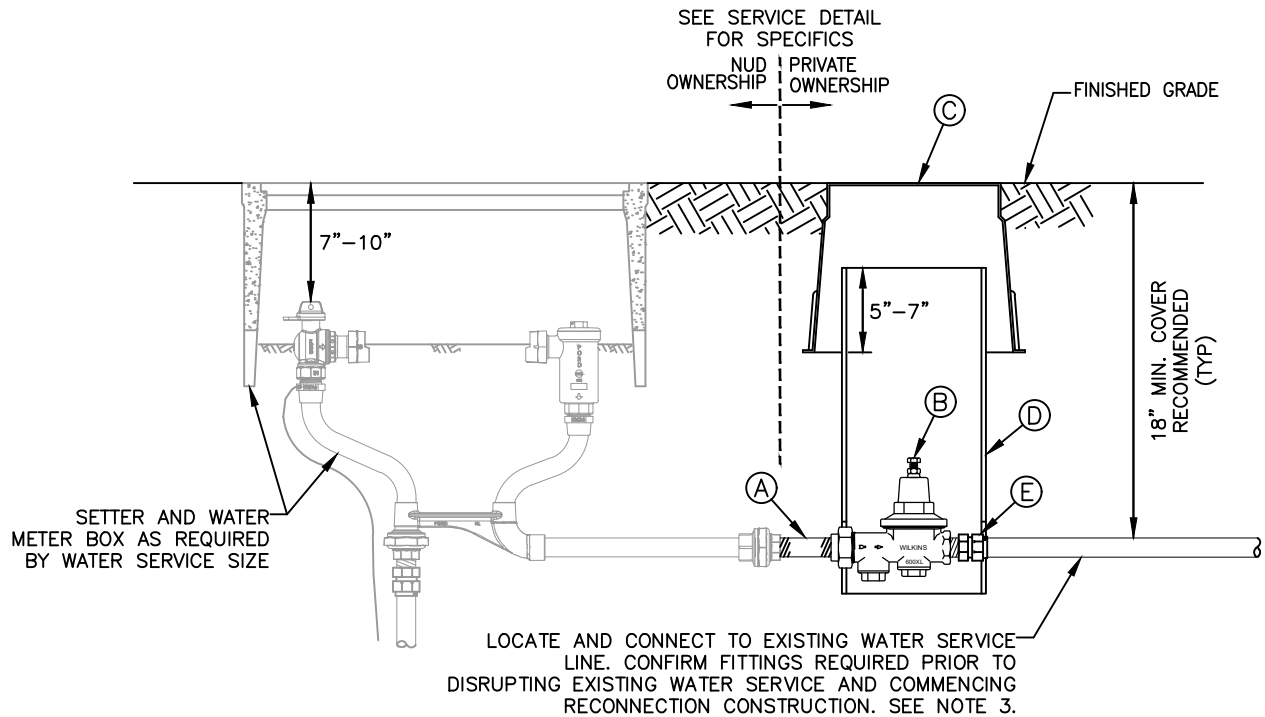
ENG. DIR. SJD

NORTHSHORE UTILITY DISTRICT

2025 STANDARD WATER DETAILS

20

LAST UPDATED
JANUARY 2023



MATERIALS LIST

ITEM DESCRIPTION

- (A) BRASS NIPPLE, LENGTH TO FIT.
- (B) PRV WITH STRAINER, 3/4" – 2", WITH UNION COUPLING ON INLET. PRV SHALL BE WILKINS 600XL, WATTS LF25AUB–Z3, OR APPROVED EQUAL.
- (C) PRV BOX: LANDSCAPE AREAS – 10" DIAMETER, 10" TALL CARSON BOX 910 OR EQUAL. TRAFFIC AREAS – TRAFFIC RATED METER BOX WITH SOLID LID.
- (D) 8" DIAMETER SDR 35 PVC RISER PIPE, LENGTH TO FIT. CUT OUT MOUSE HOLES TO FIT OVER SERVICE PIPE.
- (E) BRASS INSTA–TITE OR COMPRESSION PACK JOINT STYLE FITTING, COMPATIBLE WITH CUSTOMER'S PRIVATE WATER LINE.

NOTES:

1. A NEW PRV SHALL BE INSTALLED IF A PRIVATE PRV IS REMOVED DURING NEW SERVICE INSTALLATION. CONTRACTOR TO DETERMINE SIZE OF NEW PRV.
2. CONTRACTOR TO MEASURE AND RECORD EXISTING WATER PRESSURE AT BUILDING PRIOR TO RECONNECTION AND AFTER REESTABLISHMENT OF SERVICE. IF PRESSURE READINGS DIFFER BY MORE THAN 5 PSI, THE CONTRACTOR SHALL LOCATE AND CORRECT THE ISSUE AT THE PRV.
3. ALL PIPE FITTINGS SHALL BE BRASS. PRIOR TO MAKING THE CONNECTION, THE CONTRACTOR SHALL POT-HOLE THE EXISTING SERVICE LINE TO DETERMINE THE LOCATION, SIZE, AND TYPE OF EXISTING PIPE AND TO CONFIRM THE PIPE AND FITTINGS REQUIRED TO MAKE THE CONNECTION. THE CONTRACTOR SHALL PROVIDE ALL REQUIRED PIPE AND FITTINGS ON-SITE PRIOR TO DISRUPTING WATER SERVICE AND COMMENCING CONSTRUCTION. NO EXISTING WATER SERVICE SHALL BE DISRUPTED FOR MORE THAN TWO HOURS IN ONE DAY.
4. PRV SHALL BE LOCATED DIRECTLY DOWNSTREAM OF THE METER OR BACKFLOW ASSEMBLY, IF INSTALLED. RESPONSIBILITY FOR PROPER INSTALLATION SHALL BE THAT OF THE CONTRACTOR. MAINTENANCE AND OPERATION OF THE VALVE SHALL BE THAT OF THE PROPERTY OWNER.

PRESSURE REDUCING VALVE (PRV)

NOT TO SCALE

DETAIL APPROVALS

EDITOR TMC

ENG. DIR. SJD

NORTHSHORE UTILITY DISTRICT

2025 STANDARD WATER DETAILS

21

LAST UPDATED
FEBRUARY 2022

