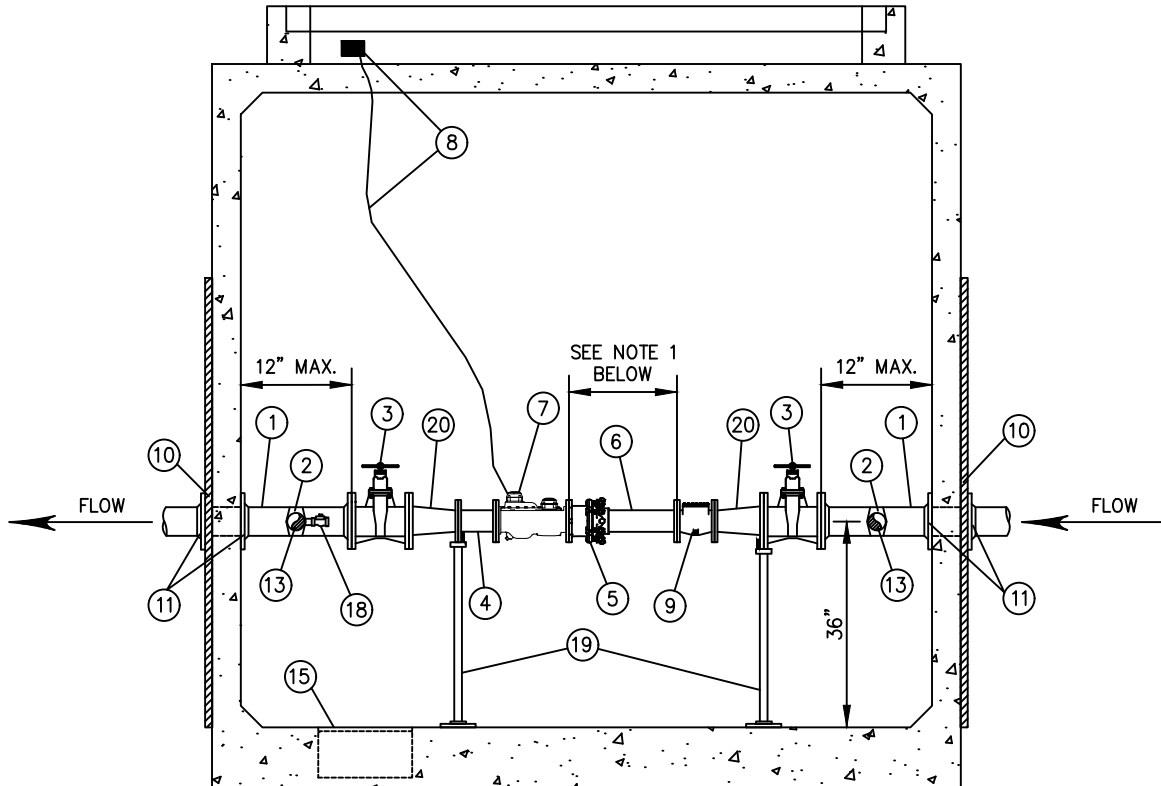


PLAN VIEW
NOT TO SCALE



SECTION A-A
NOT TO SCALE

NOTES:

1. DISTANCE BETWEEN METER AND STRAINER SHALL BE A MINIMUM OF 15" FOR 3" SERVICE LINES AND MINIMUM 20" FOR 4" SERVICE LINES. FOR 3" WATER SERVICE INSTALLATION, SEE NOTES ON ITEM 20 ON DETAIL #6a.
2. SEE NUD STANDARD WATER DETAIL #6a FOR MATERIALS LIST AND ADDITIONAL NOTES.
3. SEE NUD STANDARD WATER DETAIL #16 AND #16a FOR VAULT DETAILS.

3" & 4" WATER SERVICE

NOT TO SCALE

DETAIL APPROVALS

EDITOR TMC

MANAGER SJD

NORTHSHORE UTILITY DISTRICT

2022 STANDARD WATER DETAILS

6

LAST UPDATED
APRIL 2021

MATERIALS LIST

ITEM QTY. DESCRIPTION

- | | | |
|---|---|--|
| ① | 2 | D.I. ADAPTER, FLxPE, 3'± LONG. |
| ② | 2 | SADDLE WITH STAINLESS STEEL STRAP, ROMAC 202NS, FORD FCD202, OR MUELLER DR2S; WITH 2" IP TAP. |
| ③ | 2 | RESILIENT SEAT GATE VALVE, NRS, FL, O-RING PACKING WITH HANDWHEEL. VALVE TO BE AMERICAN, MUELLER, M&H, OR CLOW MEETING AWWA C515. |
| ④ | 1 | D.I. SPOOL, FLxFL, LENGTH TO FIT |
| ⑤ | 1 | FLANGED COUPLING ADAPTER TO BE ROMAC FLANGED COUPLING ADAPTER, STYLE RFCA. |
| ⑥ | 1 | D.I. ADAPTER, FLxPE, LENGTH TO BE A MINIMUM OF 15" FOR 3" SERVICES AND 20" FOR 4" SERVICES. |
| ⑦ | 1 | FLANGED SINGLE REGISTER HIGH PERFORMANCE COMPOUND METER, TO BE PROVIDED BY DISTRICT AND INSTALLED BY CONTRACTOR. |
| ⑧ | 1 | METER ENDPOINT AND MOUNTING BRACKET, TO BE PROVIDED AND INSTALLED BY DISTRICT ON HATCH RISER. |
| ⑨ | 1 | FLANGED STRAINER, TO BE PROVIDED BY DISTRICT AND INSTALLED BY CONTRACTOR. |
| ⑩ | 4 | 2"x2"x1/4" MIN. WALL THICKNESS SQUARE STEEL TUBING, 6' MIN. LENGTH. BOLT TO VAULT WALL IN FOUR PLACES WITH STAINLESS STEEL ANCHOR BOLTS. |
| ⑪ | 4 | UNI-FLANGE ADAPTER. |
| ⑫ | 2 | 2" MIPxFIP LOCKABLE BALL VALVE. |
| ⑬ | 5 | 2" BRASS NIPPLE, LENGTH TO FIT. |
| ⑭ | 2 | 2" BRASS 90° BEND. |
| ⑮ | 1 | SUMP PUMP OR GRAVITY DRAIN AS REQUIRED BY SITE CONDITIONS, TO BE DETERMINED BY THE DEVELOPER AND CONTRACTOR AND REVIEWED AND APPROVED BY THE DISTRICT. |

FOR GRAVITY: SUMP DRAIN, ZURN Z-551, THREADED, WITH ZURN Z-1099 BACKWATER VALVE, THREADED x NO-HUB, WITH 4" D.I. PIPE TO 12" MIN. BEYOND VAULT WALL AND 4" D.I., MIN. 1% SLOPE TO DAYLIGHT OR C.B.

FOR SUMP PUMP: 16" DIAM. x 8" DEEP SUMP WITH ZOELLER MODEL 57 SUMP PUMP WITH SOLID BUOYANT POLYPROPYLENE FLOAT. PROVIDE ELECTRICAL POWER WITHIN 4' MIN.-6' MAX. VERTICAL DISTANCE AND 1' MAX. HORIZONTAL DISTANCE TO SUMP PUMP PER ALL APPLICABLE CODES. CONSTRUCT 1-1/4", SCH. 80 PVC DISCHARGE PIPING, WITH LOCATE WIRE, TO NEAREST CATCH BASIN OR APPROVED LOCATION. DISCHARGE PIPING SHALL BE ATTACHED TO THE INTERIOR VAULT WALL WITH APPROVED FASTENERS AT 3' SPACING. INSTALL A QUICK DISCONNECT COUPLING, CHECK VALVE, AND ISOLATION BALL VALVE ON DISCHARGE PIPING IMMEDIATELY AFTER SUMP PUMP. SEE STANDARD WATER DETAIL #16A FOR PUMP AND PIPING DETAIL.

- | | | |
|---|---|---|
| ⑯ | 1 | 2" BRASS UNION. |
| ⑰ | 1 | 2"x1" BRASS TEE. |
| ⑱ | 1 | 3/4" HOSE BIB. |
| ⑲ | 4 | ADJUSTABLE PIPING SUPPORT, STANDON MODEL #S89, OR EQUAL, SET ON CONCRETE. STANDON MODEL #S92, OR EQUAL, SHALL ONLY BE USED FOR 2" BYPASS. |
| ⑳ | 2 | FOR 3" WATER SERVICES: 4"x3" CONCENTRIC REDUCER, FLxFL. PIPE AND FITTING SIZES BETWEEN GATE VALVES (ITEM NUMBERS 4, 5, 6, 7, AND 9) SHALL MATCH METER SIZE. |

NOTES:

1. PROVIDE SHOP DRAWINGS AND SUBMITTALS FOR ALL MATERIALS TO THE DISTRICT FOR REVIEW AND APPROVAL PRIOR TO CONSTRUCTION.
2. VAULT SHALL BE UTILITY VAULT 687-LA (8'Lx6'Wx7'D; INSIDE DIMENSION). SEE DISTRICT STANDARD DETAIL #S 16 AND 16a FOR VAULT DETAIL.
3. ALL PIPE AND CONDUIT PENETRATIONS SHALL BE CORE-DRILLED ON-SITE AND SHALL BE SEALED WATERTIGHT. PROVIDE "LINK-SEAL" FITTINGS AT ALL PENETRATIONS.
4. ALL PIPING AND APPURTENANCES OUTSIDE THE VAULT SHALL BE RESTRAINED JOINT. IN ADDITION TO THE RESTRAINED JOINTS, THRUST BLOCKING AT ALL TEES AND BENDS PER DISTRICT STANDARD WATER DETAIL #S 1 AND 2 SHALL BE REQUIRED.
5. THE CONTRACTOR IS RESPONSIBLE FOR ELECTRICAL PERMITS AND APPROVALS FOR SUMP PUMP INSTALLATIONS.
6. FOR PREMISE ISOLATION, AN APPROVED BACKFLOW ASSEMBLY SHALL BE INSTALLED IMMEDIATELY BEHIND THE WATER METER PER DISTRICT STANDARD WATER DETAIL #14a OR #14b.
7. NUD'S OWNERSHIP WILL BE TO THE DOWNSTREAM OUTSIDE EDGE OF THE VAULT.

3" & 4" WATER SERVICE

NOT TO SCALE

DETAIL APPROVALS

EDITOR TMC

MANAGER SJD

NORTHSHORE UTILITY DISTRICT

2022 STANDARD WATER DETAILS

6a

LAST UPDATED
FEBRUARY 2022