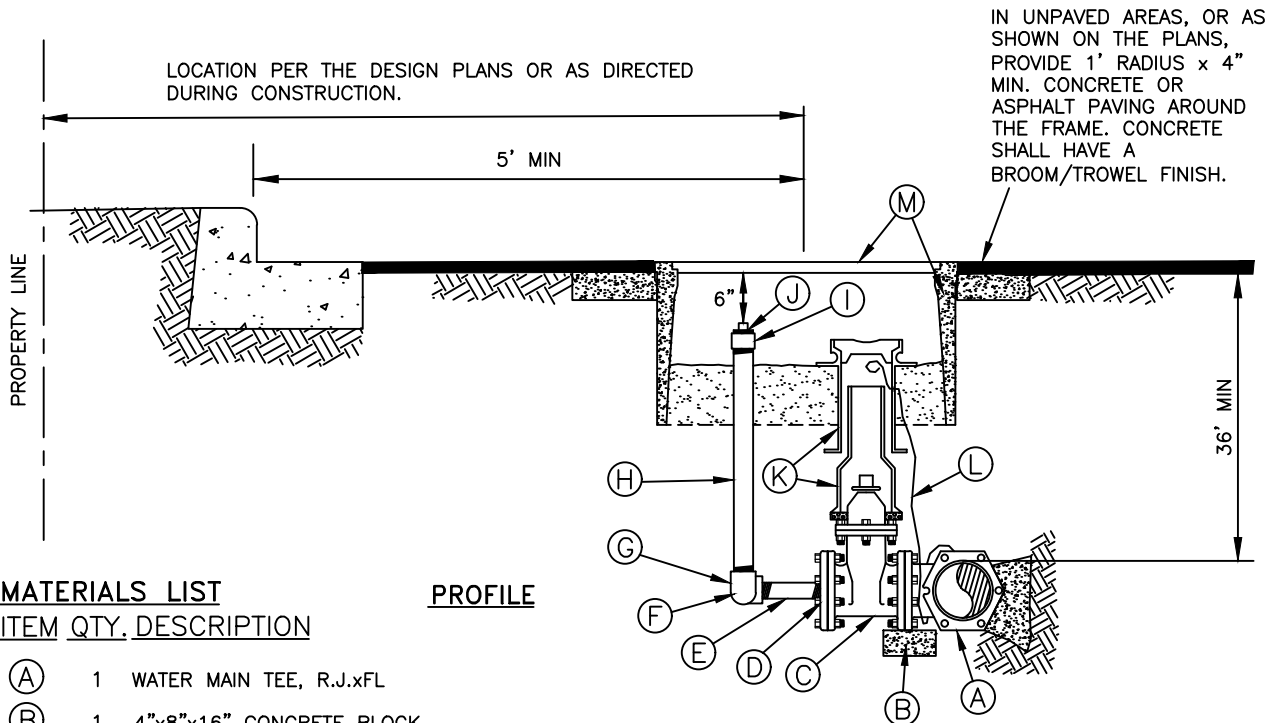


**PLAN**



**MATERIALS LIST**

ITEM QTY. DESCRIPTION

- (A) 1 WATER MAIN TEE, R.J.xFL
- (B) 1 4"x8"x16" CONCRETE BLOCK.
- (C) 1 4" GATE VALVE, FLxFL.
- (D) 1 4" COMPANION FLANGE WITH 2" IPS TAP.
- (E) 1 2"x4" BRASS PIPE NIPPLE.
- (F) 1 2" 90° BRASS ELBOW, FIPxFIP.
- (G) 1 2" BRASS STREET ELBOW, FIPxMIP
- (H) 1 2" BRASS PIPE, LENGTH TO FIT.
- (I) 1 2" BRASS COUPLING, FIPxFIP.
- (J) 1 2" PVC PLUG.
- (K) 1 TWO-PIECE CAST IRON VALVE BOX AND ETHAFOAM RING PER THE SPECIFICATIONS AND STANDARD WATER DETAIL 11.
- (L) 1 TRACER WIRE: DIRECT BURY BLUE 14 GAUGE COPPER, CONTINUOUS, SOLID CORE, POLYETHYLENE INSULATED WIRE PER THE SPECIFICATIONS. CONTINUOUS FROM MAINLINE.
- (M) 1 ARMORCAST METER BOX, A6001640PCX12-NUD (WITH NO "MOUSE HOLES") AND ARMORCAST COVER, A6001947T-NUD, OR DFW METER BOX, DFW1730CNP4-12-BODY AND DFW COVER DFW1730C-4M-BLANK-NS-NHK-LID.

**2" BLOW-OFF ASSEMBLY**

NOT TO SCALE

**DETAIL APPROVALS**

**EDITOR** TMC

**ENG. DIR.** CF

**NORTHSHORE UTILITY DISTRICT**

**2025 STANDARD WATER DETAILS**

**10**

LAST UPDATED  
MAY 2025