

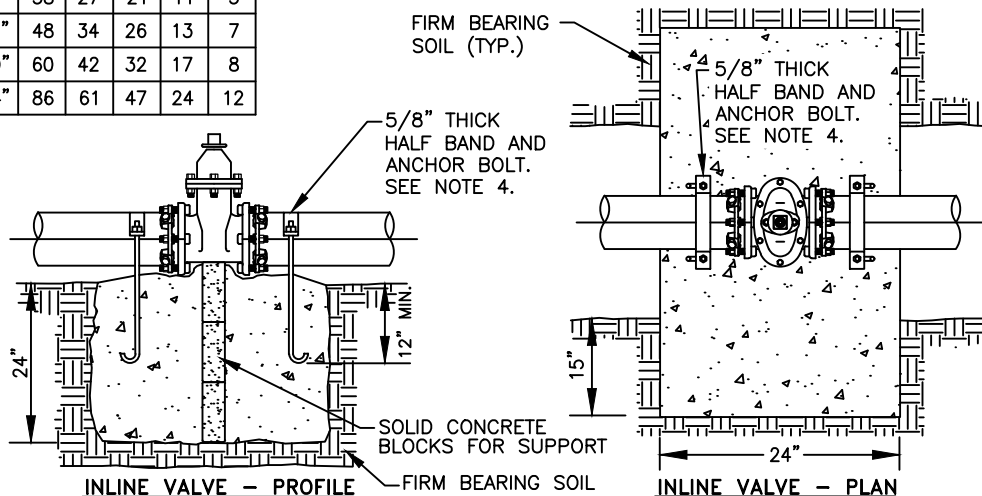
THRUST BLOCK SIZING FOR 250 PSI PRESSURE

MIN. BEARING AREA AGAINST UNDISTURBED
SOIL IN SQUARE FEET.

PIPE SIZE	(A)	(B)	(C)	(D)	(E)
4"	3	2	2	1	1
6"	6	4	3	2	1
8"	10	7	5	3	2
10"	15	11	8	4	2
12"	22	15	12	6	3
14"	29	21	16	8	4
16"	38	27	21	11	5
18"	48	34	26	13	7
20"	60	42	32	17	8
24"	86	61	47	24	12

GENERAL NOTES:

1. CONCRETE THRUST BLOCK AREA BASED UPON A SOIL BEARING LOAD OF 2,000 LBS. PER SQ. FT.
2. AREAS MUST BE ADJUSTED FOR OTHER SIZE PIPE, PRESSURES AND SOIL CONDITIONS.
3. CONCRETE BLOCKING SHALL BE CAST-IN-PLACE AGAINST FIRM, UNYIELDING, AND UNDISTURBED MATERIAL AND HAVE MINIMUM OF 1/2 SQUARE FOOT CONTACT BEARING AGAINST THE FITTING.
4. BLOCK SHALL BEAR AGAINST FITTINGS ONLY AND SHALL BE CLEAR OF JOINTS TO PERMIT TAKING UP OR DISMANTLING JOINT. INSTALL 8 MIL. PLASTIC SHEETING BETWEEN FITTING AND BLOCK.
5. CONTRACTOR SHALL INSTALL BLOCKING ADEQUATE TO WITHSTAND TEST PRESSURE AS WELL AS TO CONTINUOUSLY WITHSTAND OPERATING PRESSURE UNDER ALL CONDITIONS OF SERVICE.
6. IN MUCK OR PEAT, PIPE AND FITTING RESTRAINT SHALL BE AS DIRECTED BY THE DISTRICT.
7. CONNECTIONS TO EXISTING PRESSURIZED SYSTEM SHALL BE BLOCKED FOR IMMEDIATE THRUST.



NOTES:

1. CONCRETE BLOCKING AREA IS BASED ON 250 PSI WATER PRESSURE AND 3,000 PSI CONCRETE STRENGTH.
2. HARDWARE EMBEDDED IN CONCRETE SHALL BE CLEANED AND COATED WITH COAL TAR EPOXY OR APPROVED BITUMINOUS COATING EQUIVALENT PRIOR TO INSTALLATION. HARDWARE NOT EMBEDDED IN CONCRETE SHALL BE CLEANED AND COATED AFTER INSTALLATION. ALL BOLTS, ALL-THREAD, AND HARDWARE TO BE ZINC COATED OR APPROVED EQUAL.
3. IN-LINE VALVE SHALL BE M.J.xM.J. AND BE RESTRAINED WITH MEGA-LUGS, OR EQUAL.
4. HARDWARE SHALL BE TWO CARBON STEEL HALF BANDS (5/8" THICK) EQUAL TO 595 SOCKET CLAMP FROM ANVIL INTERNATIONAL. RODS SHALL BE ALL-THREAD, BENT AT THE ENDS OR ALL-THREAD WITH BOLTS AND WASHERS AT END, OR BENT ANCHOR BOLTS. RODS/BOLTS SHALL HAVE 12" MIN. EMBEDMENT FOR INLINE VALVES.

CONCRETE BLOCKING - HORIZONTAL

NOT TO SCALE

DETAIL APPROVALS

EDITOR TMC

ENG. DIR. CF

NORTHSHORE UTILITY DISTRICT

2025 STANDARD WATER DETAILS

1

LAST UPDATED
MAY 2025