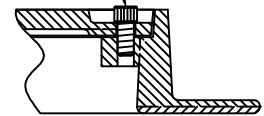
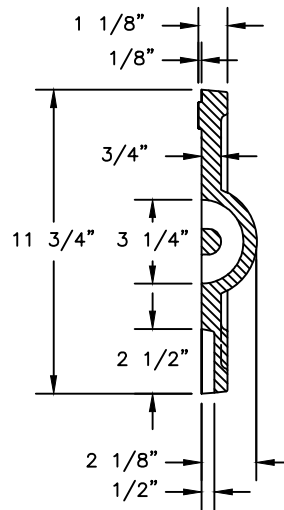


FRAME SECTION

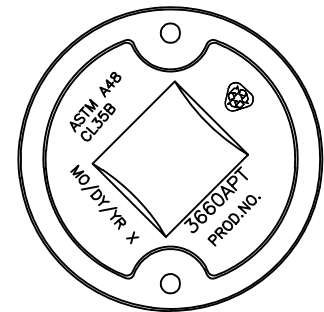
(2) BOLT SOCKET (ALLEN HEAD)
5/8"-11 X 1 1/2" STAINLESS STEEL
(PART# 00981177)



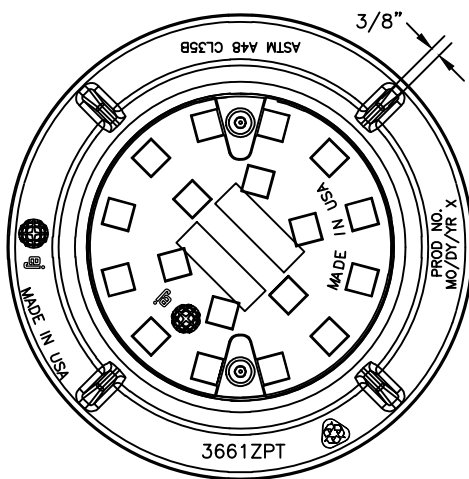
BOLTING DETAIL



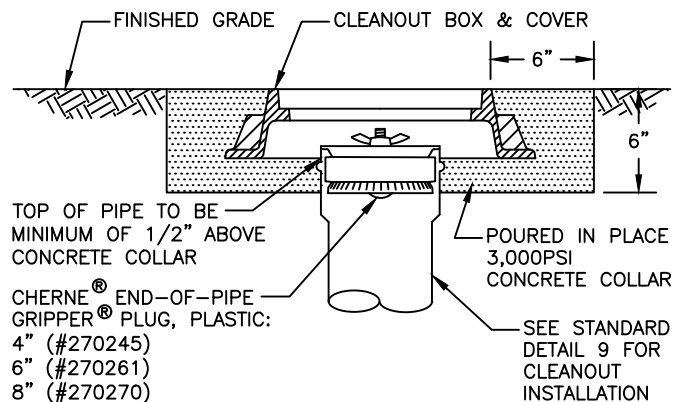
COVER SECTION



COVER BACK



COVER AND FRAME PLAN



INSTALLATION PROFILE

NOTES:

1. ALL CLEANOUTS SHALL BE BROUGHT TO THE SURFACE. CLEANOUTS ARE REQUIRED AT THE EDGE OF R.O.W. OR EASEMENT, AT THE BUILDING, AND EVERY 100 FEET.
2. CLEANOUT BOXES AND COVERS LOCATED AT THE PROPERTY LINE, OR EDGE OF EASEMENT, AND IN HARDSCAPES SHALL BE EAST JORDAN IRONWORKS GRAY IRON ASSEMBLY, PART #00366107, HEAVY DUTY RATED WITH STAINLESS STEEL ALLEN HEAD SOCKET BOLTS.
3. CLEANOUT BOXES AND COVERS LOCATED IN LANDSCAPE AREA'S WITHIN THE PROPERTY MAY BE A MINIMUM 6" ROUND OR 6" SQUARE LANDSCAPE/IRRIGATION BOX EQUIVALENT TO A CARSON TRUSST 708, NDS 107BC, OR NDS D1000-SG.
4. WOOD SHIMS ARE NOT ALLOWED. PLASTIC OR CONCRETE SHIMS ARE TO BE USED FOR PLACING CLEANOUT BOX WHILE CONCRETE COLLAR IS POURED.

SURFACE CLEANOUT BOX

NOT TO SCALE

DETAIL APPROVALS

EDITOR TMC

ENG. DIR. CF

NORTHSHORE UTILITY DISTRICT

2025 STANDARD SEWER DETAILS

9a

LAST UPDATED
MAY 2025