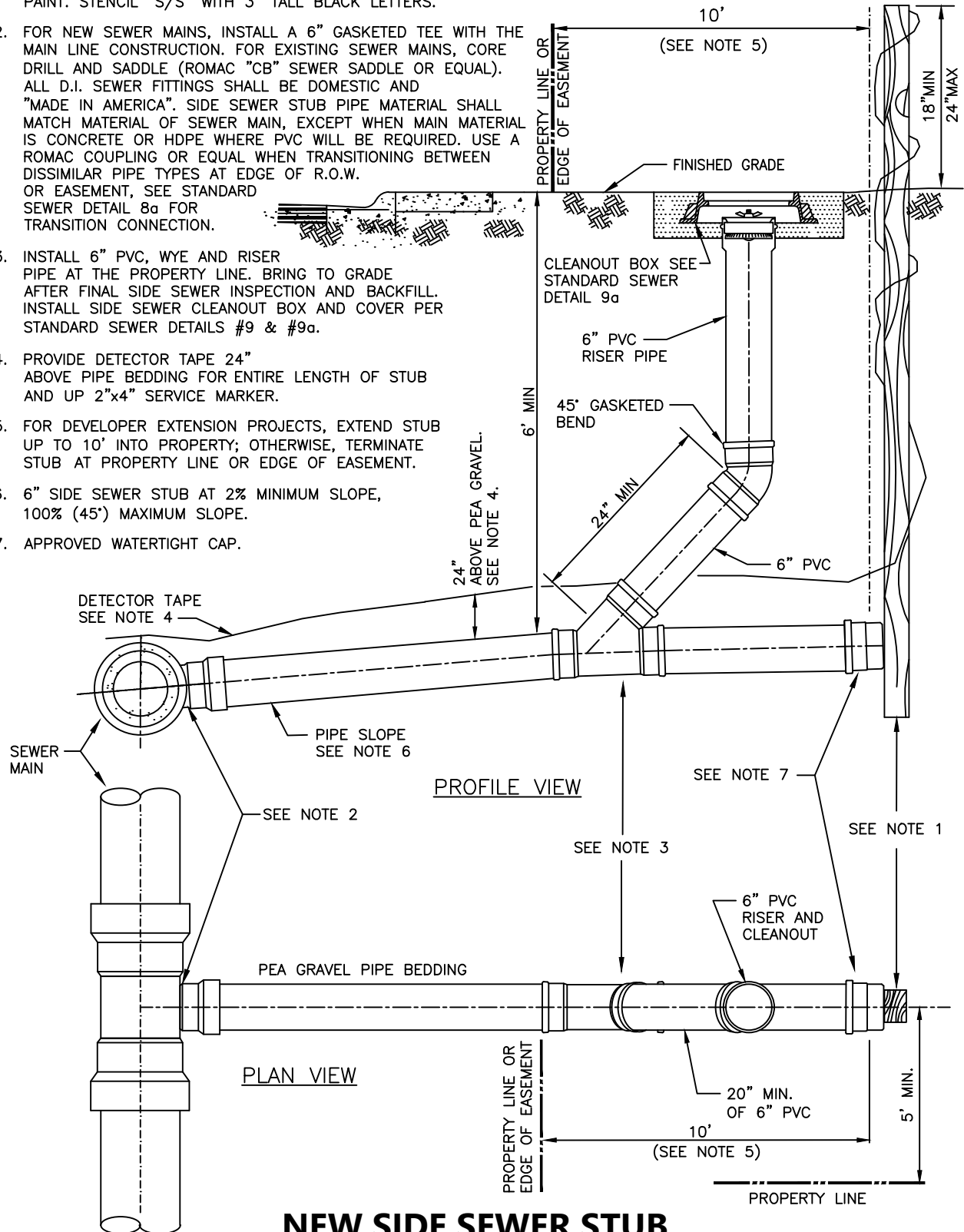


NOTES:

1. 2"x4" SERVICE MARKER, LENGTH AS REQUIRED. PAINT PORTION OF SERVICE MARKER THAT IS ABOVE GRADE WITH WHITE PAINT. STENCIL "S/S" WITH 3" TALL BLACK LETTERS.
2. FOR NEW SEWER MAINS, INSTALL A 6" GASKETED TEE WITH THE MAIN LINE CONSTRUCTION. FOR EXISTING SEWER MAINS, CORE DRILL AND SADDLE (ROMAC "CB" SEWER SADDLE OR EQUAL). ALL D.I. SEWER FITTINGS SHALL BE DOMESTIC AND "MADE IN AMERICA". SIDE SEWER STUB PIPE MATERIAL SHALL MATCH MATERIAL OF SEWER MAIN, EXCEPT WHEN MAIN MATERIAL IS CONCRETE OR HDPE WHERE PVC WILL BE REQUIRED. USE A ROMAC COUPLING OR EQUAL WHEN TRANSITIONING BETWEEN DISSIMILAR PIPE TYPES AT EDGE OF R.O.W. OR EASEMENT, SEE STANDARD SEWER DETAIL 8a FOR TRANSITION CONNECTION.
3. INSTALL 6" PVC, WYE AND RISER PIPE AT THE PROPERTY LINE. BRING TO GRADE AFTER FINAL SIDE SEWER INSPECTION AND BACKFILL. INSTALL SIDE SEWER CLEANOUT BOX AND COVER PER STANDARD SEWER DETAILS #9 & #9a.
4. PROVIDE DETECTOR TAPE 24" ABOVE PIPE BEDDING FOR ENTIRE LENGTH OF STUB AND UP 2"x4" SERVICE MARKER.
5. FOR DEVELOPER EXTENSION PROJECTS, EXTEND STUB UP TO 10' INTO PROPERTY; OTHERWISE, TERMINATE STUB AT PROPERTY LINE OR EDGE OF EASEMENT.
6. 6" SIDE SEWER STUB AT 2% MINIMUM SLOPE, 100% (45°) MAXIMUM SLOPE.
7. APPROVED WATERTIGHT CAP.



NEW SIDE SEWER STUB CONNECTION TO EXISTING OR NEW MAIN

NOT TO SCALE

DETAIL APPROVALS

EDITOR TMC

ENG. DIR. CF

NORTHSHORE UTILITY DISTRICT 2025 STANDARD SEWER DETAILS

7

LAST UPDATED
MAY 2025