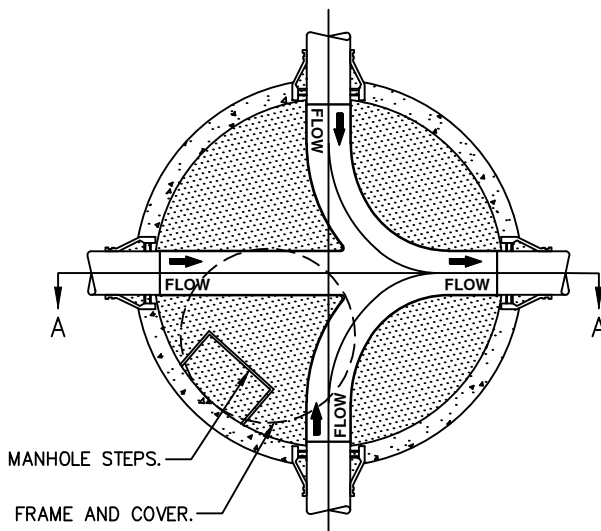


SECTION A-A



PLAN

PRECAST SHALLOW MANHOLE

NOT TO SCALE

NOTES:

1. MANHOLE BASE SHALL BE CONCRETE CHanneled PER THE ENGINEERING SPECIFICATIONS. SLOPE SHALL BE A MINIMUM OF 0.1' ACROSS THE INVERT CHANNEL.
2. USE 18" ECCENTRIC CONE, OR APPROVED 24" CONE, AND 2' BASE FOR SHALLOW MANHOLE APPLICATION.
3. MARKER POSTS MAY BE REQUIRED IN EASEMENTS.
4. ALL PICK HOLES AND JOINTS SHALL BE GROUTED ON THE INSIDE AND OUTSIDE OF MANHOLE. GROUT SHALL HAVE A SMOOTH FINISH.
5. MANHOLE LID SHALL BE ORIENTED PER THE DISTRICT'S DIRECTION.

DETAIL APPROVALS

EDITOR TMC

ENG. DIR. CF

NORTHSHORE UTILITY DISTRICT

2025 STANDARD SEWER DETAILS

3

LAST UPDATED
MAY 2025