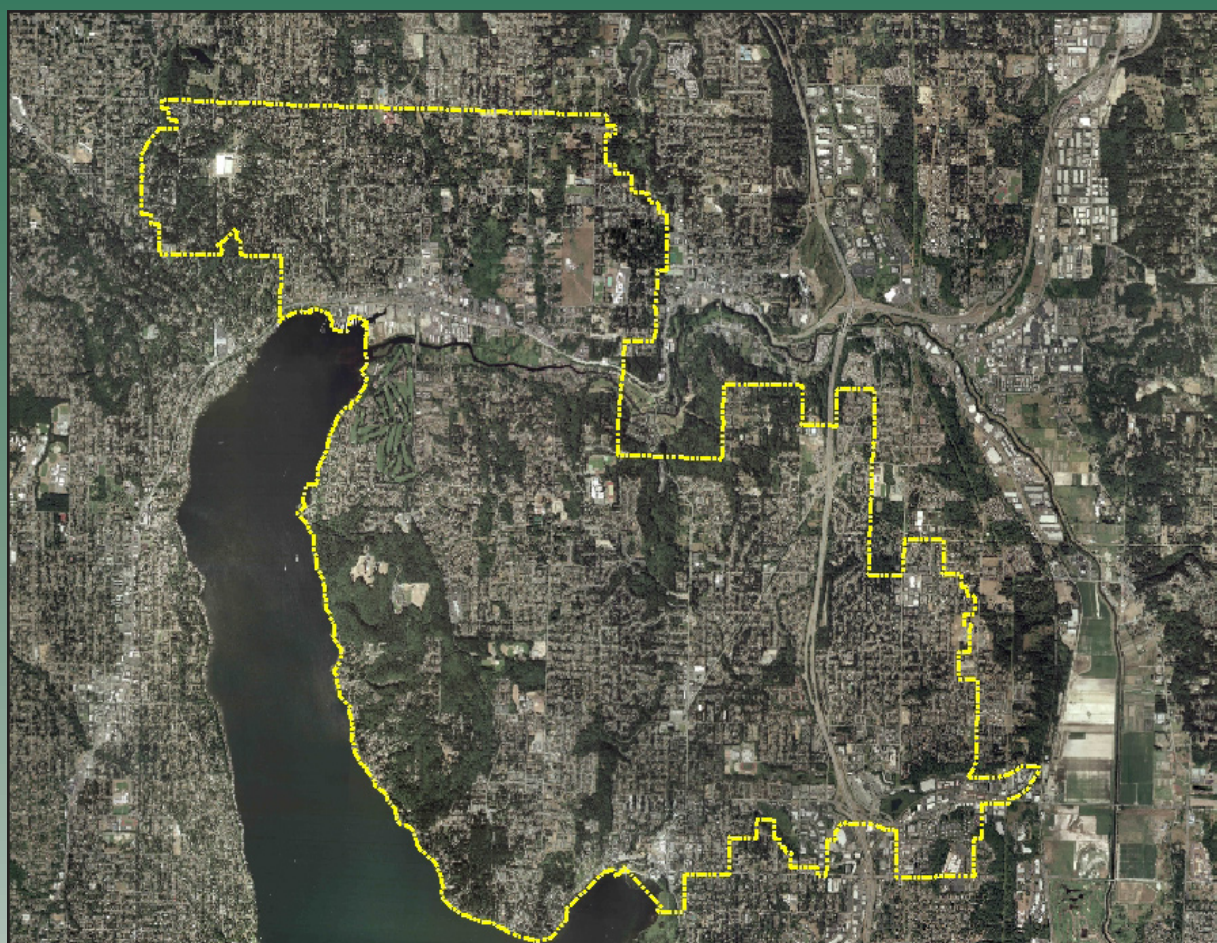


NORTHSHORE UTILITY DISTRICT

KING COUNTY, WASHINGTON

WASTEWATER SYSTEM PLAN



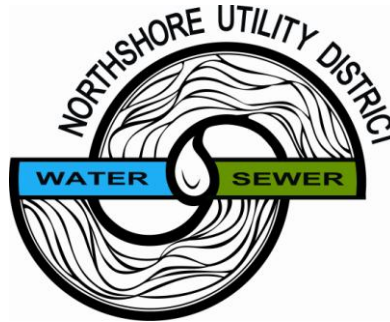
FINAL

March 2009



Gray & Osborne, Inc.
CONSULTING ENGINEERS

NORTHSHORE UTILITY DISTRICT
KING COUNTY **WASHINGTON**



WASTEWATER SYSTEM PLAN

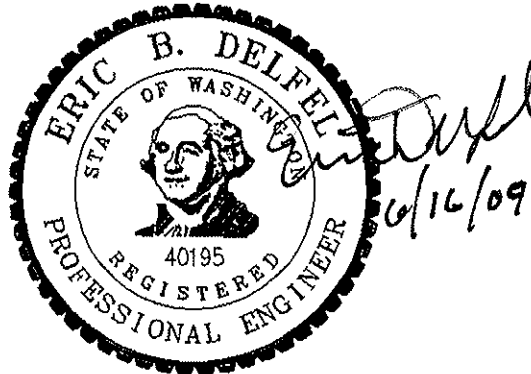
G&O #06403
MARCH 2009



NORTHSHORE UTILITY DISTRICT
KING COUNTY **WASHINGTON**



WASTEWATER SYSTEM PLAN



G&O #06403
MARCH 2009



TABLE OF CONTENTS

EXECUTIVE SUMMARY

Introduction	E-1
Study Area Planning Criteria	E-1
Existing System	E-3
Wastewater Characterization	E-4
Reuse	E-5
Collection System Hydraulic Model	E-6
Operation and Maintenance Program	E-6
System Evaluation	E-7
Capital Improvements	E-7
Finance	E-9

CHAPTER 1 – INTRODUCTION

Introduction	1-1
Purpose	1-1
Plan Summary	1-1
History of the District	1-2
Organization	1-3
List of Abbreviations	1-4
Glossary of Terms	1-5

CHAPTER 2 – REGULATORY REQUIREMENTS

Introduction	2-1
Legislation, Regulations, and Permits	2-1
Capacity, Management Operation and Maintenance	2-1
Endangered Species Act	2-2
Federal Clean Air Act	2-3
Federal Clean Water Act	2-3
Floodplain Development Permit	2-4
Growth Management Act	2-5
Hydraulic Project Approval	2-5
Local Permits	2-5
National Environmental Policy Act	2-5
Reclaimed Water Regulations and Standards	2-6
Shoreline Management Act Permit	2-6
State Environmental Policy Act	2-6
State Water Pollution Control Act	2-7
Regulatory Agencies	2-7
United States Environmental Protection Agency	2-7
United States Fish and Wildlife Service	2-7
National Marine Fisheries Service	2-7
United States Army Corps of Engineers	2-8

Washington State Department of Health	2-8
Washington State Department of Ecology	2-8
Washington State Department of Fish and Wildlife	2-9
Local Health Departments	2-9
City and County Planning Policies	2-9
District Policies	2-9
Design, Construction, Operation, and Maintenance Standards	2-11
Pretreatment Requirements	2-11
Gravity System	2-11
Lift Stations	2-12
Grinder Pump Systems	2-12
On-Site Septic Systems	2-12
 CHAPTER 3 - PLANNING CRITERIA	
Introduction	3-1
Growth Management	3-1
Study Area	3-1
Physical Environment	3-3
Topography	3-3
Groundwater	3-3
Climate	3-3
Surface Water	3-4
Site Sensitive Areas	3-5
Geology	3-6
Soils	3-6
Flora and Fauna	3-7
Endangered Species	3-7
Land Use Planning	3-8
Water System	3-10
Intergovernmental Coordination	3-10
Alderwood Water and Wastewater District	3-11
City of Bothell	3-11
City of Brier	3-11
City of Kenmore	3-11
King County	3-12
King County Department of Natural Resources	3-12
City of Kirkland	3-13
City of Lake Forest Park	3-13
Shoreline Wastewater Management District	3-13
City of Woodinville	3-13
Woodinville Water District	3-14
Related Planning Documents	3-14
Comprehensive Plans	3-14
Northshore Utility District Wastewater Planning Documents	3-15
Other Plans and Reports	3-15
Planning Period	3-15

Population	3-16
Current and Projected Sewer Service Study Area Population	3-16
Sewer Service Study Area Buildout Population	3-18

CHAPTER 4 – EXISTING WASTEWATER SYSTEM COMPONENTS

Introduction	4-1
Existing Wastewater Facilities	4-1
Wastewater Treatment	4-1
Existing System	4-2
Future Plans	4-2
Sewage Lift Stations	4-2
Force Mains	4-5
Low Pressure Grinder Systems	4-6
Gravity Lines	4-7
King County Department of Natural Resources Interceptors	4-7
SCADA System	4-8

CHAPTER 5 – WASTEWATER CHARACTERIZATION

Introduction	5-1
Wastewater Characterization Flow	5-1
Per Capita Domestic Flow	5-2
Commercial and Industrial Flow	5-2
Infiltration and Inflow	5-2
Peaking Factors and Diurnal Curves	5-2
Wastewater Production	5-3
Sewer Service Connections	5-3
Service Connections by Customer Class	5-4
Service Connections by Municipality within District	5-4
Residential Wastewater Production	5-5
Commercial and Industrial Wastewater Production	5-6
King County Department of Natural Resources Inflow and Infiltration Study and District Flow Monitoring Results	5-7
King County Department of Natural Resources Standards	5-7
King County Department of Natural Resources I/I Study	5-7
District I/I Flow Monitoring Study	5-13
Wastewater Production Peak Factor	5-14
Wastewater Flow Projection	5-15
Wastewater Production and ERU Projections	5-15
Potential for Water Reuse	5-18
Introduction	5-18
Permitted Uses of Reclaimed Municipal Wastewater	5-18
Groundwater Recharge	5-19
Streamflow Augmentation	5-20
Other Uses	5-20
Reuse Area Requirements	5-21
KCDNR Brightwater WWTF and Reclaimed Water Plan	5-21

Potential for Irrigation Water Reuse	5-22
Potential for Industrial Water Reuse	5-23
Jetting of Sanitary Sewer Lines	5-24
Feasibility of Reclaimed Water	5-24

CHAPTER 6 – COLLECTION SYSTEM HYDRAULIC MODEL

Introduction	6-1
Hydraulic Modeling Software	6-2
MOUSE System Requirements	6-3
GIS Capabilities	6-3
Hydraulic Model Development	6-3
Description of Collection System	6-3
Model Layout and Construction	6-5
Network Layer	6-5
Lift Stations	6-6
Catchment Layer	6-6
Model Labeling	6-7
Modeling Scenarios	6-7
Model Assumptions	6-8
Existing and Future Domestic and Commercial Flow	6-8
Domestic Peaking Factor	6-10
Snohomish County	6-10
Infiltration and Inflow	6-10
Other Modeling Assumptions	6-10

CHAPTER 7 – OPERATION AND MAINTENANCE PROGRAM

Introduction	7-1
Wastewater System Organization	7-1
Operator Certification	7-2
System Operation and Control	7-2
Graphical Information System (GIS)	7-3
SCADA System	7-3
Facility Performance Evaluation	7-4
Preventative Maintenance	7-5
SCADA System	7-6
Lift Stations	7-6
Grinder Pump Stations	7-7
Force Mains	7-7
Gravity Sewer and Manholes	7-7
Fats, Oils, and Grease Program	7-8
I/I Program and Meter Maintenance	7-8
Emergency Response Program	7-8
Safety Procedures	7-9
Capacity, Management, Operation, and Maintenance	7-9
Maintenance Record System	7-9
Staffing Levels	7-10

Water Quality Coordinator	7-10
Dispatch	7-10
Sewer Supervisor	7-10
Utility Lead Sewer Service	7-10
Sewer Service Group Crew	7-10
Utility Locator	7-11
 CHAPTER 8 – SYSTEM EVALUATION	
Introduction	8-1
Collection System Evaluation	8-1
Existing System Evaluation	8-1
Gravity Main Deficiencies	8-1
Interim Model	8-2
Buildout Model	8-2
Lift Station Results	8-4
2006 Sewer Rehabilitation Program	8-4
Manhole Rehabilitation Program	8-4
Service to Unsewered Areas	8-5
Lift Station Rehabilitation	8-9
Lift Station No. 14	8-9
Lift Station No. 19	8-9
Emergency Preparedness	8-9
Emergency Generators	8-9
Bypass pumping	8-9
Future King County Facilities	8-10
ULID-5 Trunk Modifications	8-10
Construction of the Brightwater Wastewater Treatment Plant	8-11
 CHAPTER 9 – CAPITAL IMPROVEMENTS	
Introduction	9-1
Miscellaneous (M)	9-2
Sewer Extension (E)	9-4
Lift Stations (L)	9-7
Infiltration and Inflow Program	9-8
Gravity Sewer Replacement (R)	9-11
ULID 5 Projects	9-14
CIP Summary	9-16
 CHAPTER 10 - FINANCE	
Introduction	10-1
Existing Service Rates	10-1
Existing Service Connection Charges	10-3
Financial Status of the Water and Wastewater Utilities	10-4
Capital Improvement Project Funding	10-7
Rate Impacts	10-7

LIST OF TABLES

<u>No.</u>	<u>Table</u>	<u>Page</u>
E-1	Projected Sewer Service Study Area Population and Employment.....	E-2
E-2	KCDNR 2001/2002 I/I Flow Monitoring Results	E-3
E-3	Summary of Wastewater Flow Design Criteria	E-4
E-4	Potential Uses for Reclaimed Water	E-5
E-5	Summary of Undersized Pipes.....	E-6
E-6	Summary of ULID-5 Repairs Identified in the Television Inspection	E-8
1-1	Historical District Timeline	1-3
2-1	District Policies	2-10
2-2	Other District Policies	2-10
3-1	Priority Anadromous and Resident Fish Presence.....	3-8
3-2	Land Use Designation for the Northshore Utility District.....	3-9
3-3	Sewer Service Study Area Land Use Designation.....	3-10
3-4	Current and Projected District Population Based on TAZ Projections.....	3-16
3-5	Projected Sewer Service Study Area Population and Employment.....	3-18
3-6	Buildout Population for the Sewer Service Study Area by Zoning Classification.....	3-18
3-7	Projected Sewer Service Study Area Population and Employment.....	3-19
4-1	Lift Station Inventory.....	4-4
4-2	Lift Station Run Time Meter Data	4-5
4-3	Force Main Inventory	4-6
4-4	Grinder Pump Station Run Time Meter Data	4-7
4-5	Collection System Size and Year Placed in Service	4-9
4-6	Collection System Pipe Material and Year Placed in Service	4-10
4-7	Collection System Size and Pipe Material.....	4-11
5-1	Sewer Service Connections by Customer Class (2000-2005)	5-4
5-2	Percent of Sewer Service Connections per Municipal Entity (2005)	5-5
5-3	Historical Per Capita Residential Winter Water Consumption.....	5-6
5-4	Nonresidential Winter Water Consumption.....	5-7
5-5	KCDNR 2001/2002 I/I Flow Monitoring Results	5-9
5-6	District Flow Monitoring Results	5-13
5-7	Flow Monitoring Comparison.....	5-13
5-8	Peak Hour Factor for Basins NUD 024, NUD 026, NUD 036, NUD 040, and NUD 049	5-15
5-9	Summary of Wastewater Flow Design Criteria	5-16
5-10	Domestic ERUs and Wastewater Production	5-16
5-11	Commercial ERUs and Wastewater Production	5-17
5-12	Inflow and Infiltration.....	5-17
5-13	District ERUs and Wastewater Production.....	5-17
5-14	Setback Distances for Class A Reclaimed Water in the State of Washington	5-21

5-15	KCDNR Projected Peak Day Reclaimed Water Demand.....	5-22
5-16	Reclaimed Water System Capacity.....	5-22
5-17	Potential Uses for Reclaimed Water.....	5-23
6-1	Modeled Lift Stations and Force Mains.....	6-4
6-2	Collection System Information.....	6-6
6-3	TAZ Growth Rate Projections.....	6-9
7-1	Facility Performance Evaluation and Maintenance.....	7-5
7-2	Lift Station Maintenance Schedule.....	7-6
7-3	Generator Maintenance Schedule.....	7-7
8-1	Summary of Undersized Pipes.....	8-3
8-2	Lift Station Results.....	8-4
8-3	Summary of ULID-5 Repairs Identified in the Television Inspection.....	8-5
8-4	Unsewered Areas.....	8-6
8-5	Summary of ULID-5 Repairs Identified in the Television Inspection.....	8-11
9-1	Miscellaneous Capital Improvements.....	9-4
9-2	Sewer Extension Capital Improvements 2007 through 2023.....	9-5
9-3	Lift Station Capital Improvements.....	9-8
9-4	Infiltration and Inflow Investigation.....	9-9
9-5	Gravity Line Replacement Capital Improvements.....	9-14
9-6	Manhole Rehabilitation Projects.....	9-15
9-7	Capital Improvement Plan Summary.....	9-17
10-1	Bimonthly Base Charge by Customer Class.....	10-2
10-2	Bimonthly Usage Rates.....	10-3
10-3	Water and Wastewater Connection Charges.....	10-4
10-4	Fire Protection Charges.....	10-4
10-5	Summary of Income and Expenses.....	10-6

LIST OF FIGURES

<u>No.</u>	<u>Figure</u>	<u>Page or Follows Page</u>
1-1	Vicinity Map.....	1-4
1-2	Aerial Photograph.....	1-4
3-1	Sewer Service Area Map.....	3-2
3-2	Topographic Map.....	3-4
3-3	Sensitive Areas Map.....	3-4
3-4	Floodplain Map.....	3-6
3-5	Geology and Soils Map.....	3-6
3-6	Land Use and Zoning Map.....	3-8
3-7	Water System Map.....	3-10
3-8	City Limits and UGA Boundaries Map.....	3-10
3-9	Transportation Analysis Zones.....	3-16
4-1	Lift Station Schematic.....	4-2
4-2	Collection System.....	4-2
4-3	SCADA System Graphical Interface Screen.....	4-8

5-1	KCDNR I/I Flow Monitoring Locations.....	5-8
5-2	KCDNR I/I Flow Monitoring Results	5-12
5-3	I/I Basins	5-12
5-4	Brightwater Reclaimed Water Service Areas	5-18
5-5	Potential Water Reuse Sites	5-18
6-1	Modeled Basins.....	6-4
7-1	Organization Chart.....	7-2
8-1	Modeled Results.....	8-2
8-2	Modeled Results with Decreased I/I.....	8-2

LIST OF APPENDICES

Appendix A – Comments from Neighboring Cities and Municipalities
Appendix B – SEPA Checklist
Appendix C – Design Standards
Appendix D – Interlocal Agreements
Appendix E – Woodinville Water District 2006 Draft General Sewer Plan Review Comments
Appendix F – Lift Station Run Time Data
Appendix G – Flow Monitoring Study
Appendix H – Manhole Inspections, TV Inspections, and Smoke Testing
Appendix I – Sewer Hydraulic Model Manual
Appendix J – Snohomish County Projections
Appendix K – Capacity, Management, Operation, and Maintenance
Appendix L – Model Results
Appendix M – Draft CIPP Sewer Rehabilitation Projects November 2006
Appendix N – Sewer Manhole Rehabilitation Project Plans and Specifications
Appendix O – Comprehensive Emergency Response Plan Summary
Appendix P – Detailed Cost Estimates
Appendix Q – Rate Resolution and Financial Information
Appendix R – Funding Sources