

THE

Plant



A Companion to the *Choosing the Right Plants* Natural Lawn & Garden Guide

a better way to beautiful



Waterwise garden by Stacie Crooks

Discover a *better* way to beautiful!

This plant list is a new companion to *Choosing the Right Plants*, one of the *Natural Lawn & Garden Guides* produced by the Saving Water Partnership (see the back panel to request your free copy). These guides will help you garden in balance with nature, so you can enjoy a beautiful yard that's healthy, easy to maintain and good for the environment.

When choosing plants, we often think about factors like size, shape, foliage and flower color. But the most important consideration should be whether a site provides the conditions a specific plant needs to thrive. Soil type, drainage, sun and shade—all affect a plant's health and, as a result, its appearance and maintenance needs.

The list on the following pages contains just some of the many plants that can be happy here in the temperate Pacific Northwest, organized by several key themes. A number of these plants are Great Plant Picks (●) selections, chosen because they are vigorous and easy to grow in Northwest gardens, while offering reasonable resistance to pests and diseases, as well as other attributes. (For details about the GPP program and to find additional reference materials, refer to *Resources & Credits* on page 12.)

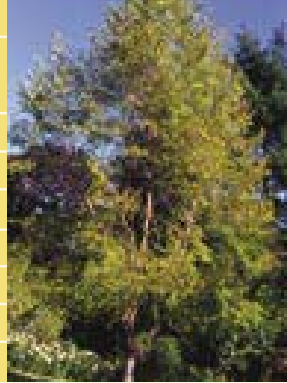
Remember, this plant list is just a starting point. The more information you have about your garden's conditions and a particular plant's needs before you purchase a plant, the better. By creating a plan and selecting plants wisely, you'll avoid costly errors, reduce maintenance and enjoy a better way to a beautiful, healthy garden.

Wet Winter/Dry Summer Plants

The following plants are some of the best at faring well in very wet winter soils—often due to slow drainage or constant seepage—and dry summer soils. Plants with an asterisk* can even handle standing water; all will thrive with good summer drainage. Refer to page 12 for additional resources to help you find plants that match your garden's conditions.

Trees

		Sun	Partial Shade	Shade	Deciduous Evergreen	Mature Tree Heights
● <i>Acer circinatum</i>	VINE MAPLE	☀	☀	☁	↕	small; great fall color
● <i>Betula albosinensis</i> var. <i>septentrionalis</i>	CHINESE RED BIRCH	☀	☀		↕	medium
<i>Betula nigra</i>	RIVER BIRCH	☀	☀		↕	large
● <i>Betula utilis</i> var. <i>jacquemontii</i>	HIMALAYAN WHITE BIRCH	☀	☀		↕	medium; gorgeous bark
<i>Crataegus laevigata</i> and cultivars	ENGLISH HAWTHORN	☀	☀		↕	small
<i>Liquidambar styraciflua</i>	AMERICAN SWEET GUM	☀	☀		↕	large
● <i>Metasequoia glyptostroboides</i> *	DAWN REDWOOD	☀	☀		↕	large; deciduous conifer
<i>Pinus contorta</i> var. <i>contorta</i>	SHORE PINE	☀			▲	large
<i>Quercus palustris</i>	PIN OAK	☀			↕	large



Betula albosinensis
var. *septentrionalis*

Shrubs

<i>Aronia arbutifolia</i>	RED CHOKEBERRY	☀	☀		↕	autumn berries
<i>Aronia melanocarpa</i>	BLACK CHOKEBERRY	☀	☀		↕	autumn berries
<i>Aronia × prunifolia</i>	PURPLE CHOKEBERRY	☀	☀		↕	autumn berries
● <i>Berberis darwinii</i>	DARWIN'S BARBERRY	☀	☀		▲	dense habit
● <i>Berberis thunbergii</i> and cultivars	JAPANESE BARBERRY	☀	☀		↕	'Rose Glow' is a GPP
● <i>Cornus alba</i> and cultivars*	REDTWIG DOGWOOD	☀	☀		↕	'Elegantissima' is a GPP
<i>Cornus stolonifera</i> and cultivars*	RED OSIER DOGWOOD	☀	☀		↕	twig color best in sun
<i>Gaultheria shallon</i>	SALAL	☀	☀		▲	forms a thicket
● <i>Myrica californica</i>	CALIFORNIA WAX MYRTLE	☀	☀		▲	birds like the berries
● <i>Physocarpus opulifolius</i>	PURPLELEAF NINEBARK	☀			↕	'Diabolo' is a GPP
<i>Potentilla fruticosa</i>	SHRUBBY CINQUEFOIL	☀			↕	long bloomtime
● <i>Sambucus nigra</i> and cultivars	BLACK ELDER	☀	☀		↕	'Gerda' is a GPP
<i>Spiraea douglasii</i>	DOUGLAS'S SPIREA	☀			↕	vigorous; forms a thicket
<i>Spiraea × vanhouttei</i>	BRIDAL WREATH SPIREA	☀			↕	pretty white flowers
<i>Symphoricarpos albus</i>	SNOWBERRY	☀	☀		↕	white berries; forms a thicket



Berberis darwinii

● = a Great Plant Picks selection

Perennials, Grasses and More

		Sun	Partial Shade	Shade	Deciduous Evergreen	
☛ <i>Acorus gramineus</i> 'Ogon'*	GOLD VARIEGATED SWEETFLAG	☀	☀	☁	▲	semi-evergreen; brighter in sun
☛ <i>Anemone nemorosa</i>	WOOD ANEMONE	☀	☀	☁	▲	dormant in summer
<i>Bergenia</i> species and hybrids		☀	☀	☁	▲	bold leaves
☛ <i>Blechnum penna-marina</i>	ALPINE WATER FERN	☀	☀	☁	▲	in sun, needs more water
☛ <i>Blechnum spicant</i>	DEER FERN	☀	☀	☁	▲	in sun, needs more water
☛ <i>Carex</i> 'Ice Dance'*	VARIEGATED SEDGE	☀	☀	☁	▲	vigorous groundcover
☛ <i>Carex oshimensis</i> 'Evergold'*	VARIEGATED JAPANESE SEDGE	☀	☀	☁	▲	
<i>Erythronium revolutum</i>	PINK FAWN LILY		☀		▲	dormant in summer
☛ <i>Erythronium</i> 'Pagoda'	YELLOW FAWN LILY		☀		▲	dormant in summer
<i>Hemerocallis</i> cultivars	DAYLILY	☀			▲	needs water until flower buds develop
<i>Luzula nivea</i>	SNOWY WOODRUSH	☀	☀		▲	unusual texture
<i>Luzula sylvatica</i>	GREATER WOODRUSH		☀	☁	▲	best with occasional summer water
☛ <i>Osmunda regalis</i> and cultivars*	ROYAL FERN			☁	▲	best with occasional summer water



Acorus gramineus 'Ogon'

☛ <i>Polystichum munitum</i>	WESTERN SWORD FERN	☀	☀	☁	▲	best with occasional summer water
☛ <i>Polystichum polyblepharum</i>	JAPANESE TASSEL FERN			☁	▲	best with occasional summer water
☛ <i>Polystichum setiferum</i> Divisilobum Group and others	SOFT SHIELD FERN		☀	☁	▲	best with occasional summer water
<i>Waldsteinia ternata</i>	BARREN STRAWBERRY	☀	☀	☁	▲	semi-evergreen; out-competes many weeds
<i>Limnanthes douglasii</i>	POACHED EGG PLANT	☀			▲	spreading, self-seeding; dormant in summer



Polystichum munitum

☛ = a Great Plant Picks selection

NOTES:

Moisture-Loving Plants

Here are a variety of plants that can thrive with moist or wet conditions throughout the year, including poor drainage. Plants with an asterisk* can even tolerate standing water. Refer to page 12 for additional resources to help you find plants that match your garden's conditions.

Trees

		Sun	Partial Shade	Shade	Deciduous Evergreen	Mature Tree Heights
					↕	small up to 30 feet tall medium 30 to 70 feet tall large more than 70 feet tall
<i>Amelanchier canadensis</i>	SERVICEBERRY	☀	☀		↕	small tree or shrub
● <i>Betula albosinensis</i> var. <i>septentrionalis</i>	CHINESE RED BIRCH	☀	☀		↕	medium
<i>Betula nigra</i>	RIVER BIRCH	☀	☀		↕	large
● <i>Betula utilis</i> var. <i>jacquemontii</i>	HIMALAYAN WHITE BIRCH	☀	☀		↕	medium
<i>Liquidambar styraciflua</i>	AMERICAN SWEET GUM	☀	☀		↕	large
● <i>Metasequoia glyptostroboides</i> *	DAWN REDWOOD	☀	☀		↕	large; deciduous conifer
● <i>Nyssa sinensis</i> *	CHINESE TUPELO	☀	☀		↕	medium
● <i>Nyssa sylvatica</i> *	BLACK GUM	☀	☀		↕	medium
<i>Taxodium distichum</i> *	BALD CYPRESS	☀	☀		↕	large; deciduous conifer

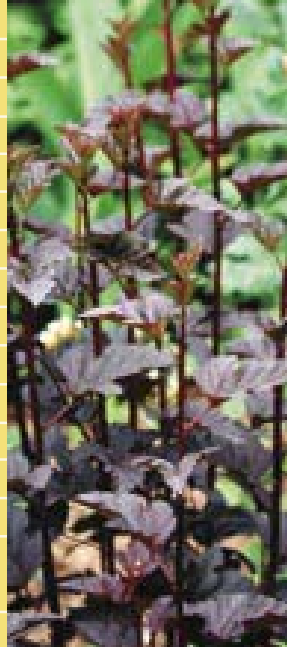


Betula albosinensis
var. *septentrionalis*

NOTES:

Shrubs

<i>Aronia arbutifolia</i>	RED CHOKEBERRY	☀	☀		↕	autumn berries
<i>Aronia melanocarpa</i>	BLACK CHOKEBERRY	☀	☀		↕	autumn berries
<i>Aronia × prunifolia</i>	PURPLE CHOKEBERRY	☀	☀		↕	autumn berries
<i>Calycanthus floridus</i>	CAROLINA ALLSPICE	☀	☀		↕	interesting flowers
<i>Clethra alnifolia</i>	SWEET PEPPERBUSH		☀		↕	fragrant pink flowers
● <i>Cornus alba</i> and cultivars*	REDTWIG DOGWOOD	☀	☀		↕	'Elegantissima' is a GPP
<i>Cornus stolonifera</i> and cultivars*	RED OSIER DOGWOOD	☀	☀		↕	sun for best twig color
<i>Lonicera involucrata</i>	BLACK TWINBERRY	☀	☀		↕	forms a thicket
● <i>Myrica californica</i>	CALIFORNIA WAX MYRTLE	☀	☀		▲	forms a thicket
● <i>Physocarpus opulifolius</i> and cultivars	NINEBARK	☀			↕	'Diabolo' is a GPP
<i>Salix discolor</i> *	PUSSY WILLOW	☀			↕	forms a thicket
<i>Salix purpurea</i> *	ARCTIC WILLOW	☀			↕	forms a thicket
● <i>Sambucus nigra</i>	BLACK ELDERBERRY	☀	☀		↕	'Gerda' is a GPP
<i>Sambucus racemosa</i>	RED ELDERBERRY	☀			↕	glossy red fruit
<i>Sorbaria sorbifolia</i>	FALSE SPIREA	☀	☀		↕	forms a thicket; remove suckers to restrict spread
<i>Vaccinium corymbosum</i>	HIGH BUSH BLUEBERRY	☀	☀		↕	delicious fruit



Physocarpus opulifolius
'Diabolo'

● = a Great Plant Picks selection

Perennials,
Grasses and More

		Sun	Partial Shade	Shade	Deciduous Evergreen	
● <i>Acorus gramineus</i> 'Ogon'*	GOLDEN VARIEGATED SWEETFLAG	☀	☀	☁	▲	semi-evergreen; sun for brightest color
● <i>Adiantum aleuticum</i>	WESTERN MAIDENHAIR FERN			☁	▲	usually sold as <i>A. pedatum</i>
<i>Astilbe</i> (all)*	ASTILBE	☀	☀	☁	▲	in sun, needs more water
● <i>Blechnum spicant</i>	DEER FERN	☀	☀	☁	▲	in sun, needs more water
<i>Caltha palustris</i> *	MARSH MARIGOLD	☀			▲	yellow flowers
● <i>Carex</i> 'Ice Dance'*	VARIEGATED SEDGE	☀	☀	☁	▲	vigorous groundcover
● <i>Carex elata</i> 'Aurea'*	BOWLES' GOLDEN SEDGE	☀	☀	☁	▲	sun for brightest color
● <i>Carex oshimensis</i> 'Evergold'*	VARIEGATED JAPANESE SEDGE	☀	☀	☁	▲	
● <i>Dryopteris wallichiana</i>	WALLICH'S WOOD FERN	☀	☀	☁	▲	tall, glossy fronds
<i>Gunnera manicata</i>	GIANT RHUBARB	☀	☀		▲	protect from drying winds
● <i>Hosta</i> (all)		☀	☀		▲	'June' and 'Sum and Substance' are slug-resistant GPPs
<i>Iris ensata</i> and cultivars*	JAPANESE IRIS	☀	☀		▲	gorgeous flowers
<i>Iris laevis</i> and cultivars	JAPANESE IRIS	☀	☀		▲	gorgeous flowers
<i>Iris versicolor</i>	BLUE FLAG	☀	☀		▲	gorgeous flowers
<i>Ligularia dentata</i> *	GOLDEN GROUNDSEL		☀		▲	avoid midday sun



Carex 'Ice Dance'

<i>Lobelia cardinalis</i>	CARDINAL FLOWER	☀	☀		▲	short-lived perennial
<i>Lysimachia nummularia</i> 'Aurea'*	GOLDEN CREEPING JENNY	☀	☀		▲	spreads quickly
<i>Matteuccia struthiopteris</i>	OSTRICH FERN	☀	☀	☁	▲	spreads vigorously
<i>Mimulus cardinalis</i> *	SCARLET MONKEY FLOWER	☀	☀	☁	▲	dappled shade
<i>Osmunda cinnamomea</i>	CINNAMON FERN	☀	☀	☁	▲	
● <i>Osmunda regalis</i> and cultivars*	ROYAL FERN	☀	☀	☁	▲	
<i>Primula beesiana</i> *	CANDELABRA PRIMROSE	☀	☀	☁	▲	can be semi-evergreen
<i>Primula bulleyana</i> *	CANDELABRA PRIMROSE	☀	☀	☁	▲	can be semi-evergreen
<i>Primula denticulata</i> *	DRUMSTICK PRIMROSE	☀	☀	☁	▲	can be semi-evergreen
<i>Primula elatior</i> *	OXLIP	☀	☀	☁	▲	can be semi-evergreen
<i>Primula japonica</i> and cultivars*	JAPANESE PRIMROSE	☀	☀	☁	▲	
<i>Rodgersia pinnata</i> *	RODGERSIA	☀	☀		▲	
● <i>Scrophularia auriculata</i> 'Variegata'*	WATER FIGWORT	☀	☀		▲	cut back mid-summer for fresh flush of foliage
● <i>Thalictrum delavayi</i> 'Hewitt's Double'	DOUBLE MEADOW RUE	☀	☀		▲	airy leaves and flowers
<i>Viola glabella</i>	STREAM VIOLET		☀		▲	can be semi-evergreen
<i>Zantedeschia aethiopica</i> *	CALLA LILY	☀			▲	evergreen in mild winters



Carex elata 'Aurea'

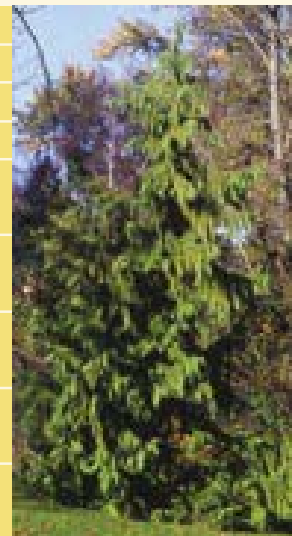
● = a Great Plant Picks selection

Favorite Pacific Northwest Native Plants

These are among the most garden-worthy native plants available in local nurseries. When buying natives, ask to make sure the plants are nursery-propagated to avoid harming natural plant environments in the wild. Refer to page 12 for additional resources to help you find plants that match your garden's conditions.

Trees

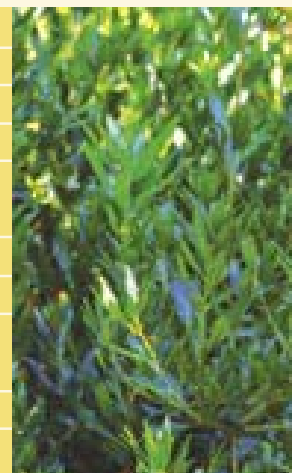
		Sun	Partial Shade	Shade	Deciduous ▲ Evergreen	Mature Tree Heights small up to 30 feet tall medium 30 to 70 feet tall large more than 70 feet tall
● <i>Abies grandis</i>	GRAND FIR	☀	☀		▲	large; drought tolerant
<i>Abies procera</i>	NOBLE FIR	☀	☀		▲	large
● <i>Acer circinatum</i>	VINE MAPLE	☀	☀	☁	▲	small; great fall color
● <i>Calocedrus decurrens</i>	INCENSE CEDAR	☀			▲	large; drought tolerant
● <i>Chamaecyparis nootkatensis</i>	WEeping YELLOW CEDAR	☀			▲	large; drought tolerant; 'Pendula' is a GPP
<i>Malus fusca</i>	PACIFIC CRABAPPLE	☀	☀		▲	large shrub or small tree; tolerates standing water
<i>Pinus contorta</i> var. <i>contorta</i>	SHORE PINE	☀			▲	large; tolerates winter wet, summer drought
<i>Quercus garryana</i>	GARRY OAK	☀			▲	small; needs excellent drainage
● <i>Tsuga mertensiana</i>	MOUNTAIN HEMLOCK	☀	☀		▲	small in garden setting; drought tolerant



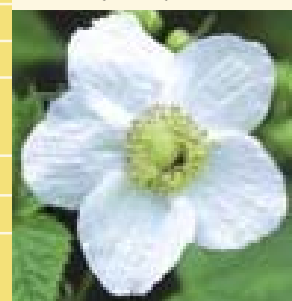
Chamaecyparis nootkatensis
'Pendula'

Shrubs

<i>Acer glabrum</i>	DOUGLAS MAPLE	☀			▲	shrub or small tree
<i>Amelanchier alnifolia</i>	SERVICEBERRY	☀	☀		▲	well-drained soil
<i>Arctostaphylos uva-ursi</i>	KINNIKINNICK	☀	☀		▲	groundcover
<i>Cornus stolonifera</i>	RED OSIER DOGWOOD	☀	☀		▲	moist or dry soil
<i>Gaultheria shallon</i>	SALAL	☀	☀	☁	▲	tolerates dry soil once established
<i>Holodiscus discolor</i>	OCEAN SPRAY	☀	☀		▲	forms a thicket
<i>Ledum groenlandicum</i>	LABRADOR TEA	☀	☀		▲	moist soil
<i>Lonicera involucrata</i>	BLACK TWINBERRY	☀	☀		▲	forms a thicket; drought tolerant
● <i>Mahonia nervosa</i>	CASCADE OREGON GRAPE	☀	☀	☁	▲	drought tolerant
● <i>Myrica californica</i>	CALIFORNIA WAX MYRTLE	☀	☀		▲	tolerates winter wet, summer drought
<i>Paxistima myrsinites</i>	FALSEBOX	☀	☀		▲	compact shrub
<i>Philadelphus lewisii</i>	MOCK ORANGE	☀	☀		▲	fragrant flowers
<i>Rhododendron macrophyllum</i>	PACIFIC COAST RHODODENDRON	☀	☀		▲	moist to fairly dry sites
<i>Rhododendron occidentale</i>	WESTERN AZALEA	☀	☀		▲	needs good drainage
<i>Rosa nutkana</i>	NOOTKA ROSE	☀			▲	forms a thicket; pink flowers
<i>Rubus parviflorus</i>	THIMBLEBERRY	☀	☀		▲	forms a thicket; moist or dry soils



Myrica californica



Rubus parviflorus

● = a Great Plant Picks selection

Shrubs (cont.)

		Sun	Partial Shade	Shade	Deciduous Evergreen	
<i>Rubus spectabilis</i>	SALMONBERRY	☀	☀		↕	forms a thicket; moist soils
<i>Sambucus nigra</i> subsp. <i>cerulea</i>	BLUE ELDERBERRY	☀	☀		↕	blue fruits
<i>Sambucus racemosa</i> subsp. <i>pubens</i>	RED ELDERBERRY	☀	☀		↕	bright red fruits
<i>Spiraea douglasii</i> subsp. <i>douglasii</i>	HARDHACK	☀	☀		↕	forms a thicket; aggressive; moist to wet soils
<i>Symphoricarpos albus</i>	COMMON SNOWBERRY	☀	☀		↕	forms a thicket; white berries
● <i>Vaccinium ovatum</i>	EVERGREEN HUCKLEBERRY	☀	☀		▲	delicious blue berries
<i>Vaccinium parvifolium</i>	RED HUCKLEBERRY	☀	☀		↕	tangy red berries



Rubus spectabilis

NOTES:

Perennials, Grasses and More

● <i>Adiantum aleuticum</i>	WESTERN MAIDENHAIR FERN	☀	☀	☁	↕	in sun, needs more water
<i>Allium cernuum</i>	NODDING ONION	☀			↕	bulb; pink flowers
<i>Antennaria microphylla</i>	ROSY PUSSYTOES	☀			▲	also called <i>A. rosea</i>
<i>Aquilegia formosa</i>	RED COLUMBINE	☀	☀		↕	red-and-yellow flowers
<i>Aruncus dioicus</i>	GOAT'S BEARD	☀	☀		↕	
<i>Asarum caudatum</i>	WILD GINGER			☁	↕	spreading groundcover
● <i>Blechnum spicant</i>	DEER FERN	☀	☀	☁	▲	in sun, needs more water
<i>Camassia leichtlinii</i>	LEICHTLIN'S CAMAS	☀	☀	☁	↕	bulb; blue or white flowers
● <i>Camassia quamash</i>	COMMON CAMAS	☀	☀		↕	bulb; tolerates winter wet, summer drought
<i>Campanula rotundifolia</i>	COMMON HAREBELL	☀	☀		↕	small perennial
<i>Cornus canadensis</i>	BUNCHBERRY		☀	☁	↕	slow-growing groundcover
<i>Dicentra formosa</i>	PACIFIC BLEEDING HEART			☁	↕	spreads quickly; dormant in summer
<i>Disporum hookeri</i>	HOOKER'S FAIRYBELLS			☁	↕	dainty white flowers
<i>Dodecatheon pulchellum</i>	FEW-FLOWERED SHOOTINGSTAR	☀	☀		↕	moist soil in sun
<i>Eriophyllum lanatum</i>	OREGON SUNSHINE	☀			↕	drought tolerant
<i>Fragaria chiloensis</i>	BEACH STRAWBERRY	☀			▲	spreading groundcover
<i>Gymnocarpium dryopteris</i>	OAK FERN			☁	↕	also called <i>G. disjunctum</i>



Blechnum spicant

● = a Great Plant Picks selection

Perennials, Grasses and More (cont.)

		Sun	Partial Shade	Shade	Deciduous Evergreen	
<i>Heuchera micrantha</i>	SMALL-FLOWERED ALUMROOT	☀	☀		▲	semi-evergreen
<i>Iris tenax</i>	TOUGHLEAF IRIS	☀	☀		▲	
<i>Lonicera ciliosa</i>	WESTERN TRUMPET HONEYSUCKLE	☀	☀		▲	climbing vine
<i>Maianthemum dilatatum</i>	FALSE LILY-OF-THE-VALLEY			☁	▲	spreading groundcover; dormant in summer
<i>Oxalis oregano</i>	OREGON OXALIS			☁	▲	also evergreen forms
● <i>Polystichum munitum</i>	SWORD FERN	☀	☀	☁	▲	drought tolerant once established
<i>Sedum divergens</i>	SPREADING STONECROP	☀			▲	round succulent leaves
<i>Sedum oreganum</i>	OREGON STONECROP	☀	☀		▲	oval succulent leaves
<i>Sedum spathulifolium</i>	BROADLEAF STONECROP	☀	☀		▲	flattened gray leaves
<i>Sisyrinchium californicum</i>	GOLDEN-EYED GRASS	☀			▲	semi-evergreen; self-seeds
<i>Sisyrinchium douglasii</i>	SATIN-FLOWER		☀	☁	▲	red-purple flowers
● <i>Smilacina racemosa</i>	FALSE SOLOMON'S SEAL		☀	☁	▲	white flowers; red fruit
<i>Smilacina stellata</i>	STAR-FLOWERED SOLOMON'S SEAL		☀	☁	▲	white flowers; dark blue or reddish-black fruit
<i>Tellima grandiflora</i>	FRINGECUP		☀	☁	▲	moist soil
<i>Thalictrum occidentale</i>	WESTERN MEADOWRUE	☀	☀		▲	blue-green foliage
<i>Tiarella trifoliata</i>	FOAMFLOWER		☀	☁	▲	moist soil



Polystichum munitum



Smilacina racemosa

<i>Tolmiea menziesii</i>	PIGGY-BACK PLANT		☀	☁	▲	moist soil
<i>Trillium ovatum</i>	WESTERN TRILLIUM			☁	▲	dormant in summer
<i>Vancouveria hexandra</i>	INSIDE-OUT FLOWER			☁	▲	dainty groundcover

● = a Great Plant Picks selection

Finding Native Plants

Most retail nurseries sell a variety of native plants. However, some of the selections on the Favorite Pacific Northwest Plants list may be available only from nurseries that specialize in native plants. To identify native plant nurseries, go to the Washington Native Plant Society (WNPS) website at www.wnps.org and click on Gardening, then scroll down to Native Plant Nurseries. You can also purchase natives at the WNPS plant sales, also listed on their site. Or, simply ask your favorite nursery if they will order native plants for you.

For descriptions and photos of many native plants, go to the Master Gardener website at <http://gardening.wsu.edu/nwnative/>

Drought-Tolerant Plants

The following plants can survive with little or no supplemental watering—besides rainfall—after they are established, a process that usually takes 2 to 3 years. As a general rule, these plants need good drainage in winter. Note that the plants on the Wet Winter/Dry Summer Plants list are also drought-tolerant. Refer to page 12 for additional resources to help you find plants that match your garden's conditions.

Trees

			Sun	Partial Shade	Shade	Deciduous ▲ Evergreen	Mature Tree Heights
							small up to 30 feet tall medium 30 to 70 feet tall large more than 70 feet tall
● <i>Acer buergerianum</i>	TRIDENT MAPLE		☀			▲	small; slow growing
● <i>Acer griseum</i>	PAPERBARK MAPLE		☀	☀		▲	small; peeling bark
<i>Acer tataricum</i> subsp. <i>ginnala</i>	AMUR MAPLE		☀	☀		▲	small; suckering tree
● <i>Acer triflorum</i>	ROUGHBARK MAPLE		☀	☀	☁	▲	small
● <i>Betula albosinensis</i> var. <i>septentrionalis</i>	CHINESE RED BIRCH		☀	☀		▲	medium
● <i>Betula utilis</i> var. <i>jacquemontii</i>	HIMALAYAN WHITE BIRCH		☀	☀		▲	medium; white bark
● <i>Calocedrus decurrens</i>	INCENSE CEDAR		☀			▲	large; conifer
<i>Carpinus betulus</i> 'Fastigiata'	EUROPEAN HORNBEAM		☀	☀		▲	medium; slow growing
● <i>Cornus mas</i>	CORNELIAN CHERRY		☀	☀		▲	shrub or small tree
● <i>Crataegus</i> × <i>lavallei</i>	LAVALLE'S HAWTHORN		☀			▲	small; showy fruit
● <i>Fagus sylvatica</i> 'Purple Fountain'	COLUMNAR WEEPING COPPER BEECH		☀			▲	small; columnar
● <i>Fagus sylvatica</i> var. <i>heterophylla</i> 'Asplenifolia'	FERNLEAF BEECH		☀			▲	medium
● <i>Ginkgo biloba</i> 'Autumn Gold'	MAIDENHAIR TREE		☀			▲	large



Ginkgo biloba
'Autumn Gold'

● <i>Koelreuteria paniculata</i>	GOLDENRAIN TREE		☀			▲	medium
● <i>Parrotia persica</i>	PERSIAN IRONWOOD		☀			▲	medium
● <i>Picea omorika</i>	SERBIAN SPRUCE		☀			▲	medium; slender conifer
● <i>Picea orientalis</i>	ORIENTAL SPRUCE		☀			▲	large; conifer
● <i>Pinus leucodermis</i>	BOSNIAN PINE		☀			▲	medium; conifer
● <i>Pinus parviflora</i> f. <i>glauca</i>	BLUE-NEEDED JAPANESE WHITE PINE		☀			▲	medium; conifer
● <i>Pyrus salicifolia</i> 'Pendula'	WEEPING WILLOWLEAF PEAR		☀			▲	small; weeping form
● <i>Sequoiadendron giganteum</i> and cultivars	GIANT SEQUOIA		☀			▲	large; 'Glaucum' and 'Pendulum' are GPPs
● <i>Trachycarpus fortunei</i>	WINDMILL PALM		☀	☀		▲	medium; slow growing; protect when young
● <i>Tsuga mertensiana</i>	MOUNTAIN HEMLOCK		☀	☀	☁	▲	small in garden setting; conifer



Trachycarpus fortunei

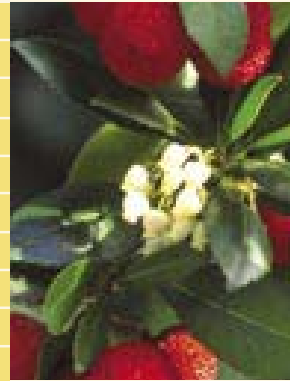
● = a Great Plant Picks selection

NOTES:

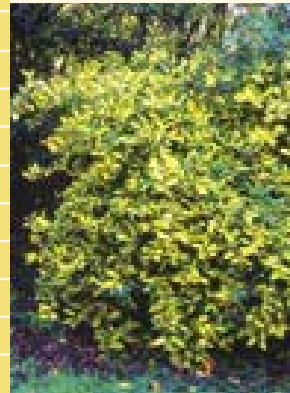
Drought-Tolerant Plants

Shrubs

		Sun	Partial Shade	Shade	Deciduous Evergreen	
☛ <i>Arbutus unedo</i>	STRAWBERRY TREE	☀	☀		▲	shrub or small tree
☛ <i>Berberis darwinii</i>	DARWIN'S BARBERRY	☀	☀		▲	blooms better in sun
<i>Ceanothus</i> 'Julia Phelps'	CALIFORNIA LILAC	☀			▲	midnight blue flowers
<i>Ceanothus</i> 'Victoria'	CALIFORNIA LILAC	☀			▲	bright blue flowers
<i>Ceanothus</i> 'Puget Blue'	CALIFORNIA LILAC	☀			▲	bright blue flowers
<i>Choisya</i> 'Aztec Pearl'	MEXICAN MOCK ORANGE	☀	☀		▲	fragrant white flowers
☛ <i>Cistus</i> × <i>hybridus</i>	WHITE ROCKROSE	☀			▲	
☛ <i>Cotinus</i> 'Grace'	HYBRID SMOKETREE	☀			⬆	large burgundy leaves
<i>Cotoneaster dammeri</i>	BEARBERRY COTONEASTER	☀	☀		▲	groundcover
☛ <i>Elaeagnus pungens</i> 'Maculata'	GOLDEN VARIEGATED ELAEAGNUS	☀	☀		▲	fragrant flowers in fall
<i>Hebe</i> 'Emerald Green'		☀			▲	white flowers
<i>Hebe cupressoides</i> 'Boughton Dome'	CYPRESS HEBE	☀			▲	white flowers
<i>Hebe ochracea</i> 'James Stirling'	WHIPCORD HEBE	☀			▲	bronzey foliage
<i>Hebe odora</i> 'New Zealand Gold'		☀			▲	white flowers
<i>Hebe pinguifolia</i>		☀			▲	white flowers
<i>Hebe topiaria</i>		☀			▲	white flowers
☛ <i>Ilex aquifolium</i> 'Ferox Argentea'	HEDGEHOG HOLLY	☀			▲	male clone: no berries
☛ <i>Ilex crenata</i> 'Convexa'	CONVEX LEAF JAPANESE HOLLY	☀	☀		▲	excellent for hedge
☛ <i>Laurus nobilis</i>	BAY LAUREL	☀			▲	excellent for cooking
☛ <i>Mahonia nervosa</i>	CASCADE OREGON GRAPE	☀	☀	☁	▲	blue berries



Arbutus unedo



Elaeagnus pungens
'Maculata'

☛ <i>Nandina domestica</i> 'Gulf Stream'	DWARF HEAVENLY BAMBOO		☀		▲	needs some water in full sun to look its best
☛ <i>Malus toringo</i> subsp. <i>sargentii</i> 'Tina'	DWARF SARGENT'S CRABAPPLE	☀			⬆	disease resistant
☛ <i>Ribes sanguineum</i> and cultivars	FLOWERING CURRANT	☀	☀		⬆	'King Edward VII' and 'White Icicle' are GPPs
<i>Syringa vulgaris</i> and cultivars	COMMON LILAC	☀			⬆	fragrant flowers
☛ <i>Taxus baccata</i> 'Fastigiata'	IRISH YEW	☀	☀	☁	▲	columnar conifer
☛ <i>Taxus baccata</i> 'Repandens'	SPREADING ENGLISH YEW	☀	☀	☁	▲	mounding conifer
☛ <i>Viburnum tinus</i> 'Spring Bouquet'	COMPACT LAURUSTINUS	☀	☀	☁	▲	flowers less in shade



Viburnum tinus
'Spring Bouquet'

Perennials, Grasses and More

☛ <i>Allium cristophii</i>	STAR OF PERSIA	☀	☀		⬆	bulb; sandy soil
☛ <i>Anemone nemorosa</i>	WOOD ANEMONE	☀	☀	☁	⬆	dormant in summer
☛ <i>Asarum europaeum</i>	EUROPEAN WILD GINGER			☁	⬆	creeping groundcover
☛ <i>Agastache</i> 'Blue Fortune'	HYBRID HYSSOP	☀			⬆	long bloomtime
<i>Camassia leichtlinii</i> subsp. <i>leichtlinii</i>	LEICHTLIN'S CAMAS	☀			⬆	bulb; dormant in summer
☛ <i>Crocus tommasinianus</i>	TOMMASINI'S CROCUS	☀			⬆	bulb; dormant in summer
☛ <i>Cyclamen coum</i>	PERSIAN VIOLET	☀			⬆	tuber; dormant in summer



Allium cristophii

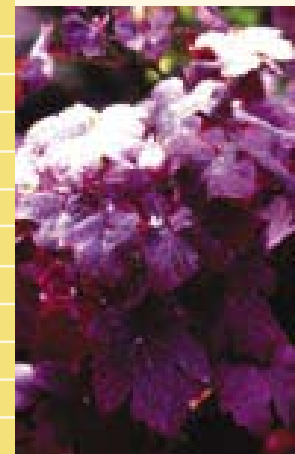
☛ = a Great Plant Picks selection

Perennials,
Grasses and More (cont.)

		Sun	Partial Shade	Shade	Deciduous Evergreen	
● <i>Cyclamen hederifolium</i>	IVYLEAF CYCLAMEN	☀	☀	☁	▲	tuber; dormant in summer
● <i>Crambe maritima</i>	SEA KALE	☀			▲	add lime to soil
<i>Epimedium</i> × <i>versicolor</i> ‘Sulfureum’	BARRENWORT	☀	☀	☁	▲	groundcover
● <i>Euphorbia characias</i> subsp. <i>wulfenii</i>	LARGE MEDITERRANEAN SPURGE	☀	☀		▲	contact with sap may cause rash
● <i>Helenium</i> ‘Moerheim Beauty’	SNEEZEWEED	☀			▲	
● <i>Helictotrichon sempervirens</i>	BLUE OAT GRASS	☀			▲	comb out old leaves; do not cut to ground
● <i>Helleborus argutifolius</i>	CORSICAN HELLEBORE	☀	☀		▲	striking leaves
● <i>Helleborus foetidus</i>	STINKING HELLEBORE	☀	☀	☁	▲	green flowers
● <i>Helleborus</i> × <i>hybridus</i>	LENTEN ROSE	☀	☀	☁	▲	showy flowers
● <i>Lathyrus vernus</i>	SPRING BUSH PEA	☀	☀	☁	▲	charming
● <i>Leptinella squalida</i> ‘Pratt’s Black’	BRASS BUTTONS	☀	☀		▲	creeper for crevices
● <i>Leucanthemum</i> × <i>superbum</i> ‘Becky’	SHASTA DAISY	☀			▲	long bloomtime
<i>Lonicera japonica</i>	JAPANESE HONEYSUCKLE	☀	☀		▲	vine; fragrant flowers
● <i>Miscanthus sinensis</i> ‘Morning Light’	CHINESE SILVERGRASS	☀			▲	cut to ground in March
● <i>Salvia verticillata</i> ‘Purple Rain’	SALVIA	☀			▲	long bloomtime
● <i>Stipa gigantea</i>	GIANT NEEDLE GRASS	☀			▲	trim back in fall
● <i>Vitis vinifera</i> ‘Purpurea’	PURPLELEAF GRAPEVINE	☀	☀		▲	vine; redder in sun



Cyclamen hederifolium



Vitis vinifera
‘Purpurea’

● = a Great Plant Picks selection



Resources & Credits

Books for more plant information

A to Z Encyclopedia of Garden Plants

American Horticultural Society, DK Publishing, Inc., 1996.

Gardening with Native Plants of the Pacific Northwest

by Arthur R. Kruckeberg; University of Washington Press, 1982.

Perfect Plant, Perfect Place

by Roy Lancaster; DK Publishing, Inc., 2002.

Sunset Western Garden Book

Kathleen Norris, ed.; Sunset Publishing Corp., 2001.

Trees and Shrubs for Pacific Northwest Gardens

by John and Carol Grant; Timber Press, Inc., 1990.

Hotlines for gardening questions

Natural Lawn & Garden Hotline **206.633.0224**

Center for Urban Horticulture Plant Answer Line

206.UWPLANT (206.897.5268)

Master Gardener Hotline, King County **206.296.3440**

Websites

Great Plant Picks descriptions and photos www.greatplantpicks.org

Natural Lawn & Garden Care www.savingwater.org

Comprehensive horticultural information www.millerlibrary.org

Washington State University Extension/Master Gardener information

<http://gardening.wsu.edu>

Native plant information (also see page 8) www.wnps.org

<http://gardening.wsu.edu/nwnative>

Photo credits

Cover and waterwise garden photos: Jacqueline Koch

Plant photos: Courtesy Great Plant Picks, Richie Steffen,

Richard Hartlage, Alan Dodson

With thanks to

Center for Urban Horticulture

Furney's Nursery

Molbak's

Piriformis

Rhododendron Species Botanical Garden

Swanson's Nursery

University of British Columbia Botanical Garden

Washington Native Plant Society

Washington State Department of Transportation

A Special Note of Appreciation to

Carolyn Jones and Richie Steffen of the Elisabeth Carey Miller Botanical

Garden and Great Plants Picks for their generous help in creating this

plant list.



Great Plant Picks

The Great Plant Picks (GPP) educational program promotes plants well-suited to Pacific Northwest gardens west of the Cascade Mountains. Each year, noteworthy plants are added to the GPP list, selected by professional horticulturists from Washington, Oregon and British Columbia. GPP is funded by the Pendleton and Elisabeth Miller Charitable Foundation and administered by the staff of the Elisabeth Carey Miller Botanical Garden. For more details, visit:

www.greatplantpicks.org

A decorative horizontal band at the top of the page features a light yellow background with a stylized, repeating pattern of green leaves and stems. The leaves are simple, oval-shaped, and arranged in a flowing, wavy line across the width of the page.

NOTES:

The Natural Lawn & Garden Series



Growing Healthy Soil



Choosing the Right Plants



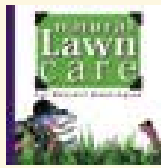
Smart Watering



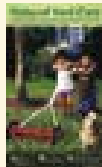
Composting at Home



Natural Pest, Weed & Disease Control



Natural Lawn Care



Natural Yard Care (summary)

Brought to you by your local water providers:

Cedar River Water and Sewer District
City of Bothell
City of Duvall
Coal Creek Utility District
Highline Water District
King County Water District 20
King County Water District 45
King County Water District 49
King County Water District 90
King County Water District 119
King County Water District 125
City of Mercer Island
Northshore Utility District
Olympic View Water and Sewer
Seattle Public Utilities
Shoreline Water District
Soos Creek Water and Sewer District
Woodinville Water District

To request a Natural Lawn & Garden Guide, contact the Natural Lawn & Garden Hotline at 206.633.0224 or at info@lawnandgardenhotline.org, or visit www.savingwater.org



For TTY assistance, please call 206.233.7241. This information can be made available on request to accommodate people with disabilities and those who need language assistance.