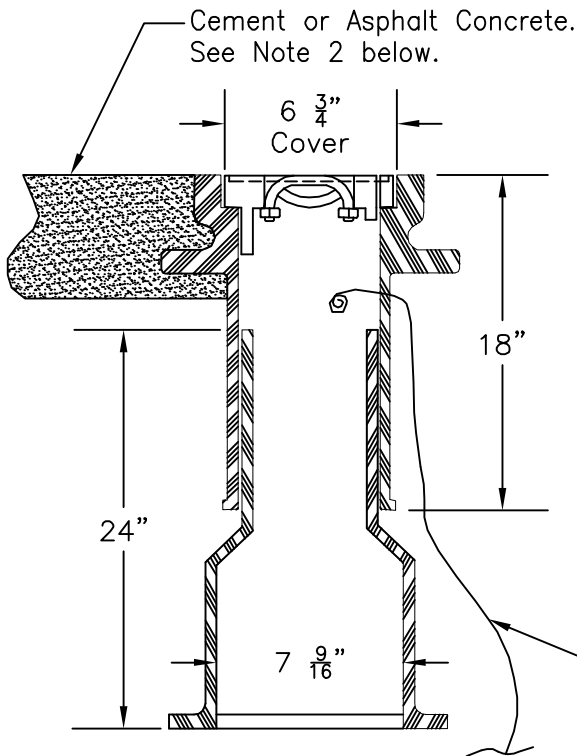
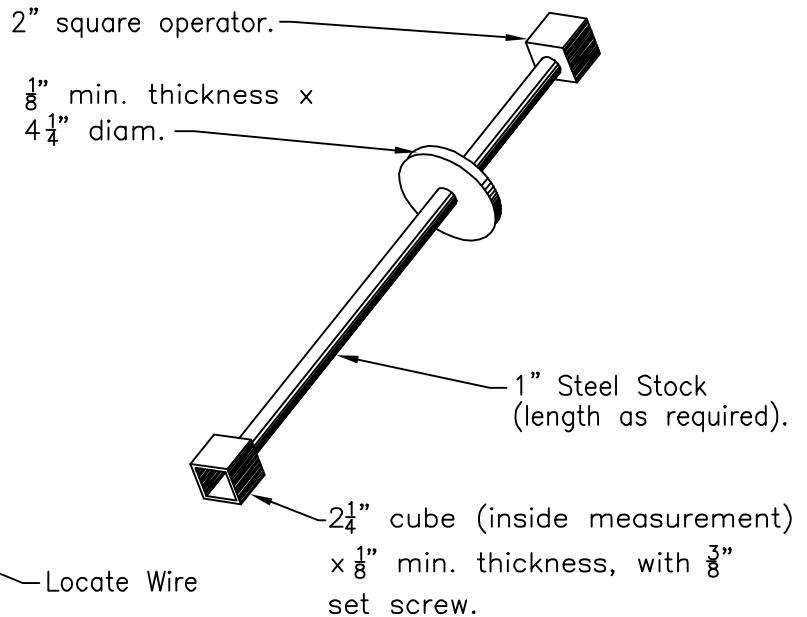


PLAN



VALVE BOX



VALVE OPERATING NUT EXTENSION

Notes:

1. Cast-iron valve box shall be Olympic Foundry part number 045.
2. If valve box is in an unpaved area, provide 1' radius x 4" minimum depth cement or asphalt concrete paving around valve box.

Notes:

1. Length as required to put operating nut two (2) feet from finished grade.
2. Extensions are required when valve nut is more 4.5' below finished grade.
3. Extensions to be a minimum of one (1) foot long.
4. One (1) Extension per valve.

VALVE BOX & OPERATING NUT EXTENSION

NOT TO SCALE

Detail Approvals
 Engineer GSM
 Manager DPK

**NORTHSHORE UTILITY DISTRICT
 STANDARD WATER DETAILS**

11

August 2011
 W-11(ValveBox).dwg