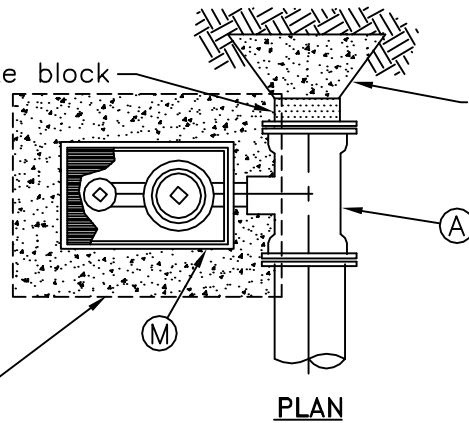


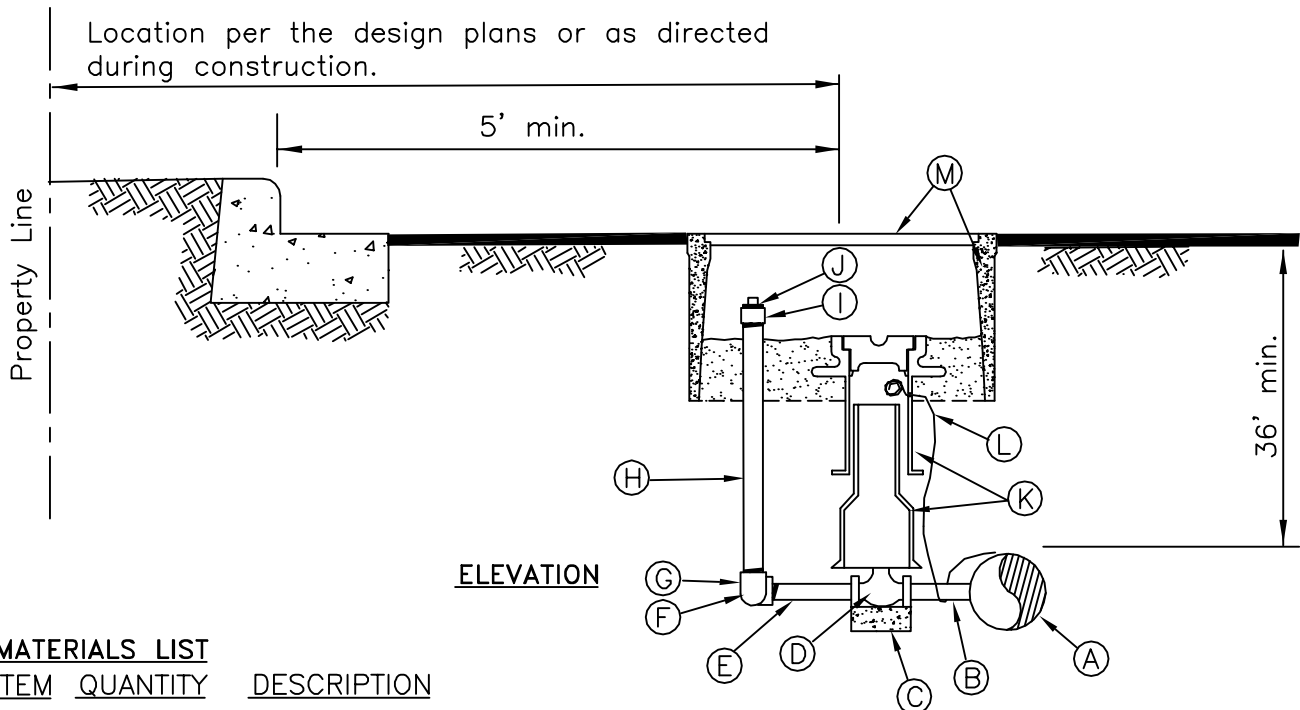
4"x8"x16" concrete block

Blocking per the Specifications and Standard Detail.

In unpaved areas, provide 4" depth cement concrete or asphalt, 1' all around.



PLAN



ELEVATION

MATERIALS LIST

ITEM	QUANTITY	DESCRIPTION
(A)	1	Water Main Tee, M.J.XM.J. with 2" IPS tap and M.J. plug.
(B)	1	2"x6" brass nipple.
(C)	1	4"x8"x16" concrete block.
(D)	1	2" ball valve, FIPxFIP, Ford #B11-777 with 2" operating nut, Ford #QT-67.
(E)	1	2"x6" galvanized iron pipe nipple.
(F)	2	2" 90° galvanized elbow, FIPxFIP.
(G)	1	2" galvanized iron pipe close nipple between elbows.
(H)	1	2" galvanized iron pipe, length to fit.
(I)	1	2" galvanized coupling, FIPxFIP.
(J)	1	2" PVC Plug.
(K)	1	Two-Piece cast iron valve box per the Specifications and Standard Detail.
(L)	1	Locator wire: 14 guage copper, continuous, solid core, neoprene coated per the Specifications. Continue with Mainline.
(M)	1	Meter Box and Cover: Brooks #65 box and Brooks #65-TF cover.

2" BLOW-OFF ASSEMBLY

NOT TO SCALE

Detail Approvals
 Engineer GSM
 Manager DPK

NORTHSHORE UTILITY DISTRICT
STANDARD WATER DETAILS

10

August 2011
 W-10(BlowOff).dwg