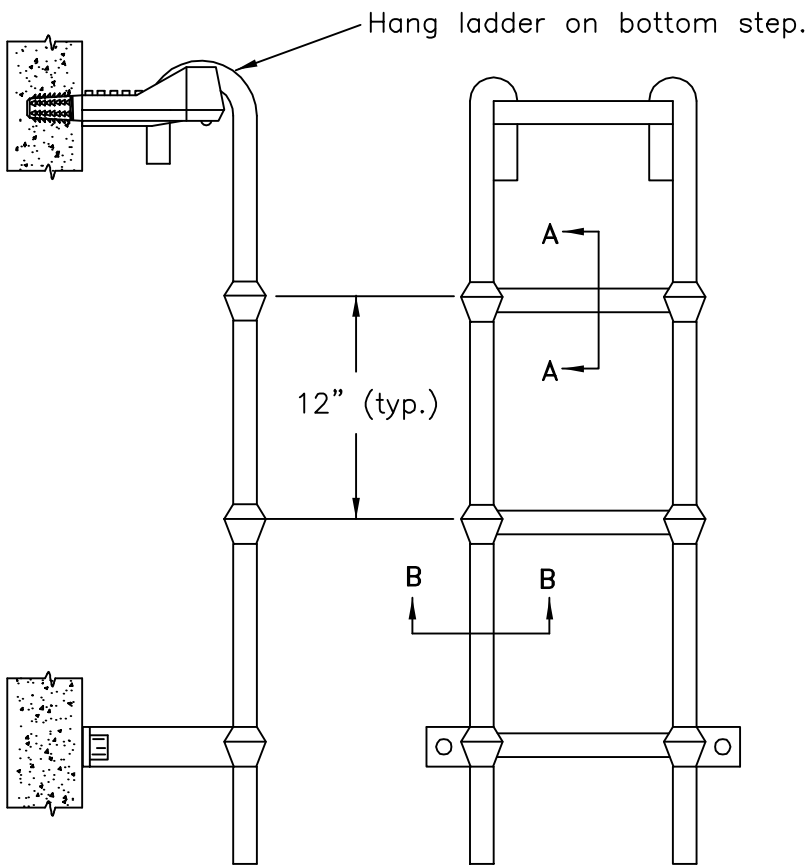
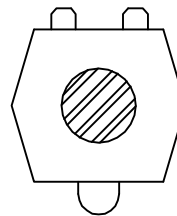


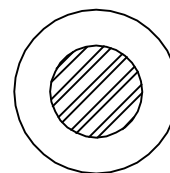
STEP



HANGING LADDER



Section A



Section B

Notes :

Steps to be Lane #P-14850 or District approved equal.

Fasten ladder to MH structure with stainless steel lag screws into lead anchors, or set ladder base into MH shelf prior to curing.

MANHOLE STEPS AND LADDER

NOT TO SCALE

Detail Approvals
 Engineer GSM
 Manager DPK

**NORTHSHORE UTILITY DISTRICT
 STANDARD SEWER DETAILS**

6

August 2011
 S6(STEPSLADDER).DWG