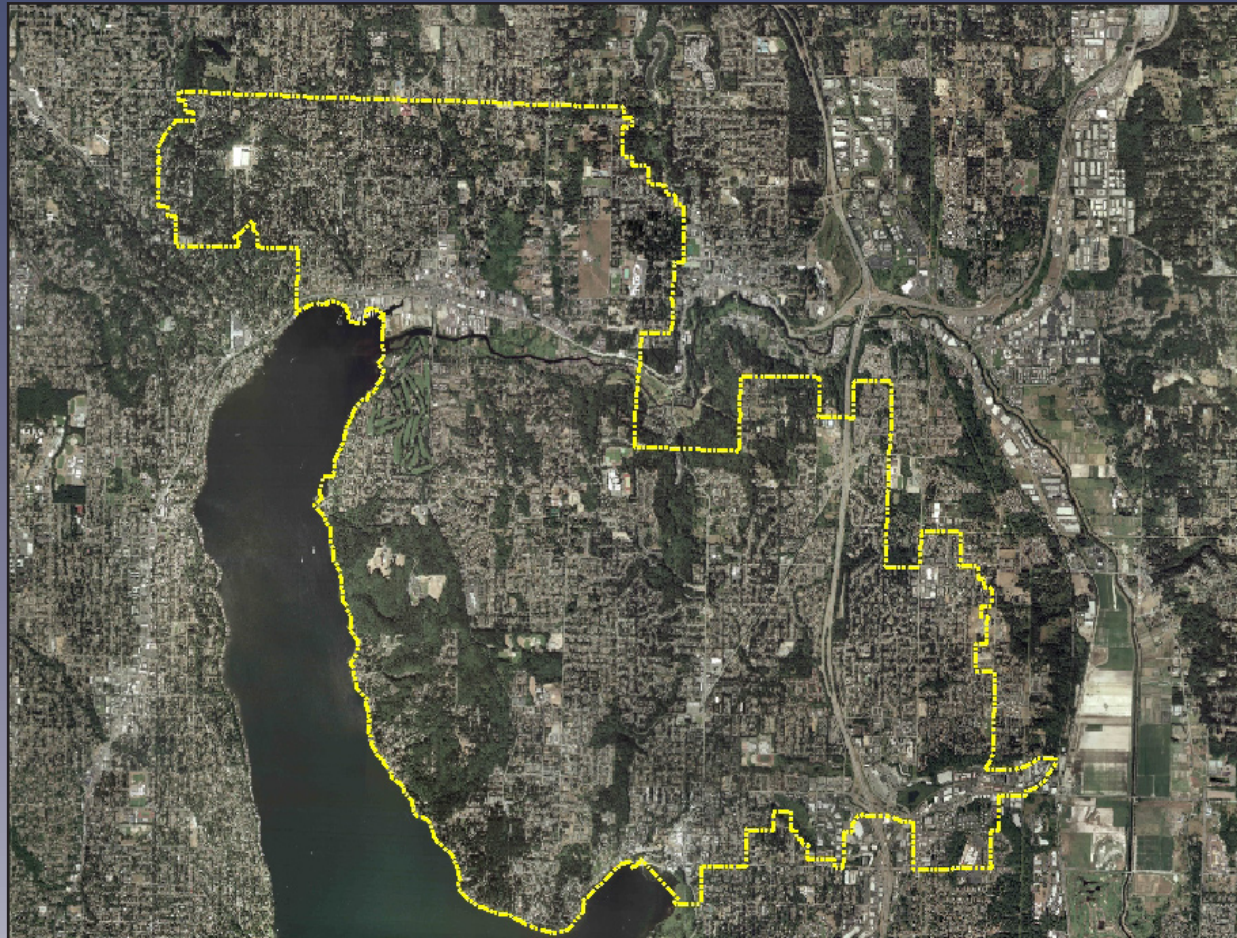


# NORTHSHORE UTILITY DISTRICT

KING COUNTY, WASHINGTON

## WATER SYSTEM PLAN



**FINAL**

March 2009



**Gray & Osborne, Inc.**  
CONSULTING ENGINEERS

**NORTHSHORE UTILITY DISTRICT**  
**KING COUNTY** **WASHINGTON**



**WATER SYSTEM PLAN**

**G&O #06401**  
**MARCH 2009**



**Gray & Osborne, Inc.**

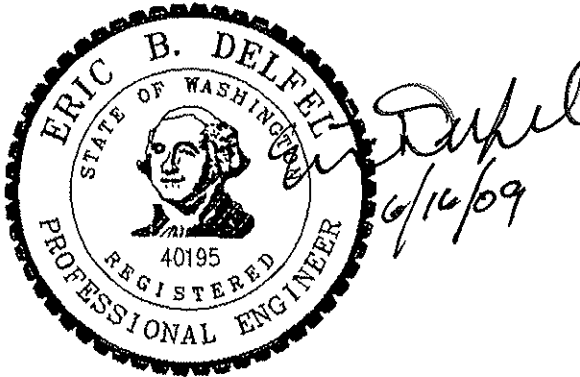
CONSULTING ENGINEERS

701 DEXTER AVENUE NORTH SUITE 200  
SEATTLE, WASHINGTON 98109 • (206) 284-0860

**NORTHSHORE UTILITY DISTRICT**  
KING COUNTY WASHINGTON



**WATER SYSTEM PLAN**



**G&O #06401**  
**MARCH 2009**



**Gray & Osborne, Inc.**

CONSULTING ENGINEERS

701 DEXTER AVENUE NORTH SUITE 200  
SEATTLE, WASHINGTON 98109 • (206) 284-0860

---

## TABLE OF CONTENTS

---

### EXECUTIVE SUMMARY

---

<b>Introduction</b>	<b>E-1</b>
<b>Study Area and Planning Criteria</b>	<b>E-1</b>
<b>Existing System</b>	<b>E-2</b>
<b>Water Use Characterization and Forecasting</b>	<b>E-3</b>
<b>Water System Hydraulic Model</b>	<b>E-4</b>
<b>Operation and Maintenance Program</b>	<b>E-4</b>
<b>System Analysis</b>	<b>E-5</b>
<b>Conservation Program</b>	<b>E-5</b>
<b>Capital Improvement Program</b>	<b>E-5</b>
<b>Finance</b>	<b>E-7</b>

### CHAPTER 1 – INTRODUCTION

---

<b>Introduction</b>	<b>1-1</b>
<b>Purpose</b>	<b>1-1</b>
<b>Plan Summary</b>	<b>1-1</b>
<b>History of the District</b>	<b>1-2</b>
<b>Organization</b>	<b>1-4</b>
<b>List of Abbreviations</b>	<b>1-4</b>
<b>Glossary of Terms</b>	<b>1-6</b>

### CHAPTER 2 – REGULATORY REQUIREMENTS

---

<b>Introduction</b>	<b>2-1</b>
<b>Legislation, Regulations, and Permits</b>	<b>2-1</b>
Washington Administrative Code	2-1
King County Code	2-1
Endangered Species Act	2-1
Federal Clean Water Act	2-2
Floodplain Development Permit	2-2
Growth Management Act	2-2
Hydraulic Project Approval	2-3
Local Permits	2-4
Municipal Water Law	2-4
National Environmental Policy Act	2-4
Reclaimed Water Regulations and Standards	2-5
Safe Drinking Water Act	2-5
Shoreline Management Act Permit	2-5
State Environmental Policy Act	2-5
Water Rights	2-6
Water Right Claim	2-6

Water Right Permit	2-6
Water Right Certificate	2-6
<b>Regulatory Agencies</b>	<b>2-7</b>
United States Environmental Protection Agency	2-7
United States Fish and Wildlife Service	2-7
National Marine Fisheries Services	2-7
United States Army Corps of Engineers	2-7
Washington State Department of Health	2-8
Washington State Department of Ecology	2-8
Washington State Department of Fish and Wildlife	2-8
Local Health Departments	2-8
City and County Planning Policies	2-8
District Policies	2-9
<b>Design, Construction, Operation, and Maintenance Standards</b>	<b>2-10</b>
Minimum Department of Health Design Standards	2-10
Level of Service	2-11
Minimum Pipe Sizes	2-11
Storage	2-11
Source	2-13
Fire Flow	2-13
Construction Standards	2-13
District Design Standards	2-13
<b>Water Quality Standards</b>	<b>2-13</b>
Existing Drinking Water Standards	2-14
Bacteriological	2-14
Residual Disinfectant	2-15
Consumer Confidence Reports	2-15
IOCs, VOCs and SOCs	2-15
Arsenic Rule	2-16
Lead and Copper	2-16
Radionuclide Rule	2-16
Disinfectants/Disinfection Byproducts	2-16
Surface Water Treatment Rule	2-17
Interim Enhanced Surface Water Treatment Rule	2-18
Long-Term 1 Enhanced Surface Water Treatment Rule	2-18
Long-Term 2 Enhanced Surface Water Treatment Rule	2-18
Unregulated Contaminant Monitoring Rule	2-18
Anticipated Future Drinking Water Standards	2-19
Sulfate Rule	2-19
Radon	2-20
Aldicarb Rule	2-20
Groundwater Rule	2-20

## **CHAPTER 3 – PLANNING CRITERIA AND SERVICE POLICIES**

---

<b>Introduction</b>	<b>3-1</b>
<b>Growth Management</b>	<b>3-1</b>
<b>Service Area</b>	<b>3-1</b>
Retail Service Area	3-2
Retail Service Area by Agreement	3-2
Customer Service Policies	3-3
Water Service and Connections	3-3
Timelines, Extensions, and Dispute Resolution	3-4
Satellite System Management	3-5
Physical Environment	3-5
Topography	3-5
Groundwater	3-6
Climate	3-6
Surface Water	3-6
Site-Sensitive Areas	3-7
Geology	3-8
Soils	3-9
Flora and Fauna	3-9
Endangered Species	3-9
<b>Land Use Planning</b>	<b>3-10</b>
<b>Wastewater System</b>	<b>3-12</b>
<b>Intergovernmental Coordination</b>	<b>3-12</b>
Alderwood Water & Wastewater District	3-13
City of Bothell	3-13
City of Kenmore	3-13
King County	3-14
City of Kirkland	3-14
Lake Forest Park Water District	3-14
City of Lake Forest Park	3-15
Seattle Public Utilities	3-15
Shoreline Water District	3-15
Snohomish River Regional Water Authority	3-16
City of Woodinville	3-16
Woodinville Water District	3-16
<b>Related Planning Documents</b>	<b>3-16</b>
Comprehensive Plans	3-17
District Water System Planning Documents	3-17
Other District Plans and Reports	3-17
<b>Regional Conservation Programs</b>	<b>3-17</b>
<b>Planning Period</b>	<b>3-18</b>
<b>Population</b>	<b>3-18</b>
Current and Projected Water Service Area Population	3-18
Water Service Area Buildout Population	3-20

## **CHAPTER 4 – EXISTING WATER SYSTEM COMPONENTS**

---

<b>Introduction</b>	<b>4-1</b>
<b>Source of Supply</b>	<b>4-1</b>
Tolt River	4-1
Cedar River	4-2
Water Rights	4-2
SPU Water Rights	4-2
Snohomish River Regional Water Authority	4-2
District Surface Water Application	4-2
Water Treatment	4-3
Tolt Treatment Facility	4-3
Cedar Treatment Facility	4-3
Supply Pipelines	4-3
Master Meters	4-3
<b>Regional Water Resources Planning</b>	<b>4-4</b>
SPU Supply Contract	4-5
Snohomish River Regional Water Authority	4-5
Central Puget Sound Water Supply Forum	4-6
Groundwater Development	4-6
Reclaimed Water	4-7
Cascade Water Alliance	4-8
CWA/King County Water Supply Planning Process	4-8
<b>Existing Water System Facilities</b>	<b>4-9</b>
Storage Facilities	4-9
Inglemoor Tank Farm	4-9
Kingsgate Standpipe	4-9
Norway Hill Reservoir	4-10
Lake Forest Park Reservoir	4-10
Westhill Standpipe	4-10
Transmission and Distribution Facilities	4-11
Water Mains	4-11
Deactivated Water Mains	4-14
Pressure Zones	4-14
Pressure-Reducing Valve Stations	4-14
Booster Stations	4-16
Interties	4-17
Telemetry and Control	4-18
SCADA System	4-18

## **CHAPTER 5 – WATER USE CHARACTERIZATION AND FORECASTING**

---

<b>Introduction</b>	<b>5-1</b>
<b>Water Use Characterization</b>	<b>5-1</b>
Water Service Connections	5-1
Service Connections by Customer Class	5-1
Service Connections by Municipality within District	5-2

Water Use	5-3
Historical Annual Master Meter Flow	5-3
Peak Season and Peak Month Water Demand	5-4
Maximum Day Water Demand	5-5
Peak Hour Water Demand	5-6
Consumption History	5-8
Lost and Unaccounted for Water	5-10
Equivalent Residential Units	5-11
<b>Water Use Forecasting</b>	<b>5-12</b>
Projected Equivalent Residential Units (ERUs)	5-13
Projected Average Day Demand	5-14
Projected Peak Demands	5-15

## **CHAPTER 6 – WATER SYSTEM HYDRAULIC ANALYSIS**

---

<b>Introduction</b>	<b>6-1</b>
<b>Hydraulic Modeling Program</b>	<b>6-1</b>
<b>Hydraulic Model Development</b>	<b>6-2</b>
Model Layout and Construction	6-2
Water Supply	6-2
Reservoirs and Standpipes	6-3
Automatic Control Valves	6-3
Booster Stations	6-3
System Demands	6-4
Existing System	6-4
Future Growth	6-4
Model Calibration	6-4
<b>Modeled Scenarios and Results</b>	<b>6-6</b>
Peak Hour Analysis	6-6
Fire Flow Analysis	6-7
Additional Modeling Analyses	6-10
Sammamish River Water Main Crossing	6-10
Hydraulic Capacity Analysis	6-10
Reservoir Contamination Hydraulic Modeling	6-11
Evergreen Hospital Hydraulic Modeling Analysis	6-11
<b>Summary of Hydraulic Capacities and Deficiencies</b>	<b>6-11</b>

## **CHAPTER 7 – SYSTEM ANALYSIS**

---

<b>Introduction</b>	<b>7-1</b>
<b>Water Quality Analysis</b>	<b>7-1</b>
Bacteriological	7-1
Residual Disinfectant	7-2
Disinfection Byproducts	7-2
Lead and Copper	7-2
Water Quality Reporting	7-3
<b>Water Rights Analysis</b>	<b>7-3</b>

<b>Facility Analysis</b>	<b>7-3</b>
Source of Supply	7-3
Source Reliability	7-3
Alternate Sources of Supply	7-4
Physical Condition of Master Meters	7-4
Source of Supply Analysis	7-4
Storage Analysis	7-5
Physical Condition	7-5
Storage Area Demand Allocation	7-5
Storage Requirements	7-6
Storage Capacity Analysis Summary	7-11
Booster Stations	7-13
Lake Forest Park	7-13
Inglemoor Booster Station	7-14
Norway Hill	7-15
Summary of Booster Station Capacity Analysis	7-16
Inglemoor Transmission Main	7-16
Distribution	7-17
<b>Summary of System Deficiencies</b>	<b>7-18</b>
Storage Deficiencies	7-18
Booster Stations	7-18
Transmission	7-18
Distribution	7-19

## **CHAPTER 8 – OPERATION AND MAINTENANCE PROGRAM**

<b>Introduction</b>	<b>8-1</b>
<b>Water System Organization</b>	<b>8-1</b>
<b>Operator Certification</b>	<b>8-2</b>
<b>System Operation and Control</b>	<b>8-3</b>
SCADA System	8-3
<b>Facility Performance Evaluation</b>	<b>8-4</b>
<b>Preventive Maintenance</b>	<b>8-4</b>
SCADA System	8-5
Master Meters	8-5
Reservoir	8-5
Booster Stations	8-6
Interties	8-6
Distribution System	8-6
<b>Cross Connection Control Program</b>	<b>8-6</b>
<b>Emergency Response Program</b>	<b>8-6</b>
<b>Safety Procedures</b>	<b>8-7</b>
<b>Maintenance Record System</b>	<b>8-8</b>
<b>Staffing Levels</b>	<b>8-8</b>
Water Quality Coordinator	8-8
Dispatch	8-8

Water Supervisor	8-8
Utility Lead Water Service	8-9
Water Service Group Crew	8-9
Utility Lead Water Metering	8-9
Water Metering Group Crew	8-9
Utility Locator	8-9
<b>CHAPTER 9 – CONSERVATION PROGRAM</b>	
<hr/>	
<b>Introduction</b>	<b>9-1</b>
<b>Conservation Planning Requirements</b>	<b>9-1</b>
Municipal Water Law	9-1
<b>Water Used Data Collection and Reporting</b>	<b>9-2</b>
Data Collection	9-2
Data Reporting	9-3
<b>District Conservation Program</b>	<b>9-4</b>
Historical Conservation Efforts	9-4
Per Capita Water Use Reduction	9-4
Lost and Unaccounted for Water Reduction	9-5
Objectives	9-6
Regional Programs	9-6
SPU One Percent Conservation Program	9-6
KCDNR Brightwater Wastewater Treatment Facility	9-6
Selection of Conservation Measures	9-7
Source Meters	9-7
Service Meters	9-7
Leak Detection	9-7
Program Promotion	9-7
Water Saving Devices	9-8
Conservation Pricing	9-8
Consumption History	9-8
Water Reuse	9-8
Target Water Savings	9-8
<b>Potential for Water Reuse</b>	<b>9-9</b>
Introduction	9-9
Permitted Uses of Reclaimed Municipal Wastewater	9-10
Groundwater Recharge	9-11
Streamflow Augmentation	9-12
Other Uses	9-12
Reuse Area Requirements	9-12
KCDNR Brightwater WWTF and Reclaimed Water Plan	9-13
Potential for Irrigation Water Reuse	9-14
Potential for Industrial Water Reuse	9-15
Jetting of Sanitary Sewer Lines	9-16
Feasibility of Reclaimed Water	9-16

**CHAPTER 10 – CAPITAL IMPROVEMENTS**

---

<b>Introduction</b>	<b>10-1</b>
<b>Miscellaneous Projects (M)</b>	<b>10-2</b>
<b>PRV Station (P)</b>	<b>10-4</b>
<b>Seismic Upgrade Program (S)</b>	<b>10-4</b>
<b>Extension Projects (E)</b>	<b>10-6</b>
<b>Repair and Replacement Projects (R)</b>	<b>10-7</b>
<b>Summary</b>	<b>10-9</b>

**CHAPTER 11 – FINANCE**

---

<b>Introduction</b>	<b>11-1</b>
<b>Existing Service Rates</b>	<b>11-1</b>
<b>Existing Service Connection Charges</b>	<b>11-3</b>
<b>Financial Status of the Water and Wastewater Utilities</b>	<b>11-4</b>
<b>Capital Improvement Project Funding</b>	<b>11-7</b>
<b>Rate Impacts</b>	<b>11-7</b>

## LIST OF TABLES

<u>No.</u>	<u>Table</u>	<u>Page</u>
E-1	Project Water Service Area Population and Employment .....	E-2
E-2	2005 Water System Data .....	E-3
E-3	Water Service Area Peak Demand Projections.....	E-4
E-4	Water Capital Improvement Projects, 2000-2006 .....	E-6
E-5	Ten-Year CIP Summary .....	E-7
1-1	Historical District Timeline .....	1-3
2-1	Water System Policies .....	2-9
2-2	Other District Policies.....	2-10
2-3	Summary of Existing Drinking Water Requirements.....	2-19
3-1	Priority Anadromous and Resident Fish Presence.....	3-10
3-2	Land Use Designation for the Northshore Utility District.....	3-11
3-3	Water Service Area Land Use Designation .....	3-12
3-4	Projected Water Service Area Population Based on TAZ Projections.....	3-19
3-5	Projected Water Service Area Population and Employment .....	3-20
3-6	Buildout Population for the Water Service Area by Zoning Classification.....	3-21
3-7	Projected Water Service Area Population and Employment .....	3-22
4-1	Existing Master Meter Connections.....	4-4
4-2	Existing Storage Facilities .....	4-11
4-3	Pipe Lengths by Diameter and Type.....	4-13
4-4	Pressure Reducing Valve Stations .....	4-15
4-5	Booster Stations .....	4-17
4-6	Northshore Utility District Interties .....	4-18
4-7	SCADA System Control .....	4-19
5-1	Water Service Connections by Customer Class (2000-2005).....	5-2
5-2	Percent of Water Service Connections per Municipal Entity (2005) .....	5-3
5-3	Historical Master Meter Flow .....	5-3
5-4	Historical Per Capita Master Meter Flow .....	5-4
5-5	Historical Peak Season and Peak Month Master Meter Flow.....	5-5
5-6	Historical Maximum Day Demand.....	5-6
5-7	Historical Peak Hour Demand .....	5-7
5-8	Historical Consumption by Customer Class .....	5-9
5-9	Historical Per Capita Water Consumption.....	5-9
5-10	Historical Per Employee Water Consumption.....	5-10
5-11	Lost and Unaccounted for Water .....	5-10
5-12	Historical Equivalent Residential Unit Value.....	5-12
5-13	Historical Equivalent Residential Units by Customer Class.....	5-12
5-14	Water Service Area ERU Projections .....	5-13
5-15	Water Service Area Average Day Demand Projections .....	5-14
5-16	Water Service Area Peak Demand Projections.....	5-15
6-1	Mater Meter Settings and SPU Hydraulic Grade.....	6-3
6-2	Calibration Results.....	6-6

<b><u>No.</u></b>	<b><u>Table</u></b>	<b><u>Page</u></b>
6-3	System Conditions during Peak Hour Analyses .....	6-7
6-4	Minimum System Pressures during Peak Hour Analyses.....	6-7
6-5	System Conditions during Fire Flow Analyses .....	6-8
6-6	Available Fire Flows at High Fire Flow Locations .....	6-9
7-1	Source of Supply Analysis.....	7-4
7-2	Demand Allocation by Storage Area .....	7-6
7-3	Operational Storage .....	7-7
7-4	Equalizing Storage .....	7-8
7-5	Fire Suppression Storage .....	7-9
7-6	Standby Storage .....	7-9
7-7	Dead Storage.....	7-10
7-8	Summary of Available Storage.....	7-11
7-9	2006 Storage Capacity Analysis .....	7-11
7-10	2012 Storage Capacity Analysis .....	7-12
7-11	2026 Storage Capacity Analysis .....	7-12
7-12	Buildout Storage Capacity Analysis .....	7-13
7-13	Summary of Booster Station Capacity Analysis.....	7-16
8-1	District Operator Certification Status .....	8-3
8-2	Facility Performance Evaluation.....	8-4
8-3	Reservoir Preventive Maintenance Schedule.....	8-5
8-4	Emergency Preparedness Tasks and Projects .....	8-7
9-1	Summary of Water Use Data Collection .....	9-2
9-2	Historical Population and Per Capita Water Use.....	9-4
9-3	Historical Population and Per Capita Water Use.....	9-6
9-4	Projected Water Use with Conservation.....	9-9
9-5	Setback Distances for Class A Reclaimed Water in the State of Washington...	9-13
9-6	KCDNR Projected Peak Day Reclaimed Water Demand.....	9-14
9-7	Reclaimed Water System Capacity.....	9-14
9-8	Potential Uses for Reclaimed Water .....	9-15
10-1	Water Main Replacement Program Schedule .....	10-8
10-2	Capital Improvement Plan Summary .....	10-10
11-1	Bimonthly Base Charge by Customer Class.....	11-2
11-2	Bimonthly Usage Rates.....	11-3
11-3	Water and Wastewater Connection Charges.....	11-4
11-4	Fire-Protection Charges .....	11-4
11-5	Summary of Income and Expenses.....	11-6

## LIST OF FIGURES

<u>No.</u>	<u>Table</u>	<u>On or Follows Page</u>
1-1	Location Map .....	1-2
1-2	Aerial Photo .....	1-2
1-3	District System .....	1-2
3-1	District Boundary .....	3-2
3-2	Topography .....	3-2
3-3	Sensitive Areas .....	3-4
3-4	Floodplain Map .....	3-4
3-5	Soils .....	3-6
3-6	Future Land Use .....	3-8
3-7	Wastewater System .....	3-10
3-8	Municipal Boundaries .....	3-10
3-9	TAZ .....	3-14
4-1	SPU System .....	4-4
4-2	Pressure Zone Map .....	4-12
4-3	3-D Schematic .....	4-12
4-4	Tolt HGL Profile .....	4-12
4-5	SCADA Screen .....	4-17
5-1	Water Demand Diurnal Curve .....	5-8
7-1	Storage Analysis .....	7-12
8-1	Organizational Chart .....	8-2
9-1	Water Use .....	9-5
9-2	Reclaimed Water Areas .....	9-10
9-3	Reclaimed Water Pipe Lines .....	9-10

## **LIST OF APPENDICES**

- Appendix A – Water Facility Inventory (WFI)  
Water System Plan Checklist  
Municipal Water Law Attachments 2, 5, and 9
- Appendix B – Comment Letters
- Appendix C – Municipal Water Law Guidance Documents
- Appendix D – State Environmental Policy Act (SEPA) Checklist
- Appendix E – District Design Standards
- Appendix F – Consumer Confidence Reports
- Appendix G – Seattle Public Utilities (SPU) Water Supply Contract
- Appendix H – Water Rights  
Water Right Applications
- Appendix I – Coliform Monitoring Plan
- Appendix J – Project Cost Estimates
- Appendix K – Rate Resolution and Financial Information
- Appendix L – Funding Sources
- Appendix M – Interlocal Agreements
- Appendix N – Cross Connection Control Program
- Appendix O – Comprehensive Emergency Response Plan Summary